

### CLASS



- |   |  |
|---|--|
| <b>60x120 cm</b> - 24"x47"<br>125235 ■ 117    | <b>30x60 cm</b> - 12"x24"<br>125273 ■ 83   |
| <b>80x80 cm</b> - 31.5"x31.5"<br>125279 ■ 117 | <b>*30x30 cm</b> - 12"x12"<br>125453 ■ 136 |
| <b>60x60 cm</b> - 24"x24"<br>125244 ■ 100     | <b>*15x15 cm</b> - 6"x6"<br>125568 ■ 167   |

### CONCEPT



- |   |  |
|---|--|
| <b>60x120 cm</b> - 24"x47"<br>125238 ■ 117    | <b>30x60 cm</b> - 12"x24"<br>125258 ■ 83   |
| <b>80x80 cm</b> - 31.5"x31.5"<br>125282 ■ 117 | <b>*30x30 cm</b> - 12"x12"<br>125567 ■ 136 |
| <b>60x60 cm</b> - 24"x24"<br>125254 ■ 100     | <b>*15x15 cm</b> - 6"x6"<br>125572 ■ 167   |

### URBAN



- |   |  |
|---|--|
| <b>60x120 cm</b> - 24"x47"<br>125237 ■ 117    | <b>30x60 cm</b> - 12"x24"<br>125274 ■ 83   |
| <b>80x80 cm</b> - 31.5"x31.5"<br>125281 ■ 117 | <b>*30x30 cm</b> - 12"x12"<br>125454 ■ 136 |
| <b>60x60 cm</b> - 24"x24"<br>125253 ■ 100     | <b>*15x15 cm</b> - 6"x6"<br>125569 ■ 167   |

\* Minimun order 2 pallet / Ordine minimo di 2 palette

### WIRE



- |   |
|---|
| <b>60x120 cm</b> - 24"x47"<br>125236 ■ 117    |
| <b>80x80 cm</b> - 31.5"x31.5"<br>125280 ■ 117 |
| <b>60x60 cm</b> - 24"x24"<br>125252 ■ 100     |

\* Minimun order 2 pallet / Ordine minimo di 2 palette

### TOUCH



60x120 cm - 24"x47"  
125234 ■ 117

80x80 cm - 31.5"x31.5"  
125278 ■ 117

60x60 cm - 24"x24"  
125243 ■ 100

### DESIGN



60x120 cm - 24"x47"  
125239 ■ 136

60x60 cm - 24"x24"  
125255 ■ 119

### MASTER



60x120 cm - 24"x47"  
125233 ■ 117

80x80 cm - 31.5"x31.5"  
125277 ■ 117

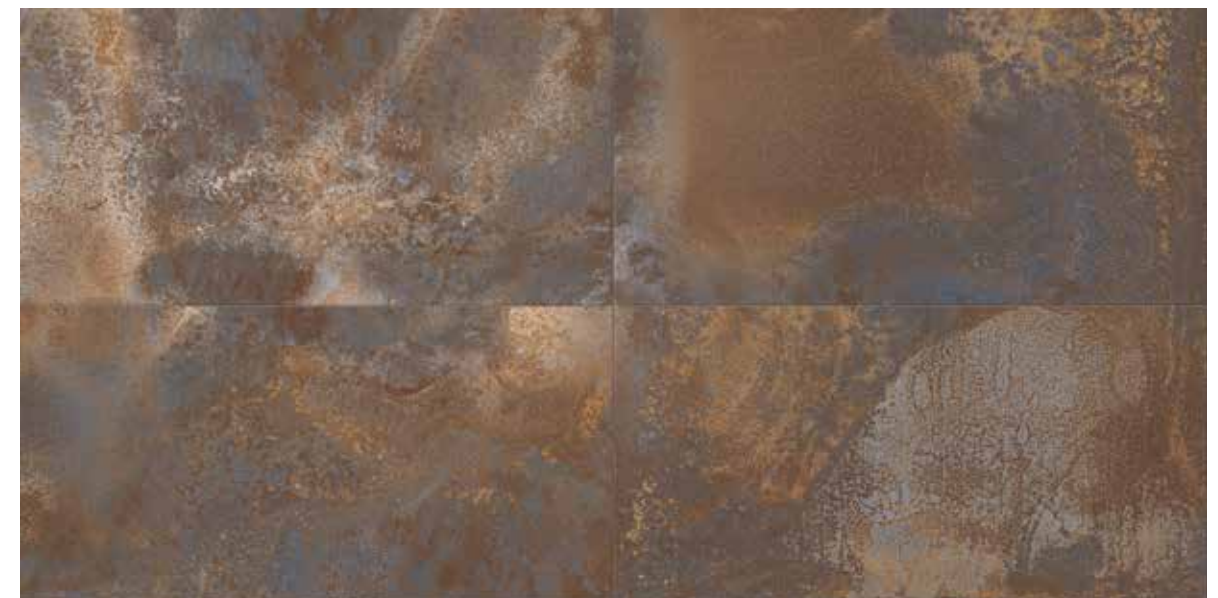
60x60 cm - 24"x24"  
125242 ■ 100

30x60 cm - 12"x24"  
125275 ■ 83

\*30x30 cm - 12"x12"  
125456 ■ 136

\*15x15 cm - 6"x6"  
125571 ■ 167

### ART



60x120 cm - 24"x47"  
125240 ■ 136

60x60 cm - 24"x24"  
125256 ■ 119

\* Minimum order 2 pallet / Ordine minimo di 2 palette

## ELITE

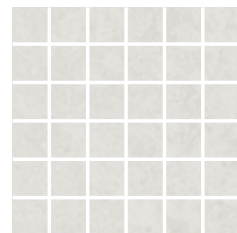


- 60x120 cm - 24"x47"  
125232 ■ 117
- 80x80 cm - 31.5"x31.5"  
125276 ■ 117
- 60x60 cm - 24"x24"  
125241 ■ 100
- 30x60 cm - 12"x24"  
125257 ■ 83
- \*30x30 cm - 12"x12"  
125455 ■ 136
- \*15x15 cm - 6"x6"  
125570 ■ 167

\* Minimun order 2 pallet / Ordine minimo di 2 palette

## MOSAICS - MOSAICI

Mosaico su rete



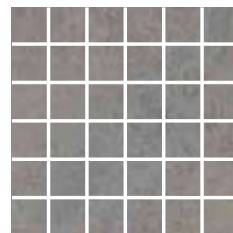
4,7x4,7 cm - 1.8"x1.8"  
30x30 cm - 12"x12"  
CLASS  
125446 Nat. Rett.  
■ 189

Mosaico su rete



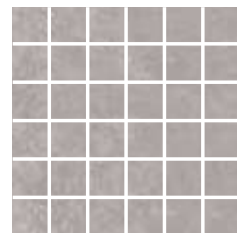
4,7x4,7 cm - 1.8"x1.8"  
30x30 cm - 12"x12"  
CONCEPT  
125447 Nat. Rett.  
■ 189

Mosaico su rete



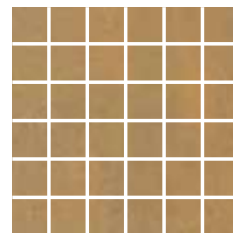
4,7x4,7 cm - 1.8"x1.8"  
30x30 cm - 12"x12"  
TOUCH  
125449 Nat. Rett.  
■ 189

Mosaico su rete



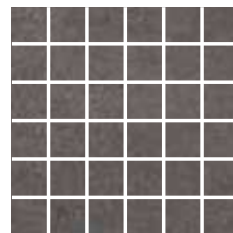
4,7x4,7 cm - 1.8"x1.8"  
30x30 cm - 12"x12"  
URBAN  
125448 Nat. Rett.  
■ 189

Mosaico su rete



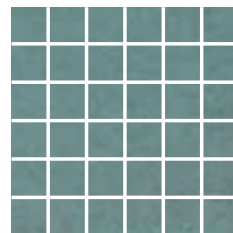
4,7x4,7 cm - 1.8"x1.8"  
30x30 cm - 12"x12"  
WIRE  
125450 Nat. Rett.  
■ 189

Mosaico su rete



4,7x4,7 cm - 1.8"x1.8"  
30x30 cm - 12"x12"  
MASTER  
125452 Nat. Rett.  
■ 189

Mosaico su rete



4,7x4,7 cm - 1.8"x1.8"  
30x30 cm - 12"x12"  
ELITE  
125451 Nat. Rett.  
■ 189

## FINE PORCELAIN STONEWARE

GRES FINE PORCELLANATO

## MOLD



20x30 cm - 8"x12"  
CLASS  
125690 Nat. Rett.  
● 56



20x30 cm - 8"x12"  
CONCEPT  
125689 Nat. Rett.  
● 56

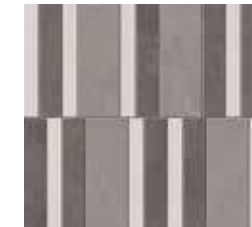


20x30 cm - 8"x12"  
ART  
125691 Nat. Rett.  
● 56



20x30 cm - 8"x12"  
ELITE  
125688 Nat. Rett.  
● 56

## BARS



30x32 cm - 12"x12.6"  
COLD  
125687 Nat. Rett.  
● 61



30x32 cm - 12"x12.6"  
WARM  
121686 Nat. Rett.  
● 61

## BUILD



36x36 cm - 14.2"x14.2"  
COLD  
125685 Nat. Rett.  
● 98



36x36 cm - 14.2"x14.2"  
WARM  
125684 Nat. Rett.  
● 98

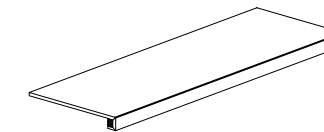
## Special Pieces - Pezzi Speciali



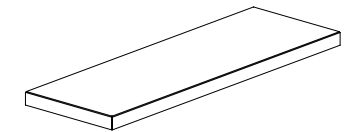
5,4x60 cm - 2"x24"  
Battiscopa  
Nat. Rett.  
● 13



30x60 cm - 12"x24"  
Gradino  
Nat. Rett.  
● 61



33x120 cm - 13"x47"  
Gradone Costa Retta  
Nat. Rett.  
● 210



33x120 cm - 13"x47"  
Gradone Angolare Costa Retta DX/SX  
Nat. Rett.  
● 223

## Slip Resistant - Scivolosità

	STANDARD NORMA	NATURAL SURFACE SUPERFICIE NATURALE
	B.C.R.A. (D.M.I. n. 236 μ>0,4)	> 0,40
	ANSI A137.1 (DCOF WET >0,42)	> 0,42
	DIN 51130	R10
	DIN 51097	A + B A + B MOSAICO 4,7x4,7
	BS 7976 PTV ≥ 36 "Low slip risk"	≥ 36 Dry ≥ 36 Wet
	AS 4586	Class P3

For specific certificates and data, contact Fincibec spa - Per i certificati specifici, e valori puntuali, contattare Fincibec spa