

continuità
di massa,
superficie
e bordo /
body and
surface
continuity/

/contacts

LAMINAM[®]

Headquarters

Laminam S.p.A
via Ghiarola Nuova 258
41042 Fiorano Modenese
(Modena) / Italy
Tel +39 0536 1844200
www.laminam.it

Production plants

Laminam S.p.A
via Ghiarola Nuova 258
41042 Fiorano Modenese
(Modena) / Italy
Tel +39 0536 1844200

Laminam S.p.A
Via Primo Brindani 1
43043, Borgo Val di Taro
(Parma) / Italy
Tel +39 0525 97864

Showrooms

Fiorano Modenese
via Ghiarola Nuova 258
41042 Fiorano Modenese
(Modena) / Italy
Tel +39 0536 1844200

Milan
Via Verdi, 5
20121, Milano / Italy
Tel +39 02 89092496

LAMINAM[®]
Poland

Showroom

Warsaw
Euro Centrum
Aleje Jerozolimskie 134
02-305, Warszawa / Poland
Tel +48 22 2026100

LAMINAM[®]
Usa

Headquarters

Chicago, IL, USA
pg.mazzetta@laminam.it



Cod. LAMC001647
Campionatura gratuita di
modico valore ai sensi del
DPR 633/72 e succ. modifiche art.2
Copyright 2019 Laminam S.p.A.

www.laminam.it

LAMINAM[®]
Rus

Headquarters

Laminam Rus LLC
Kaluzhskaya oblast
Borovskiy raion
Dobrinno village
10 Vostochniy proezd
building1 / Russian Federation
Tel +7 495 274 03 00

Production plant

Laminam Rus LLC
Kaluzhskaya oblast
Borovskiy raion
Dobrinno village
10 Vostochniy proezd
building1 / Russian Federation
Tel +7 495 274 03 00

Showroom

Moscow
Federation Tower,
Prestnenskaya nab.,
Build. 12, floor 28, office 18
Moscow / Russian Federation
Tel +7 499 557 00 00

LAMINAM[®]
China

Headquarters

Laminam Cn Ltd
Room 315 No.3721 Hongmei Rd
Changning, Shanghai / China
Tel +86 021 52988283

Showroom

Shanghai
Unit 1D1011 No.200 Wending Rd
Xuhui, Shanghai / China
Tel +86 021 52988283

LAMINAM[®]
Canada

Headquarters

Toronto, ON, Canada
pg.mazzetta@laminam.it

IN-SIDE is born!
The latest Laminam Technology

Continuità di massa, superficie e bordo /
Body and surface continuity /

LAMINAM

materie
prime
naturali a
granulometria
variabile/
natural
raw materials
with variable
grain size



The latest Laminam Technology

Nasce IN-SIDE, la prima collezione di lastre ceramiche con continuità materica tra massa, superficie e bordo.

IN-SIDE si basa sulla miscelazione di materie prime naturali a granulometria variabile da cui si ottiene un mélange materico tipico delle pietre naturali. Oltre alle elevate prestazioni tecniche, già superiori ai materiali più comunemente impiegati per i piani orizzontali, il nuovo prodotto IN-SIDE risponde ulteriormente alle richieste estetiche del mondo dell'arredo, grazie all'omogeneità estetica tra massa, superficie e bordo, anche dopo le lavorazioni necessarie per ottenere il prodotto finito (taglio, foratura, bordatura). /

Introducing IN-SIDE, the first series of ceramic slabs offering material continuity between body and surface.

IN-SIDE is based on the mixture of natural raw materials with variable grain size which results in a textured blend, typical of natural stones. In addition to the superior technical performance levels, which are far above those of materials more commonly used for horizontal surfaces, the new IN-SIDE product further accommodates the styling requirements of the world of furnishings, thanks to the uniform aesthetic styling between body and surface, even after the necessary processing to achieve the finished product (cutting, drilling, chamfering). /

watch the video



IN-SIDE / Pietra Piasentina Taupe

Estratta dalla terra, tecnologicamente scolpita.

Materie prime naturali, purificate dall'acqua, rinascono in forma di una superficie durevole, estesa fino a 1620x3240mm con l'aspetto della vera pietra naturale. /

Extracted from the earth, technologically sculpted.

Natural raw materials, purified by water, are given a new lease of life in the form of a hard-wearing surface, which stretches up to 1620x3240mm (63.7"x127.5") with the appearance of genuine natural stone. /

Pietra Piasentina Taupe / Pietra Piasentina Taupe Fiammato / Pietra Piasentina Taupe Lucidato

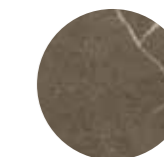
Full Size 1620x3240 mm (63.7"x127.5") Laminam 5 / Laminam 12+ / Laminam 20

1620x3240 mm (63.7"x127.5") Laminam 5+

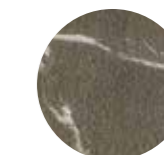
3 Facce fornite in modo "random" / 3 Available Faces Supplied Randomly



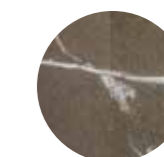
3 finiture / finishes



Naturale



Fiammata



Lucidata

Pietra Piasentina Taupe Fiammato

1000x3000 mm (39.4"x118.1") Laminam 5

6 Facce fornite in modo "random" / 6 Available Faces Supplied Randomly



1 finitura / finish



Fiammata

Availability

	Full Size				
	1000x3000 39.4"x118.1"	1620x3240 63.7"x127.5"	1620x3240 • 63.7"x127.5"		
	5	5+	5	12+	20
Pietra Piasentina Taupe	-	LAMF008971	LAMF008970	LAMF008974	LAMF008981
Pietra Piasentina Taupe Fiammato	LAMF009041	LAMF008973	LAMF008972	LAMF008975	LAMF008976
Pietra Piasentina Taupe Lucidato	-	LAMFF00881	LAMFF00880	LAMFF00882	LAMFF00884

• Lastra formato "uscita forno" quindi non rifilata. / Untrimmed end product.

I toni e le caratteristiche delle immagini sono da considerarsi indicativi / Picture colours and features have to be considered indicative