

guide lines



I FILATI DI REX
LE PALLADIANE DI REX
LES BIJOUX DE REX

i filati di rex
P. 2



le palladiane di rex
P. 22



les bijoux de rex
P. 28



spessore/thickness 6 mm - 1/4"

120x280 / 47^{1/4}"x126"

120x240 / 47^{1/4}"x94^{1/2}"

60x120 / 23^{5/8}"x47^{1/4}"

RUBELLI
design

i filati di rex

"i filati di rex" rievoca il senso di artigianalità della secolare arte della seta attraverso grandi lastre ceramiche che si presentano come tessuti seducenti alla vista e gradevoli al tatto, capaci di conservare intatta l'essenza e la preziosità di quelli artigianali.

I motivi decorativi più iconici di Rubelli prendono vita sulla superficie ceramica in un elegante gioco di effetti in rilievo che reinterpretano la texture del tessuto. La collezione propone nove motivi decorativi declinati su grandi lastre Florim in diverse tonalità riconducibili a quelle dei tessuti originali, con grafie ispirate alla natura e all'arte. Si spazia attraverso tre diverse famiglie estetiche: i motivi damascati, i motivi floreali e i motivi geometrici.

"i filati di rex" re-evokes the hand-made feeling of the centuries-old art of silk through large ceramic slabs that resemble fabrics, seductive to look at and alluring to touch, with all the essence and luxury of hand-made textiles. Rubelli's most iconic decorative motifs come to life on the ceramic surface in an elegant interplay of relief effects that reinterpret the texture of the fabric. The collection features nine decorative motifs, featured on Florim large slabs in different colour shades which evoke those of the original fabrics, with patterns inspired by nature and art. Three families of motif are included: damask, floral and geometrical.

La collection « i filati di rex » évoque l'artisanat de l'art séculaire de la soie à travers de grandes dalles en céramique qui se présentent comme des tissus agréables à la vue et au toucher, à même de préserver l'essence et le caractère précieux de ceux artisanaux. Les motifs décoratifs les plus emblématiques de Rubelli prennent vie sur la surface en céramique dans un élégant jeu d'effets en relief qui réinterprètent la texture du tissu. La collection propose neuf motifs décoratifs déclinés sur de grandes dalles Florim dans différentes tonalités évoquant celles des tissus originaux, avec des graphies s'inspirant de la nature et de l'art. Elle embrasse trois différentes familles esthétiques : les motifs damassés, les motifs floraux et les motifs géométriques.

"i filati di rex" erinnert an den Handwerkssinn der jahrhundertealten Seidenkunst und kommt durch große Keramikplatten zur Geltung, die sich dem Auge als verführerische und zudem angenehm weiche Stoffe entpuppen, welche das Wesen und die Kostbarkeit der handwerklich hergestellten Erzeugnisse bewahren. Die Ikonen der Dekormotive von Rubelli erwachen auf der Keramikoberfläche in einem eleganten Spiel von Reliefeffekten, welche die Textur des Stoffes neu interpretieren. Die Kollektion bietet auf große Florim-Platten neun Dekormotive in verschiedenen Farbtönen an, die auf die Originalstoffe zurückgreifen und von Natur und Kunst inspirierte Grafiken aufweisen. Sie erstreckt sich über drei unterschiedliche ästhetische Familien: Damastmuster, Blumenmuster und geometrische Muster.

"i filati di rex" evoca el sentido artesanal del antiguo arte de la seda, a través de grandes losas cerámicas que se presentan como telas, seductoras a la vista y agradables al tacto, capaces de conservar intacta la esencia y la belleza de las losas artesanales. Los motivos decorativos más icónicos de Rubelli cobran vida sobre la superficie cerámica, en un elegante juego de efectos en relieve que reinterpretan la textura de la tela. La colección propone nueve motivos decorativos para grandes losas Florim en diferentes tonalidades, asociadas a las de las telas originales, con grafías inspiradas en la naturaleza y en el arte. La colección incluye tres familias estéticas diferentes: los motivos adamascados, los motivos floreales y los motivos geométricos.

"i filati di rex" воссоздает ощущение ремесленного духа древнего искусства шелкопряжения посредством больших керамических плит, которые представляются как обворожительные ткани на вид и приятные на ощупь, способные сохранить нетронутой сущность и ценность материалов ремесленного производства. Ставшие иконой декоративные мотивы Рубелли оживают на керамической поверхности в элегантной игре рельефных эффектов, интерпретирующих фактуру ткани. Эта коллекция предлагает девять декоративных мотивов, использованных в разнообразных тонах на крупноформатных плитах Florim, напоминающих образцы из ткани с графикой, источником вдохновения для которой послужила природа и искусство. Предлагаются три семейства оформления: мотивы камчатных тканей, цветочные мотивы и геометрические мотивы.



wall: Lady Hamilton vaniglia 120x280 47^{1/4}"x110^{1/4}", esprit de rex neutral brun 120x280 47^{1/4}"x110^{1/4}"
floor: esprit de rex neutral brun 120x120 47^{1/4}"x47^{1/4}"



Lady Hamilton vaniglia

GRES PORCELLANATO DECORATO - DECORATED PORCELAIN TILES
SQUADRATO - SQUARED

| | | | | | |
|--------------|-------|---------|---|--|---|
| 6 mm 1/4" ↑↓ | COLOR | SURFACE | 120x280 47 ^{1/4} "x110 ^{1/4} " | 120x240 47 ^{1/4} "x94 ^{1/2} " | 60x120 23 ^{5/8} "x47 ^{1/4} " |
|--------------|-------|---------|---|--|---|

| | | | | | | |
|------------------------|---|------------------------|-------|--------|--------|--------|
| I FILATI DI REX |  | LADY HAMILTON VANIGLIA | MATTE | 767040 | 767075 | 767110 |
|------------------------|---|------------------------|-------|--------|--------|--------|



Lady Hamilton turchese







Lady Hamilton cipria



Lady Hamilton amaranto

GRES PORCELLANATO DECORATO - DECORATED PORCELAIN TILES
 SQUADRATO - SQUARED

| 6 mm 1/4"  | COLOR | SURFACE | 120x280 | 120x240 | 60x120 | |
|---|---|----------------------|--|---|---|--------|
| | | | 47 ¹ / ₄ "x110 ¹ / ₄ " | 47 ¹ / ₄ "x94 ¹ / ₂ " | 23 ⁵ / ₈ "x47 ¹ / ₄ " | |
|  | LADY HAMILTON TURCHESE | MATTE | 767042 | 767077 | 767114 | |
| I FILATI DI REX |  | LADY HAMILTON CIPRIA | MATTE | 767041 | 767076 | 767113 |
|  | LADY HAMILTON AMARANTO | MATTE | 767043 | 767078 | 767115 | |

i filati di rex



Funny Girl vaniglia

GRES PORCELLANATO DECORATO - DECORATED PORCELAIN TILES
SQUADRATO - SQUARED

| | | | | | |
|--------------|-------|---------|---|--|---|
| 6 mm 1/4" ↑↓ | COLOR | SURFACE | 120x280 47 ^{1/4} "x110 ^{1/4} " | 120x240 47 ^{1/4} "x94 ^{1/2} " | 60x120 23 ^{5/8} "x47 ^{1/4} " |
|--------------|-------|---------|---|--|---|

| | | | | | | |
|------------------------|---|---------------------|-------|--------|--------|--------|
| I FILATI DI REX |  | FUNNY GIRL VANIGLIA | MATTE | 767044 | 767079 | 767116 |
|------------------------|---|---------------------|-------|--------|--------|--------|



Funny Girl turchese


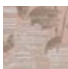
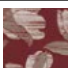


Funny Girl cipria



Funny Girl granata

GRES PORCELLANATO DECORATO - DECORATED PORCELAIN TILES
SQUADRATO - SQUARED

| 6 mm 1/4" ↑↓ | COLOR | SURFACE | 120x280 | 120x240 | 60x120 | |
|---|---|--------------------|--------------------|-------------------|-------------------|--------|
| | | | 47 1/4" x 110 1/4" | 47 1/4" x 94 1/2" | 23 5/8" x 47 1/4" | |
|  | FUNNY GIRL TURCHESE | MATTE | 767046 | 767081 | 767118 | |
| I FILATI DI REX |  | FUNNY GIRL CIPRIA | MATTE | 767045 | 767080 | 767117 |
| |  | FUNNY GIRL GRANATA | MATTE | 767048 | 767083 | 767120 |

i filati di rex



Dorian Gray rugiada

GRES PORCELLANATO DECORATO - DECORATED PORCELAIN TILES
SQUADRATO - SQUARED

| | | | | | |
|--------------|-------|---------|---|--|---|
| 6 mm 1/4" ↑↓ | COLOR | SURFACE | 120x280 47 ^{1/4} "x110 ^{1/4} " | 120x240 47 ^{1/4} "x94 ^{1/2} " | 60x120 23 ^{5/8} "x47 ^{1/4} " |
|--------------|-------|---------|---|--|---|

I FILATI DI REX



DORIAN GRAY RUGIADA

MATTE

767049

767084

767121






Dorian Gray fiordaliso



Dorian Gray glicine

GRES PORCELLANATO DECORATO - DECORATED PORCELAIN TILES
 SQUADRATO - SQUARED

| 6 mm 1/4"  | COLOR | SURFACE | 120x280 | 120x240 | 60x120 | |
|---|---|------------------------|--|---|---|--------|
| | | | 47 ¹ / ₄ "x110 ¹ / ₄ " | 47 ¹ / ₄ "x94 ¹ / ₂ " | 23 ⁵ / ₈ "x47 ¹ / ₄ " | |
| I FILATI DI REX |  | DORIAN GRAY FIORDALISO | MATTE | 767051 | 767086 | 767123 |
| |  | DORIAN GRAY GLICINE | MATTE | 767050 | 767085 | 767122 |

i filati di rex



Goldfinger rugiada

GRES PORCELLANATO DECORATO - DECORATED PORCELAIN TILES
SQUADRATO - SQUARED

| | | | | | |
|--------------|-------|---------|-------------------------------|------------------------------|-----------------------------|
| 6 mm 1/4" ↑↓ | COLOR | SURFACE | 120x280 47 1/4" x 110 1/4" | 120x240 47 1/4" x 94 1/2" | 60x120 23 5/8" x 47 1/4" |
|--------------|-------|---------|-------------------------------|------------------------------|-----------------------------|

| | | | | | | |
|------------------------|---|--------------------|-------|--------|--------|--------|
| I FILATI DI REX |  | GOLDFINGER RUGIADA | MATTE | 767064 | 767099 | 767136 |
|------------------------|---|--------------------|-------|--------|--------|--------|



Goldfinger acquamarina







Goldfinger glicine



Goldfinger granata

GRES PORCELLANATO DECORATO - DECORATED PORCELAIN TILES
SQUADRATO - SQUARED

| 6 mm 1/4"  | COLOR | SURFACE | 120x280 | 120x240 | 60x120 | |
|---|---|------------------------|--|---|---|--------|
| | | | 47 ¹ / ₄ "x110 ¹ / ₄ " | 47 ¹ / ₄ "x94 ¹ / ₂ " | 23 ⁵ / ₈ "x47 ¹ / ₄ " | |
| I FILATI DI REX |  | GOLDFINGER ACQUAMARINA | MATTE | 767066 | 767101 | 767138 |
| |  | GOLDFINGER GLICINE | MATTE | 767065 | 767100 | 767137 |
| |  | GOLDFINGER GRANATA | MATTE | 767067 | 767102 | 767139 |

i filati di rex



Bestegui avorio antico

GRES PORCELLANATO DECORATO - DECORATED PORCELAIN TILES
SQUADRATO - SQUARED

| | | | | | |
|---|-------|---------|-------------------------------|------------------------------|-----------------------------|
| 6 mm 1/4"  | COLOR | SURFACE | 120x280 47 1/4" x 110 1/4" | 120x240 47 1/4" x 94 1/2" | 60x120 23 5/8" x 47 1/4" |
|---|-------|---------|-------------------------------|------------------------------|-----------------------------|

I FILATI DI REX



BESTEGUI AVORIO ANTICO

MATTE

767052

767087

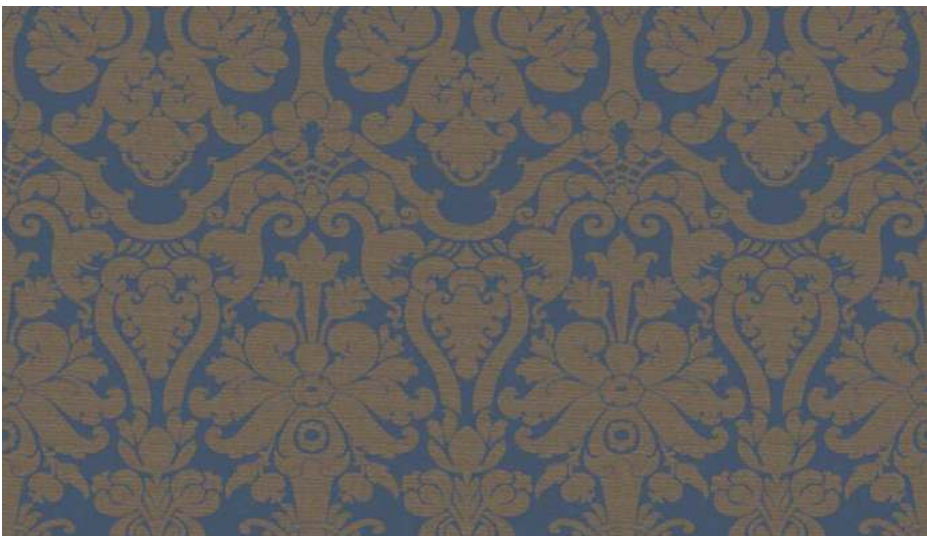
767124



Bestegui ambra






Bestegui granata



Bestegui blu di prussia

GRES PORCELLANATO DECORATO - DECORATED PORCELAIN TILES
 SQUADRATO - SQUARED

| 6 mm 1/4" ↑↓ | COLOR | SURFACE | 120x280 | 120x240 | 60x120 | |
|---|---|-------------------------|---|--|--|--------|
| | | | 47 ^{1/4"} x110 ^{1/4"} | 47 ^{1/4"} x94 ^{1/2"} | 23 ^{5/8"} x47 ^{1/4"} | |
|  | BESTEGUI AMBRA | MATTE | 767053 | 767088 | 767125 | |
| I FILATI DI REX |  | BESTEGUI GRANATA | MATTE | 767054 | 767089 | 767126 |
| |  | BESTEGUI BLU DI PRUSSIA | MATTE | 767055 | 767090 | 767127 |

i filati di rex



San Marco avorio antico

GRES PORCELLANATO DECORATO - DECORATED PORCELAIN TILES
SQUADRATO - SQUARED

| | | | | | |
|---|-------|---------|---|--|---|
| 6 mm 1/4"  | COLOR | SURFACE | 120x280 47 ¹ / ₄ "x110 ¹ / ₄ " | 120x240 47 ¹ / ₄ "x94 ¹ / ₂ " | 60x120 23 ⁵ / ₈ "x47 ¹ / ₄ " |
|---|-------|---------|---|--|---|

I FILATI DI REX



SAN MARCO AVORIO ANTICO

MATTE

767060

767095

767132



San Marco ambra






San Marco granata



San Marco blu di prussia

GRES PORCELLANATO DECORATO - DECORATED PORCELAIN TILES
 SQUADRATO - SQUARED

| 6 mm 1/4" ↑↓ | COLOR | SURFACE | 120x280 | 120x240 | 60x120 | |
|---|---|--------------------------|--|---|---|--------|
| | | | 47 ¹ / ₄ "x110 ¹ / ₄ " | 47 ¹ / ₄ "x94 ¹ / ₂ " | 23 ⁵ / ₈ "x47 ¹ / ₄ " | |
|  | SAN MARCO AMBRA | MATTE | 767061 | 767096 | 767133 | |
| I FILATI DI REX |  | SAN MARCO GRANATA | MATTE | 767062 | 767097 | 767134 |
| |  | SAN MARCO BLU DI PRUSSIA | MATTE | 767063 | 767098 | 767135 |

i filati di rex

Op Art vaniglia

GRES PORCELLANATO DECORATO - DECORATED PORCELAIN TILES
SQUADRATO - SQUARED

| | | | | | |
|---|-------|---------|---|--|---|
| 6 mm 1/4"  | COLOR | SURFACE | 120x280 47 ^{1/4} "x110 ^{1/4} " | 120x240 47 ^{1/4} "x94 ^{1/2} " | 60x120 23 ^{5/8} "x47 ^{1/4} " |
|---|-------|---------|---|--|---|

I FILATI DI REX



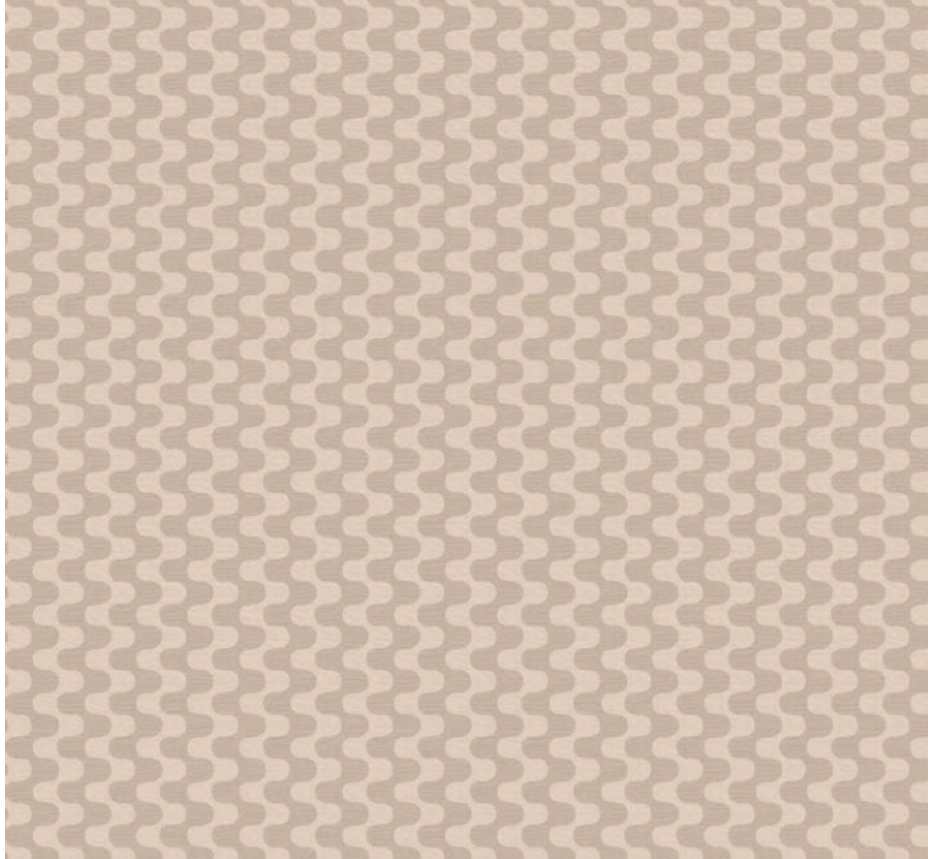
OP ART VANIGLIA

MATTE

767068

767103

767140



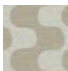


Op Art cipria



Op Art tè verde

GRES PORCELLANATO DECORATO - DECORATED PORCELAIN TILES
SQUADRATO - SQUARED

| 6 mm 1/4"  | COLOR | SURFACE | 120x280 | 120x240 | 60x120 | |
|---|---|-----------------|--|---|---|--------|
| | | | 47 ^{1/4} "x110 ^{1/4} " | 47 ^{1/4} "x94 ^{1/2} " | 23 ^{5/8} "x47 ^{1/4} " | |
| I FILATI DI REX |  | OP ART CIPRIA | MATTE | 767069 | 767104 | 767141 |
| |  | OP ART TÈ VERDE | MATTE | 767070 | 767105 | 767142 |

i filati di rex



Vague vaniglia

GRES PORCELLANATO DECORATO - DECORATED PORCELAIN TILES
SQUADRATO - SQUARED

| | | | | | |
|---|-------|---------|-------------------------------|------------------------------|-----------------------------|
| 6 mm 1/4"  | COLOR | SURFACE | 120x280 47 1/4" x 110 1/4" | 120x240 47 1/4" x 94 1/2" | 60x120 23 5/8" x 47 1/4" |
|---|-------|---------|-------------------------------|------------------------------|-----------------------------|

I FILATI DI REX



VAGUE VANIGLIA

MATTE

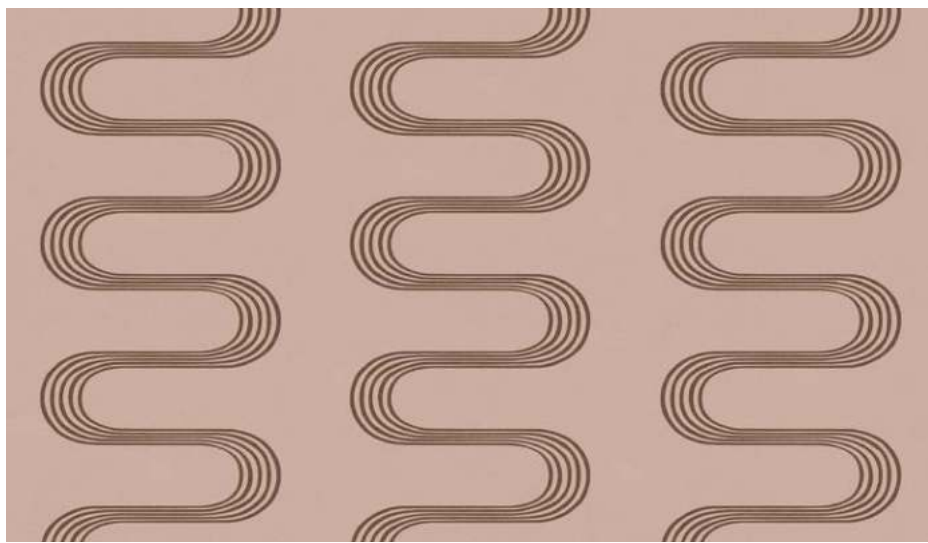
767071

767106

767143



Vague giada







Vague cipria

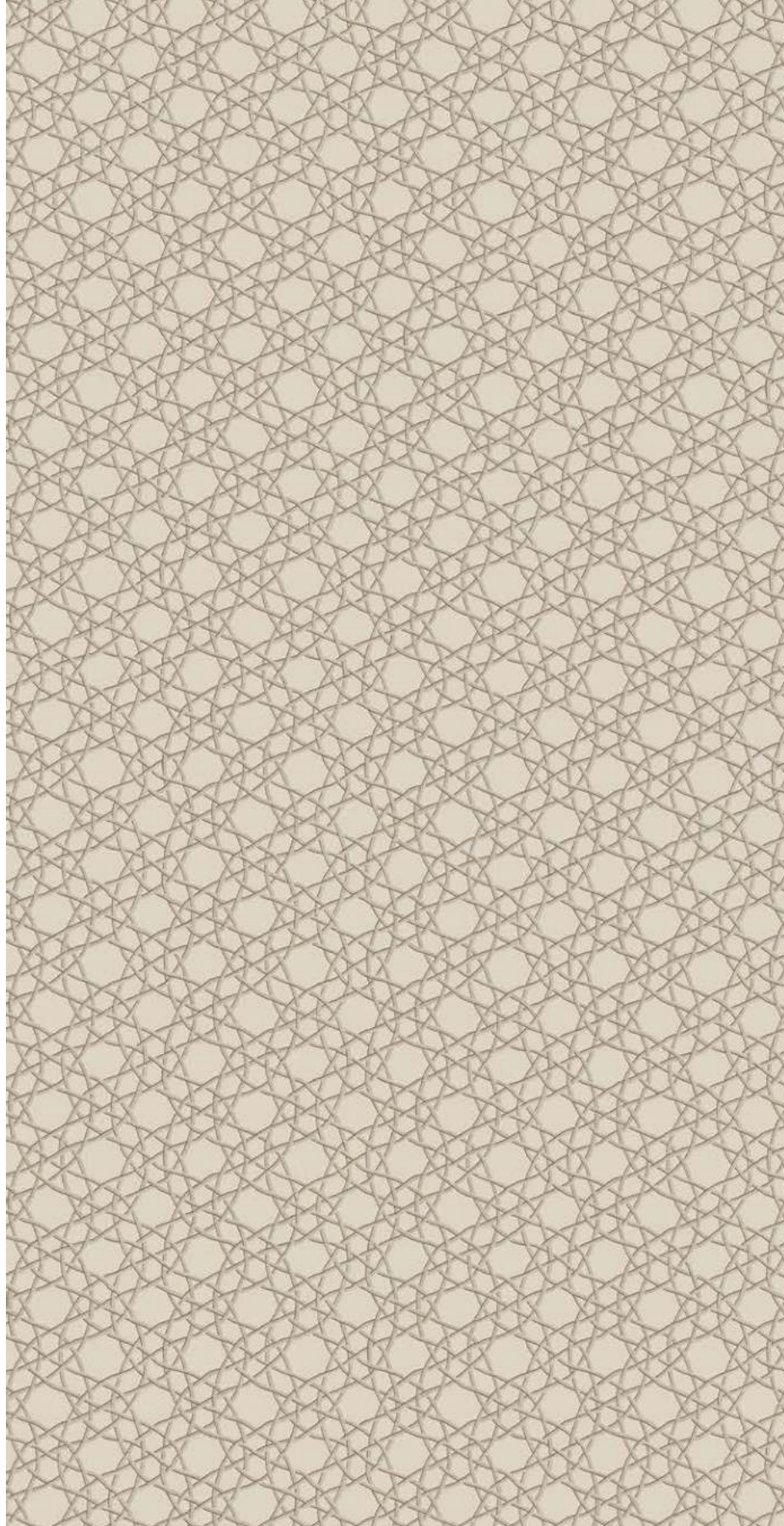


Vague scarlatto

GRES PORCELLANATO DECORATO - DECORATED PORCELAIN TILES
SQUADRATO - SQUARED

| 6 mm 1/4"  | COLOR | SURFACE | 120x280 | 120x240 | 60x120 | |
|---|---|-----------------|--|---|---|--------|
| | | | 47 ¹ / ₄ "x110 ¹ / ₄ " | 47 ¹ / ₄ "x94 ¹ / ₂ " | 23 ⁵ / ₈ "x47 ¹ / ₄ " | |
|  | VAGUE GIADA | MATTE | 767073 | 767108 | 767145 | |
| I FILATI DI REX |  | VAGUE CIPRIA | MATTE | 767072 | 767107 | 767144 |
| |  | VAGUE SCARLATTO | MATTE | 767074 | 767109 | 767146 |

i filati di rex



Happy Hour vaniglia

GRES PORCELLANATO DECORATO - DECORATED PORCELAIN TILES
SQUADRATO - SQUARED

| | | | | | |
|---|-------|---------|-------------------------------|------------------------------|-----------------------------|
| 6 mm 1/4"  | COLOR | SURFACE | 120x280 47 1/4" x 110 1/4" | 120x240 47 1/4" x 94 1/2" | 60x120 23 5/8" x 47 1/4" |
|---|-------|---------|-------------------------------|------------------------------|-----------------------------|

I FILATI DI REX



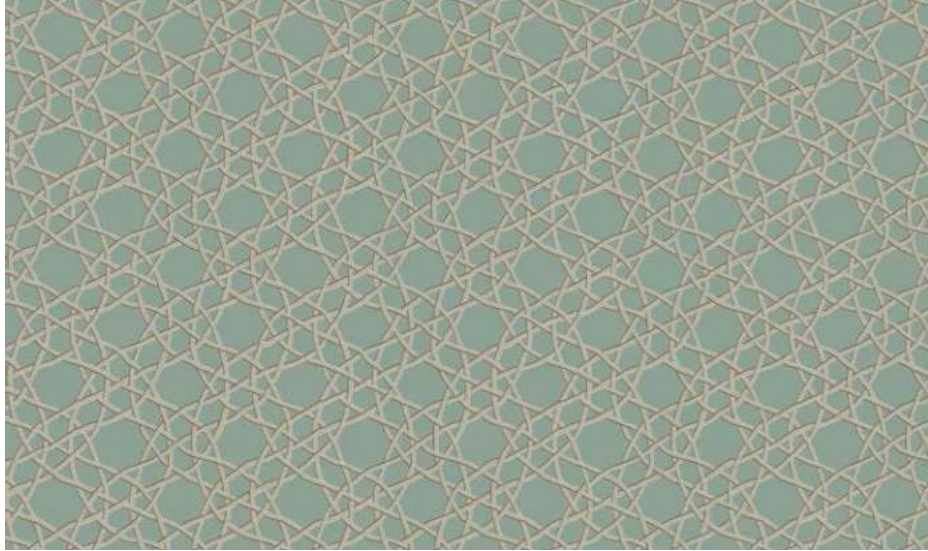
HAPPY HOUR VANIGLIA

MATTE

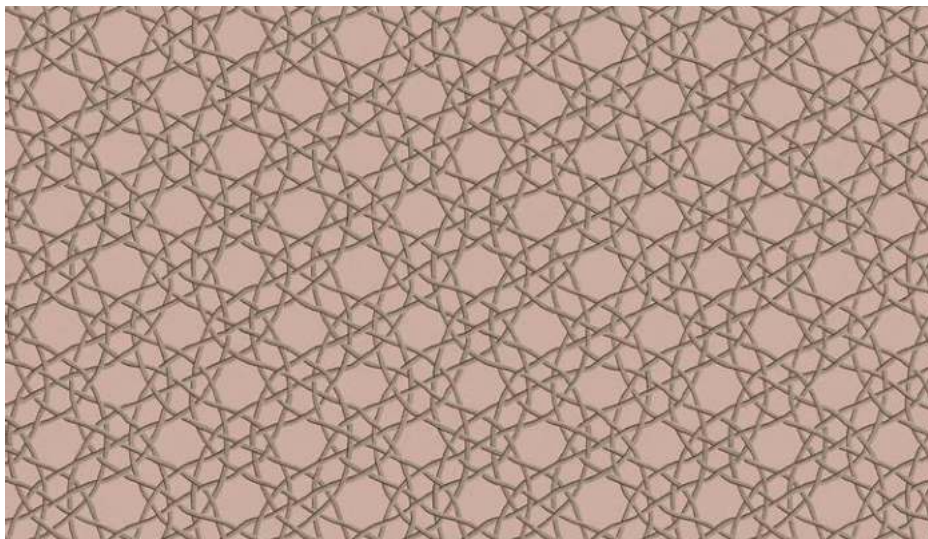
767213

767217

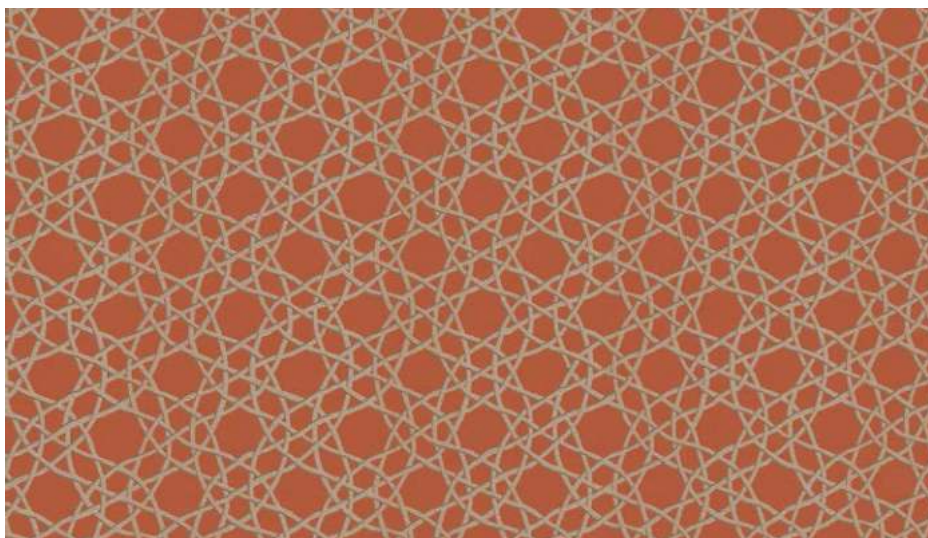
767221



Happy Hour giada






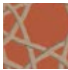
Happy Hour cipria



Happy Hour scarlatto

i filati di rex

GRES PORCELLANATO DECORATO - DECORATED PORCELAIN TILES
SQUADRATO - SQUARED

| 6 mm 1/4"  | COLOR | SURFACE | 120x280 | 120x240 | 60x120 |
|---|---|-------------------|---|--|--|
| | | | 47 ^{1/4"} x110 ^{1/4"} | 47 ^{1/4"} x94 ^{1/2"} | 23 ^{5/8"} x47 ^{1/4"} |
|  | HAPPY HOUR GIADA | MATTE | 767215 | 767219 | 767223 |
| I FILATI DI REX |  | HAPPY HOUR CIPRIA | 767214 | 767218 | 767222 |
|  | HAPPY HOUR SCARLATTO | MATTE | 767216 | 767220 | 767224 |

le palladiane di rex

spessore/thickness 6 mm - 1/4"

120x240 / 47^{1/4"}x94^{1/2"}

120x120 / 47^{1/4"}x47^{1/4"}

60x120 / 23^{5/8"}x47^{1/4"}

"le palladiane di rex" è un ritorno alle origini e al carattere autentico del pavimento alla "palladiana", che porta con sé il fascino storico delle dimore signorili italiane. Il marchio Rex reinterpreta in modo fortemente decorativo le caratteristiche di queste prestigiose e lussuose pavimentazioni attraverso il richiamo a due cromie base, bianco e miele, dalla cui combinazione con altre tonalità nascono originali mélange che prendono il nome di "opus". Opus bianco e Opus bianco variegato si inseriscono nella base monocromatica che prende il nome di Malta bianca e che richiama l'estetica del riempimento con il quale si realizzava questa antica pavimentazione.

"le palladiane di rex" is a return to the origins and the authentic character of "Palladiana floors" which brings with it all the historic aura of antique Italian palaces. The Rex brand offers a strongly decorative reinterpretation of the characteristics of this luxurious, rich flooring via two basic colours, Bianco and Miele, combined with other shades to originate original colour mixes known as "opus". Opus Bianco and Opus Bianco Variegato are used in combination with a monochrome base known as Malta Bianca, which recalls the look of the filler used for laying floors of this antique variety.

« le palladiane di rex » marque un retour aux origines et au caractère authentique du sol de style palladien, qui porte le charme historique des demeures seigneuriales italiennes. La marque Rex revisite de façon très décorative les caractéristiques de ces sols prestigieux et luxueux à travers le renvoi à deux couleurs de base, le bianco et le miele, dont l'association avec d'autres tonalités donne naissance à d'originaux mélanges qui prennent le nom d' « opus ». Opus bianco et Opus bianco variegato s'insèrent dans la base monochromatique appelée Malta bianca qui rappelle l'esthétique du remplissage avec lequel on réalisait cet ancien revêtement du sol.

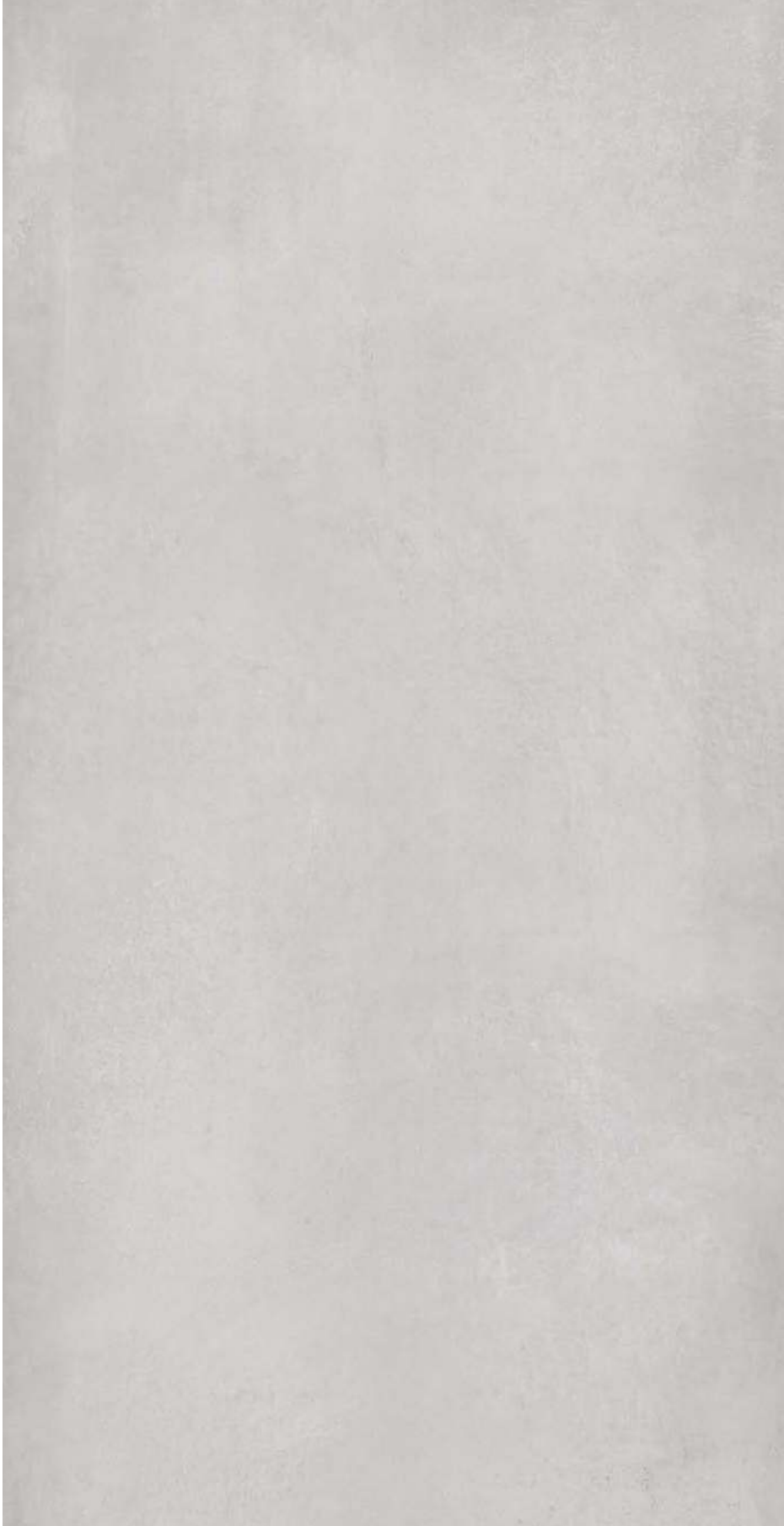
„le palladiane di rex“ ist eine Rückkehr zu den Ursprüngen und dem authentischen Charakter des Fußbodens „Palladiana“, mit dem historischen Charme der herrschaftlicher Häuser Italiens. Die Marke Rex interpretiert die Merkmale dieser kostbaren und luxuriösen Bodenbeläge auf höchst dekorative Weise durch den Einsatz zweier Grundfarben, Bianco und Miele. Sie werden mit anderen Farbtönen kombiniert und bringen originelle Melangeeffekte zum Vorschein: Ihr Name? Opus. Opus bianco und Opus bianco variegato fügen sich in die monochrome Grundfarbe Malta bianca ein, welche an die Ästhetik des Füllvorgangs erinnert, mit dem man einst diesen alten Bodenbelag herstellte.

"le palladiane di rex" es un retorno a los orígenes y al carácter auténtico del piso "palladiana", que lleva consigo el encanto histórico de las mansiones señoriales italianas. La marca Rex reinterpreta en forma fuertemente decorativa las características de estos prestigiosos y lujosos pavimentos, a través de la referencia a dos cromatismos básicos, bianco y miele, de cuya combinación con otras tonalidades nacen originales composiciones que toman el nombre de "opus". Opus bianco y Opus bianco variegato se integran en la base monocromática que toma el nombre de Malta bianca, y que remite a la técnica de rellenado con el que se construían estos antiguos pavimentos.

"le palladiane di rex" - это возврат к истокам и к неподдельному характеру пола из мраморной крошки, несущего в себе старинное очарование домов итальянской знати. Бренд Rex переосмысливает в выражено декоративном ключе характеристики этого престижного и роскошного пола через воспроизведение двух основных цветов, белого и медового, в результате сочетания которых с другими тонами создаются оригинальные смеси, называющиеся "opus". Opus bianco и Opus bianco variegato помещаются в одноцветную основу, называющуюся Malta bianca, воспроизводящую эстетику заполнения, при помощи которого изготавливались эти старинные полы.



floor: opus bianco variegato glossy 120x120 47^{1/4} x 47^{1/4}in



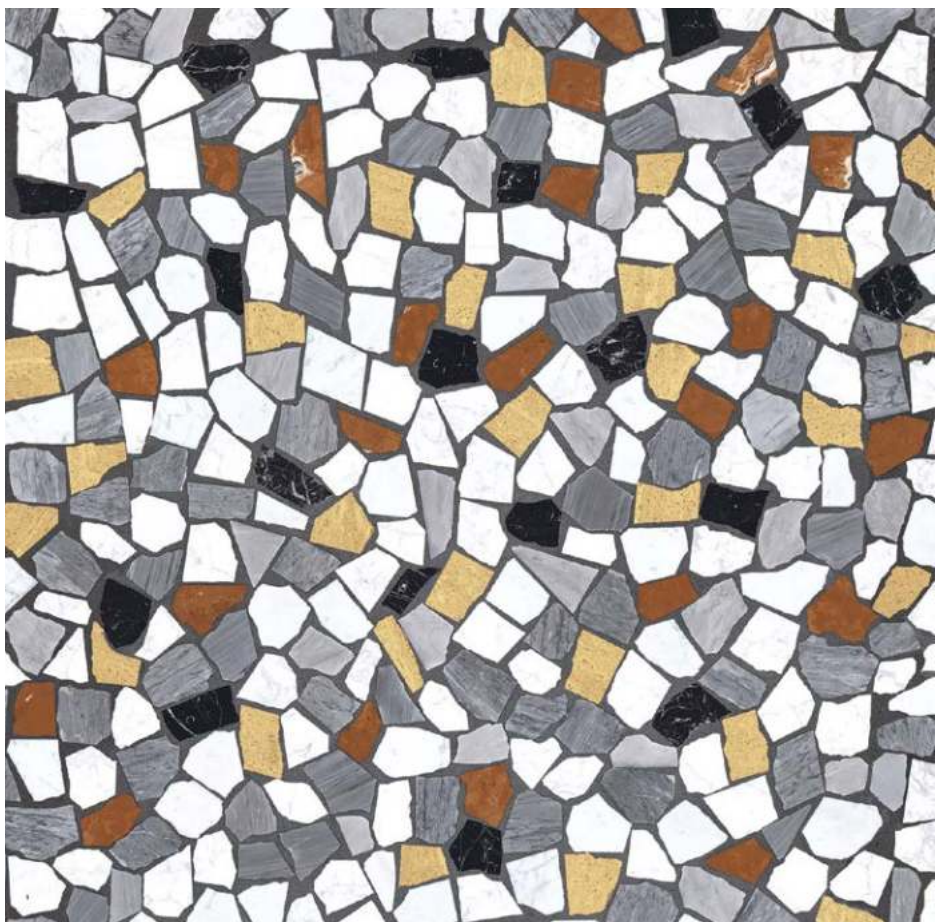
malta bianca

GRES FINE PORCELLANATO - FINE PORCELAIN STONEWARE
SQUADRATO - SQUARED

| 6 mm 1/4"  | COLOR | SURFACE | 120x240 | 120x120 | 60x120 |
|---|--------------|---------|--|--|--|
| | | | 47 ^{1/4"} x94 ^{1/2"} | 47 ^{1/4"} x47 ^{1/4"} | 23 ^{5/8"} x47 ^{1/4"} |
| LE PALLADIANE DI REX  | MALTA BIANCA | GLOSSY | 767295 | 767307 | 767322 |
| | | MATTE | 767289 | 767301 | 767314 |



opus bianco



opus bianco variegato

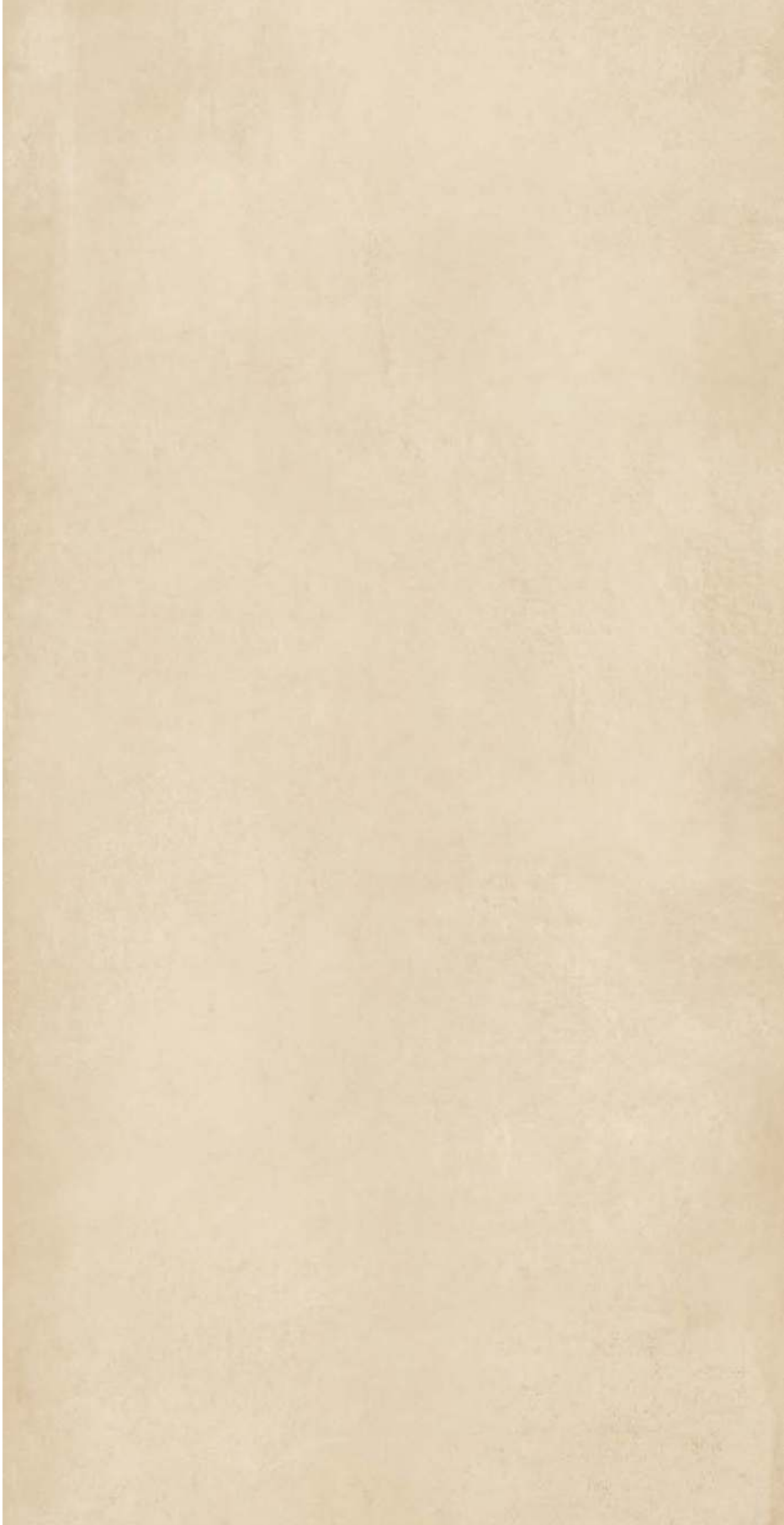
le palladiane di rex

GRES FINE PORCELLANATO - FINE PORCELAIN STONEWARE
SQUADRATO - SQUARED

6 mm 1/4"

| | COLOR | SURFACE | 120x240 47 ^{1/4} "x94 ^{1/2} " | 120x120 47 ^{1/4} "x47 ^{1/4} " | 60x120 23 ^{5/8} "x47 ^{1/4} " |
|--|-----------------------|---------|--|--|---|
| | OPUS BIANCO | GLOSSY | 767296 | 767308 | 767323 |
| | | MATTE | 767290 | 767302 | 767315 |
| | OPUS BIANCO VARIEGATO | GLOSSY | 767297 | 767310 | 767324 |
| | | MATTE | 767291 | 767303 | 767318 |

LE PALLADIANE DI REX



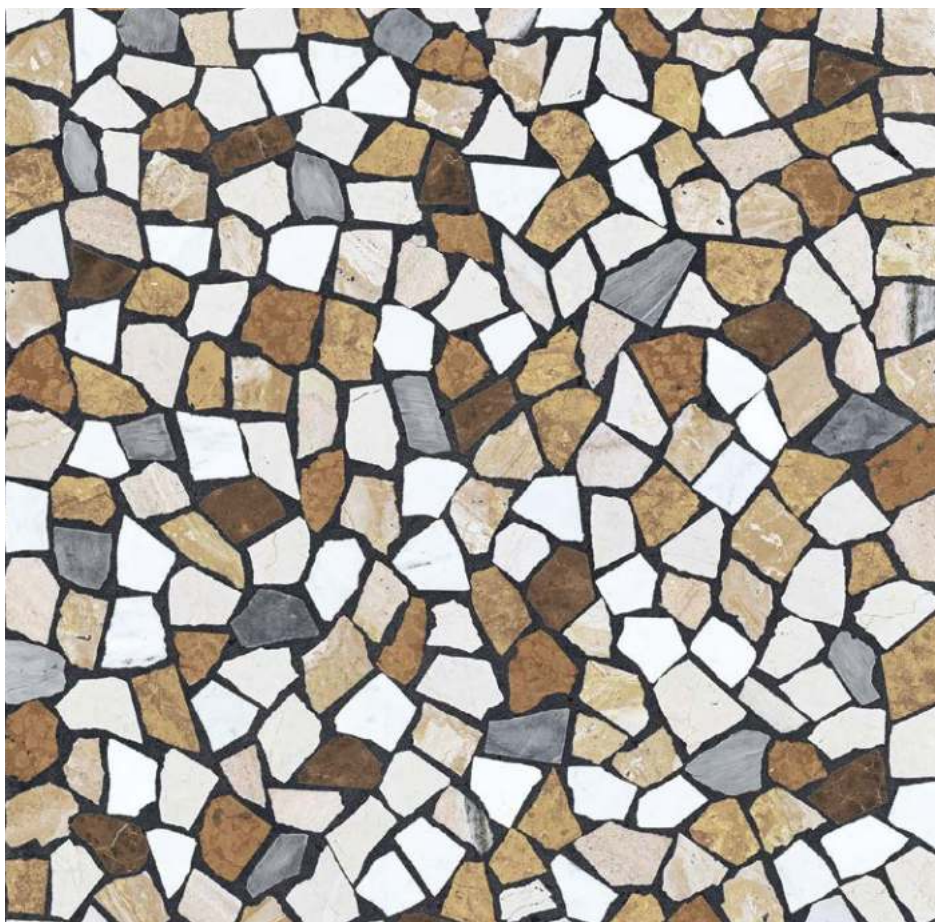
malta miele

GRES FINE PORCELLANATO - FINE PORCELAIN STONEWARE
SQUADRATO - SQUARED

| 6 mm 1/4"  | COLOR | SURFACE | 120x240 | 120x120 | 60x120 |
|---|-------------|---------|--|--|--|
| | | | 47 ^{1/4"} x94 ^{1/2"} | 47 ^{1/4"} x47 ^{1/4"} | 23 ^{5/8"} x47 ^{1/4"} |
| LE PALLADIANE DI REX  | MALTA MIELE | GLOSSY | 767298 | 767311 | 767325 |
| | | MATTE | 767292 | 767304 | 767319 |



opus miele





opus miele variegato

le palladiane di rex

GRES FINE PORCELLANATO - FINE PORCELAIN STONEWARE
SQUADRATO - SQUARED

6 mm 1/4" 

| | COLOR | SURFACE | 120x240 47 ^{1/4} "x94 ^{1/2} " | 120x120 47 ^{1/4} "x47 ^{1/4} " | 60x120 23 ^{5/8} "x47 ^{1/4} " |
|---|----------------------|---------|--|--|---|
|  | OPUS MIELE | GLOSSY | 767299 | 767312 | 767326 |
| | | MATTE | 767293 | 767305 | 767320 |
|  | OPUS MIELE VARIEGATO | GLOSSY | 767300 | 767313 | 767327 |
| | | MATTE | 767294 | 767306 | 767321 |

LE PALLADIANE DI REX

FLORIM OVERSIZE
magnlum

spessore/thickness 6 mm - 1/4"

160x320 / 63"x126"
120x280 / 47^{1/4}"x126"
120x240 / 47^{1/4}"x94^{1/2}"
160x160 / 63"x63"
120x120 / 47^{1/4}"x47^{1/4}"
60x120 / 23^{5/8}"x47^{1/4}"

spessore/thickness 10 mm - 3/8"

80x180 / 31^{1/2}"x70^{6/7}"
60x120 / 23^{5/8}"x47^{1/4}"
80x80 / 31^{1/2}"x31^{1/2}"
40x80 / 15^{3/4}"x31^{1/2}"
60x60 / 23^{5/8}"x23^{5/8}"

les bijoux de rex

La collezione "les bijoux de rex" si ispira a marmi dalle superfici talmente rare e preziose da poter essere paragonate a vere e proprie opere d'arte. Si spazia da minerali nobili abilmente lavorati per la creazione di ricercati gioielli artigianali a meravigliosi marmi utilizzati nella realizzazione di importanti architetture e sculture fino a dipinti di celebri artisti. L'essenza di questa collezione risiede nella possibilità di comunicare un fascino artistico attraverso lo stile e la grande forza espressiva tipica del marchio Rex.

The "les bijoux de rex" collection is inspired by marbles with such rare, precious surfaces that they are like genuine works of art. They range from choice minerals skilfully worked to create exquisite hand-made jewellery to wonderful marbles used in the realisation of major works of architecture and sculpture, through to paintings by famous artists. The essence of this collection lies in its ability to convey artistic beauty through the style and great strength of expression for which the Rex brand is justly famous.

La collection « les bijoux de rex » s'inspire de marbres aux surfaces rares et précieuses, dignes d'être comparées à de véritables œuvres d'art. Elle embrasse aussi bien les minéraux nobles habilement travaillés pour la création de bijoux artisanaux sophistiqués que les merveilleux marbres utilisés dans la réalisation d'importantes architectures et sculptures, ou encore les tableaux de célèbres artistes. L'essence de cette collection réside dans la possibilité de communiquer un certain charme artistique à travers le style et la grande force expressive typiques de la marque Rex.

Die Kollektion „les bijoux de rex“ stützt sich auf derart seltene und kostbare Marmorflächen, dass sie mit echten Kunstwerken vergleichbar sind. Die Kollektion reicht von edlen Mineralien, die für auserlesene handgefertigte Schmuckobjekte verarbeitet werden, über wunderbare Marmore, die zur Schaffung wichtiger architektonischer Baulösungen und Skulpturen eingesetzt werden, bis hin zu Gemälden berühmter Künstler. Bei dieser Kollektion liegt das Hauptaugenmerk auf die Möglichkeit, durch den Stil und die große Ausdruckskraft, die für die Marke Rex so typisch ist, einen künstlerischen Charme zu vermitteln.

La colección "les bijoux de rex" se inspira en mármoles de superficies talmente raras y preciosas que las podemos comparar con verdaderas obras de arte. Incluye minerales nobles, hábilmente elaborados para crear refinadas joyas artesanales, maravillosos mármoles, utilizados en la creación de importantes arquitecturas y esculturas, e incluso pinturas de célebres artistas. La esencia de esta colección reside en la posibilidad de comunicar un encanto artístico a través del estilo y de la gran fuerza expresiva típica de la marca Rex.

Коллекция "les bijoux de rex" вдохновляется мрамором со столь редким и ценным рисунком, что ее можно назвать настоящим произведением искусства. В нее входят как престижные минералы, мастерски обрабатываемые для создания изысканных ремесленных драгоценных украшений, так и удивительные сорта мрамора, которые используются в создании важных архитектурных и скульптурных работ, вплоть до картин известных художников. Сущность этой коллекции заключается в возможности излучать художественное очарование посредством стиля и большой выразительной силы, характерной для бренда Rex.





calacatta altissimo blanc

GRES PORCELLANATO COLORATO IN MASSA - COLOURED BODY PORCELAIN STONEWARE
SQUADRATO - SQUARED

FLORIM OVERSIZE
magnum

| | COLOR | SURFACE | 160x320 63"x126" | 120x280 47 ^{1/4} "x110 ^{1/4} " | 120x240 47 ^{1/4} "x94 ^{1/2} " | 160x160 63"x63" | 120x120 47 ^{1/4} "x47 ^{1/4} " | 60x120 23 ^{5/8} "x47 ^{1/4} " |
|--------------|------------------------------|---------|---------------------|---|--|--------------------|--|---|
| 6 mm 1/4" ↑↓ | CALACATTA ALTISSIMO BLANC | MATTE | 765660 | 765682 | 765713 | 765670 | 765751 | 765773 |
| | | GLOSSY | 765665 | 765697 | 765721 | 765675 | 765759 | 765781 |

| | COLOR | SURFACE | 80x180 31 ^{1/2} "x70 ^{5/7} " | 80x80 31 ^{1/2} "x31 ^{1/2} " | 40x80 15 ^{3/4} "x31 ^{1/2} " | 60x120 23 ^{5/8} "x47 ^{1/4} " | 60x60 23 ^{5/8} "x23 ^{5/8} " |
|---------------|------------------------------|---------|---|--|--|---|--|
| 10 mm 3/8" ↑↓ | CALACATTA ALTISSIMO BLANC | MATTE | 766086 | 766364 | 766367 | 766329 | 766339 |
| | | GLOSSY | 766091 | 766365 | 766368 | 766330 | 766342 |



les bijoux de rex

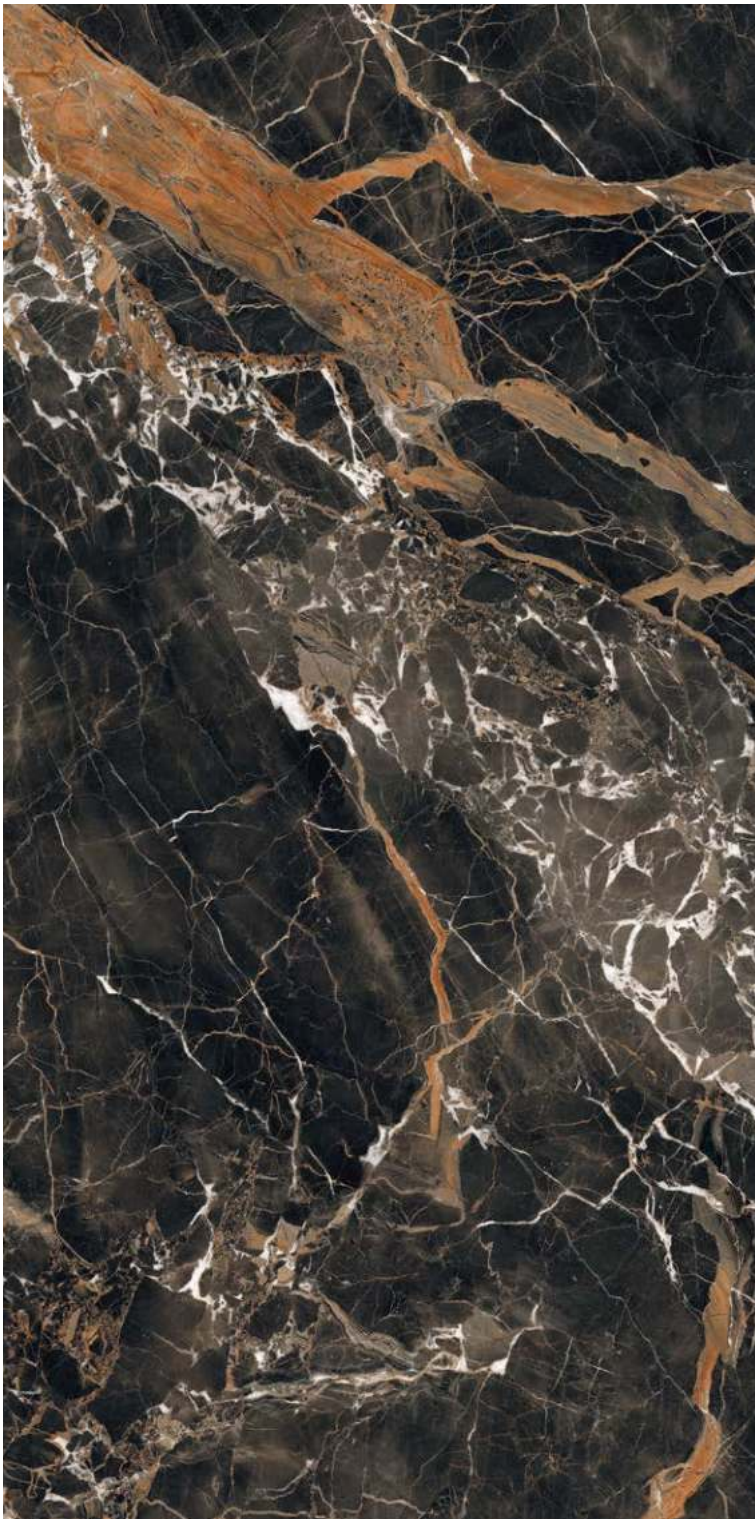
onyx blanche

GRES PORCELLANATO COLORATO IN MASSA - COLOURED BODY PORCELAIN STONEWARE
SQUADRATO - SQUARED

FLORIM OVERSIZE
magnUm

| | COLOR | SURFACE | 160x320 63"x126" | 120x280 47 ¹ / ₄ "x110 ¹ / ₄ " | 120x240 47 ¹ / ₄ "x94 ¹ / ₂ " | 160x160 63"x63" | 120x120 47 ¹ / ₄ "x47" | 60x120 23 ⁵ / ₈ "x47 ¹ / ₄ " |
|--------------|--------------|---------|---------------------|---|--|--------------------|---|---|
| 6 mm 1/4" ↑↓ | ONYX BLANCHE | MATTE | 765659 | 765680 | 765704 | 765669 | 765750 | 765768 |
| | | GLOSSY | 765664 | 765693 | 765720 | 765674 | 765758 | 765780 |

| | COLOR | SURFACE | 80x180 31 ¹ / ₂ "x70 ⁶ / ₇ " | 80x80 31 ¹ / ₂ "x31 ¹ / ₂ " | 40x80 15 ³ / ₄ "x31 ¹ / ₂ " | 60x120 23 ⁵ / ₈ "x47 ¹ / ₄ " | 60x60 23 ⁵ / ₈ "x23 ⁵ / ₈ " |
|---------------|--------------|---------|---|--|--|---|--|
| 10 mm 3/8" ↑↓ | ONYX BLANCHE | MATTE | 766085 | 766362 | 766360 | 766325 | 766337 |
| | | GLOSSY | 766090 | 766363 | 766361 | 766328 | 766338 |



ombre de caravage

GRES PORCELLANATO COLORATO IN MASSA - COLOURED BODY PORCELAIN STONEWARE
 SQUADRATO - SQUARED

FLOIRIM OVERSIZE
magnum

| | COLOR | SURFACE | 160x320 63"x126" | 120x280 47 ¹ / ₄ "x110 ¹ / ₄ " | 120x240 47 ¹ / ₄ "x94 ¹ / ₂ " | 160x160 63"x63" | 120x120 47 ¹ / ₄ "x47 ¹ / ₄ " | 60x120 23 ⁵ / ₈ "x47 ¹ / ₄ " |
|--------------|-------------------|---------|---------------------|---|--|--------------------|--|---|
| 6 mm 1/4" ↑↓ | OMBRE DE CARAVAGE | MATTE | 765661 | 765683 | 765714 | 765671 | 765752 | 765774 |
| | | GLOSSY | 765666 | 765698 | 765723 | 765676 | 765761 | 765782 |

| | COLOR | SURFACE | 80x180 31 ¹ / ₂ "x70 ⁵ / ₇ " | 80x80 31 ¹ / ₂ "x31 ¹ / ₂ " | 40x80 15 ³ / ₄ "x31 ¹ / ₂ " | 60x120 23 ⁵ / ₈ "x47 ¹ / ₄ " | 60x60 23 ⁵ / ₈ "x23 ⁵ / ₈ " |
|---------------|-------------------|---------|---|--|--|---|--|
| 10 mm 3/8" ↑↓ | OMBRE DE CARAVAGE | MATTE | 766088 | 766485 | 766369 | 766331 | 766340 |
| | | GLOSSY | 766093 | 766366 | 766370 | 766332 | 766341 |



les bijoux de rex

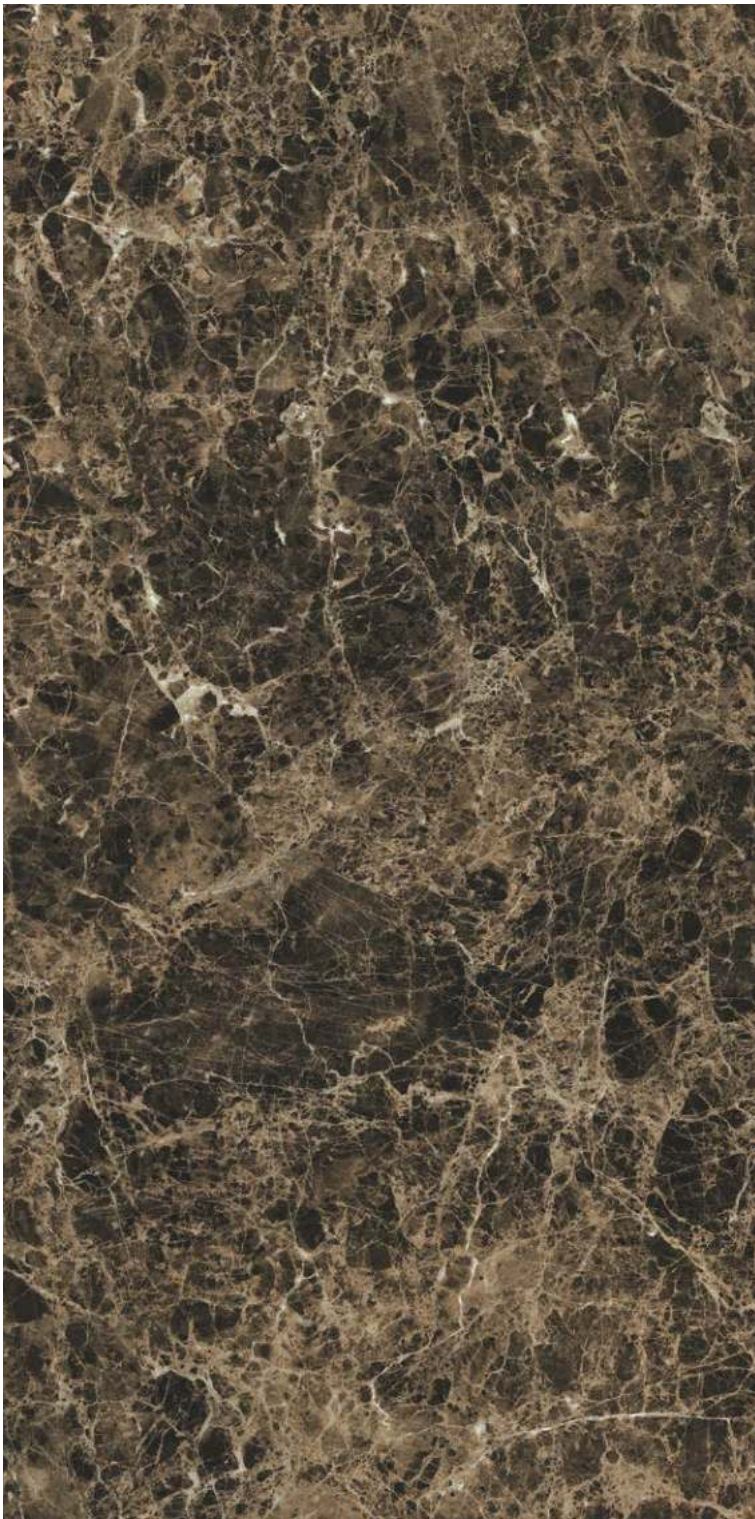
brèche capraia

GRES PORCELLANATO COLORATO IN MASSA - COLOURED BODY PORCELAIN STONEWARE
 SQUADRATO - SQUARED

FLORIM OVERSIZE
magnum

| | COLOR | SURFACE | 160x320 63"x126" | 120x280 47 ^{1/4} "x110 ^{1/4} " | 120x240 47 ^{1/4} "x94 ^{1/2} " | 160x160 63"x63" | 120x120 47 ^{1/4} "x47 ^{1/4} " | 60x120 23 ^{5/8} "x47 ^{1/4} " |
|--------------|----------------|---------|---------------------|---|--|--------------------|--|---|
| 6 mm 1/4" ↑↓ | BRÈCHE CAPRAIA | MATTE | 765662 | 765684 | 765715 | 765672 | 765753 | 765775 |
| | | GLOSSY | 765667 | 765699 | 765724 | 765677 | 765762 | 765783 |

| | COLOR | SURFACE | 80x180 31 ^{1/2} "x70 ^{6/7} " | 80x80 31 ^{1/2} "x31 ^{1/2} " | 40x80 15 ^{3/4} "x31 ^{1/2} " | 60x120 23 ^{5/8} "x47 ^{1/4} " | 60x60 23 ^{5/8} "x23 ^{5/8} " |
|---------------|----------------|---------|---|--|--|---|--|
| 10 mm 3/8" ↑↓ | BRÈCHE CAPRAIA | MATTE | 766087 | 766486 | 766371 | 766334 | 766343 |
| | | GLOSSY | 766092 | 766375 | 766372 | 766333 | 766344 |



marron imperial

GRES PORCELLANATO COLORATO IN MASSA - COLOURED BODY PORCELAIN STONEWARE
 SQUADRATO - SQUARED

FLORIM OVERSIZE
magnum

| | COLOR | SURFACE | 160x320 63"x126" | 120x280 47 ¹ / ₄ "x110 ¹ / ₄ " | 120x240 47 ¹ / ₄ "x94 ¹ / ₂ " | 160x160 63"x63" | 120x120 47 ¹ / ₄ "x47 ¹ / ₄ " | 60x120 23 ⁵ / ₈ "x47 ¹ / ₄ " |
|---------------|-----------------|---------|---|---|--|---|--|---|
| 6 mm 1/4" ↑↓ | MARRON IMPERIAL | MATTE | 765663 | 765685 | 765716 | 765673 | 765754 | 765776 |
| | | GLOSSY | 765668 | 765700 | 765725 | 765678 | 765763 | 765784 |
| | COLOR | SURFACE | 80x180 31 ¹ / ₂ "x70 ⁶ / ₇ " | 80x80 31 ¹ / ₂ "x31 ¹ / ₂ " | 40x80 15 ³ / ₄ "x31 ¹ / ₂ " | 60x120 23 ⁵ / ₈ "x47 ¹ / ₄ " | 60x60 23 ⁵ / ₈ "x23 ⁵ / ₈ " | |
| 10 mm 3/8" ↑↓ | MARRON IMPERIAL | MATTE | 766089 | 766487 | 766373 | 766336 | 766345 | |
| | | GLOSSY | 766094 | 766376 | 766374 | 766335 | 766346 | |





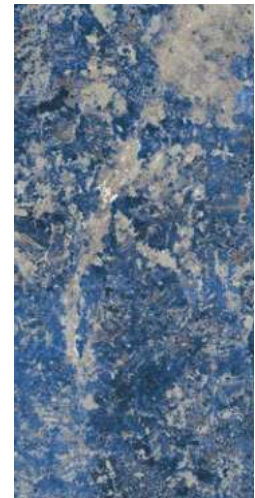
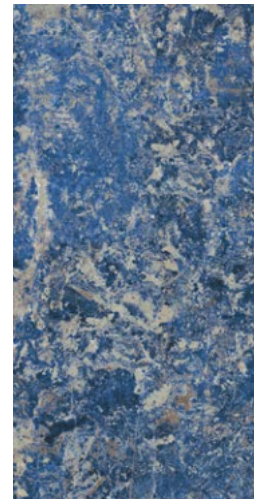
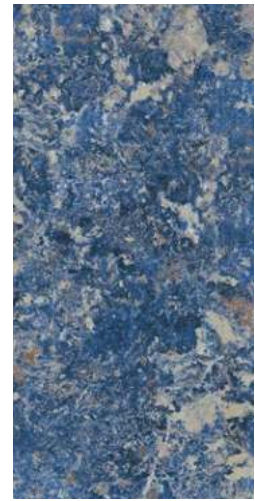
les bijoux de rex

jaspe rouge

GRES PORCELLANATO COLORATO IN MASSA - COLOURED BODY PORCELAIN STONEWARE
 SQUADRATO - SQUARED

FLORIM OVERSIZE
magnUm

| | COLOR | SURFACE | 120x280 47 ^{1/4} "x110 ^{1/4} " | 120x240 47 ^{1/4} "x94 ^{1/2} " | 120x120 47 ^{1/4} "x47 ^{1/4} " | 60x120 23 ^{5/8} "x47 ^{1/4} " |
|---|-------------|---------|---|--|--|---|
|  6 mm 1/4"  | JASPE ROUGE | MATTE | 765686 | 765717 | 765755 | 765777 |
| | | GLOSSY | 765701 | 765726 | 765764 | 765785 |



sodalite bleu

GRES PORCELLANATO COLORATO IN MASSA - COLOURED BODY PORCELAIN STONEWARE
 SQUADRATO - SQUARED

FLOREM OVERSIZE
magnUm

6 mm 1/4" 



COLOR

SODALITE BLEU

SURFACE

MATTE

GLOSSY

120x280
 47^{1/4}"x110^{1/4}"

765690

120x240
 47^{1/4}"x94^{1/2}"

765718

120x120
 47^{1/4}"x47^{1/4}"

765756

765765

60x120
 23^{5/8}"x47^{1/4}"

765778

765786




les quatre saisons


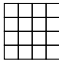
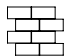









les bijoux de rex

GRES PORCELLANATO COLORATO IN MASSA - COLOURED BODY PORCELAIN STONEWARE
 SQUADRATO - SQUARED



FLORIM OVERSIZE
magnum

| | COLOR | SURFACE | 120x280 47 ^{1/4} "x110 ^{1/4} " | 120x240 47 ^{1/4} "x94 ^{1/2} " | 120x120 47 ^{1/4} "x47 ^{1/4} " | 60x120 23 ^{5/8} "x47 ^{1/4} " |
|---|--------------------|---------|---|--|--|---|
|  | LES QUATRE SAISONS | MATTE | 765691 | 765719 | 765757 | 765779 |
| | | GLOSSY | 765703 | 765728 | 765767 | 765787 |

6 mm 1/4" ↑↓

| 6 mm 1/4"  | COLOR | SURFACE |  mosaico 7,5x7,5 - 3"x3" 30x30 - 11 ^{4/5} "x11 ^{4/5} " | | |  muretto 7,5x15 - 3"x6" 30x30 - 11 ^{4/5} "x11 ^{4/5} " | | |  battiscopa 4,6x80 - 1 ^{3/4} "x31 ^{1/2} " | | |
|---|---|--------------|---|--------|--------|---|--|--|--|--|--|
| | | | | | | | | | | | |
| LES BIJOUX DE REX |  | ONYX BLANCHE | MATTE | 767623 | 767607 | 767636 | | | | | |
| | | | GLOSSY | 767615 | 767599 | 767631 | | | | | |
|  | CALACATTA ALTISSIMO BLANC | MATTE | 767624 | 767608 | 767637 | | | | | | |
| | | GLOSSY | 767616 | 767600 | 767632 | | | | | | |
|  | OMBRE DE CARAVAGE | MATTE | 767625 | 767609 | 767638 | | | | | | |
| | | GLOSSY | 767617 | 767601 | 767633 | | | | | | |
|  | BRÈCHE CAPRAIA | MATTE | 767626 | 767610 | 767639 | | | | | | |
| | | GLOSSY | 767618 | 767602 | 767634 | | | | | | |
|  | MARRON IMPERIAL | MATTE | 767627 | 767611 | 767640 | | | | | | |
| | | GLOSSY | 767619 | 767603 | 767635 | | | | | | |
|  | JASPE ROUGE | MATTE | 767628 | 767612 | - | | | | | | |
| | | GLOSSY | 767620 | 767604 | - | | | | | | |
|  | SODALITE BLEU | MATTE | 767629 | 767613 | - | | | | | | |
| | | GLOSSY | 767621 | 767605 | - | | | | | | |
|  | LES QUATRE SAISONS | MATTE | 767630 | 767614 | - | | | | | | |
| | | GLOSSY | 767622 | 767606 | - | | | | | | |

| 10 mm 3/8" ↑↓ | COLOR | SURFACE |  |  | |
|--------------------------|---|------------------------------|--|--|--------|
| | | | mosaico 3x15 - 1 ^{1/6} "x6" 30x30 - 11 ^{4/5} "x11 ^{4/5} " | mosaico 3D mix 3x3 - 1 ^{1/6} "x1 ^{1/6} " 30x30 - 11 ^{4/5} "x11 ^{4/5} " | |
| LES BIJOUX DE REX |  | ONYX BLACHE | MATTE | 767574 | 767564 |
| | | | GLOSSY | 767569 | |
| |  | CALACATTA ALTISSIMO BLANC | MATTE | 767575 | 767565 |
| | | | GLOSSY | 767570 | |
| |  | OMBRE DE CARAVAGE | MATTE | 767576 | 767566 |
| | | | GLOSSY | 767571 | |
| |  | BRÈCHE CAPRAIA | MATTE | 767577 | 767567 |
| | | | GLOSSY | 767572 | |
| |  | MARRON IMPERIAL | MATTE | 767578 | 767568 |
| | | | GLOSSY | 767573 | |

| 10 mm 3/8" ↑↓ | COLOR | SURFACE |  |  | |
|--------------------------|---|------------------------------|---|---|--------|
| | | | gradino 33x120x3 13"x47 ^{1/4} "x1 ^{1/8} " | battiscopa 4,6x60 - 1 ^{3/4} "x23 ^{5/8} " | |
| LES BIJOUX DE REX |  | ONYX BLACHE | MATTE | 767594 | 767584 |
| | | | GLOSSY | 767589 | |
| |  | CALACATTA ALTISSIMO BLANC | MATTE | 767595 | 767585 |
| | | | GLOSSY | 767590 | |
| |  | OMBRE DE CARAVAGE | MATTE | 767596 | 767586 |
| | | | GLOSSY | 767591 | |
| |  | BRÈCHE CAPRAIA | MATTE | 767597 | 767587 |
| | | | GLOSSY | 767592 | |
| |  | MARRON IMPERIAL | MATTE | 767598 | 767588 |
| | | | GLOSSY | 767593 | |



MADE IN FLORIM

FLORIM CERAMICHE S.p.A.

Uffici Commerciali: Via Canaletto, 24 - 41042 Fiorano Modenese (MO) Italy
Tel. 0536.840.111 - Fax 0536.844.750 - www.florim.com