



E S E D R A

gres fine porcellanato

★★★★★  
**NAXOS**<sup>®</sup>  
FINCIBEC GROUP



# INDICE

index

02

CONCEPT

08

OLIMPIA

16

EFESO

22

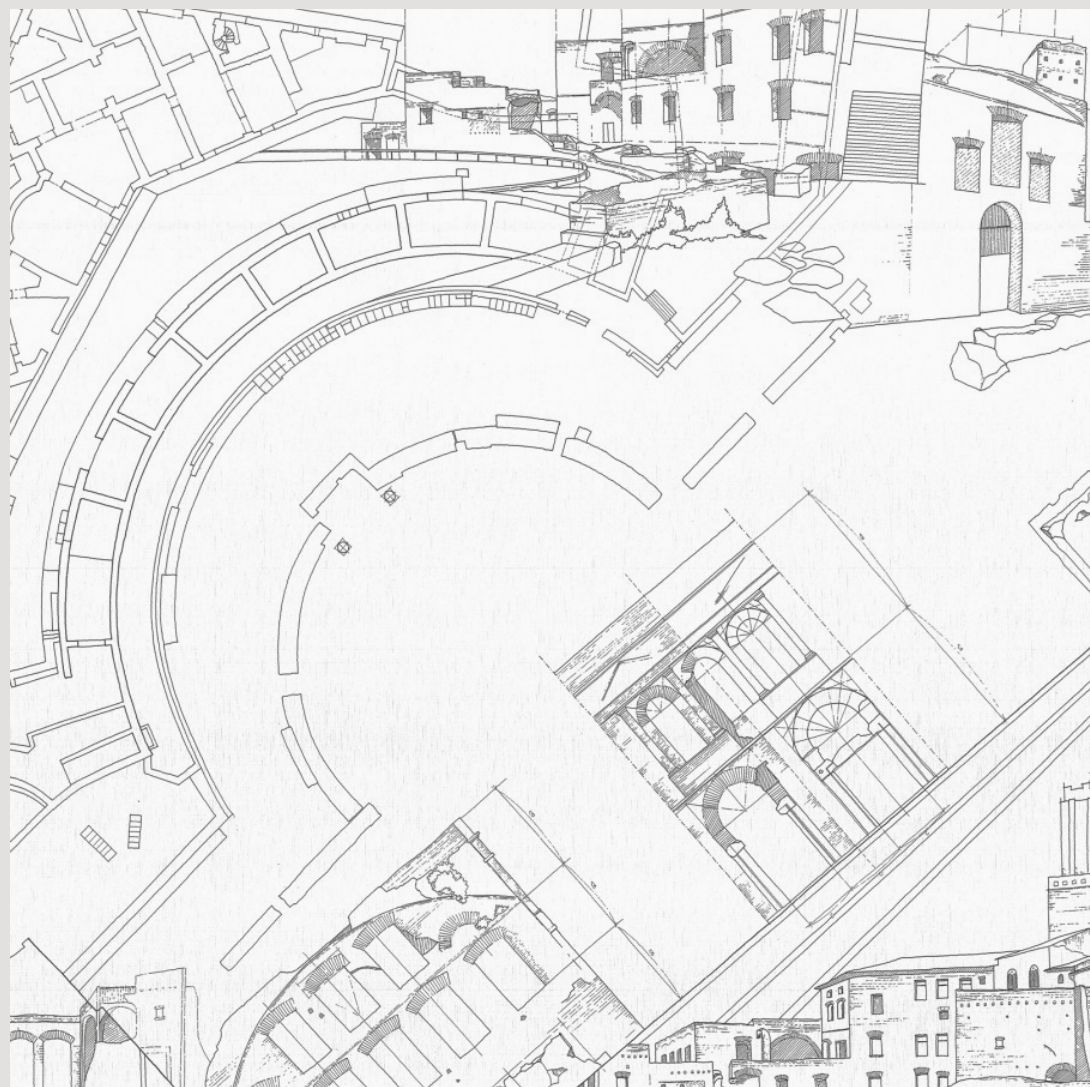
PERGAMO

28

DELFI



E S E D R A



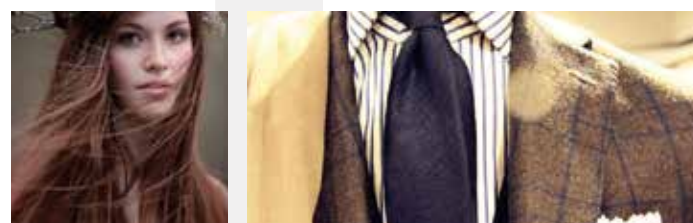
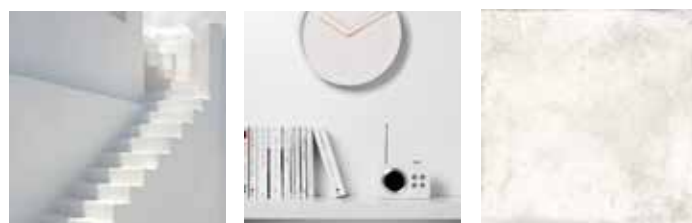
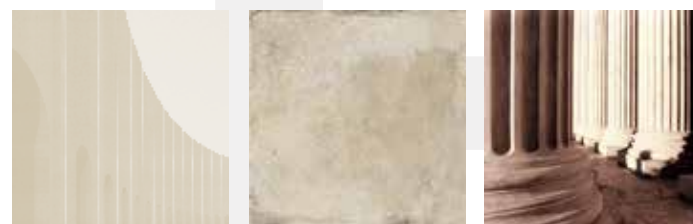
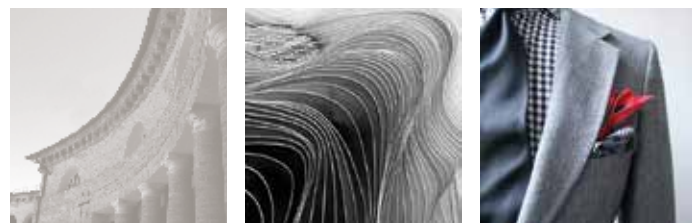
## MATERIA CHE HA UNA STORIA DA RACCONTARE

Material with a story to tell

Esedra è la materia d'incontro tra stili che superano il tempo. Il suo bordo è mosso da delicate sbrecciature pur mantenendo la regolarità geometrica della lastra. L'espressività della superficie si arricchisce di movimenti grafici decisi e garbati al tempo stesso, che interpretano in modo inedito le venature calcaree del travertino. Una materia dallo stile forte, pensata, con i suoi colori ispirati alla natura, per caratterizzare i luoghi del vivere contemporaneo.

Esedra is the material that juxtaposes styles transcending time. Its edges are textured with delicate discontinuities that nonetheless maintain the geometric regularity of the piece. The expressiveness of the surface is enriched with decisive yet subtle motifs that innovatively reinterpret the grain of travertine. A material with a vigorous style, conceived with naturally inspired colours to assert spaces for contemporary living.

ESEDRA

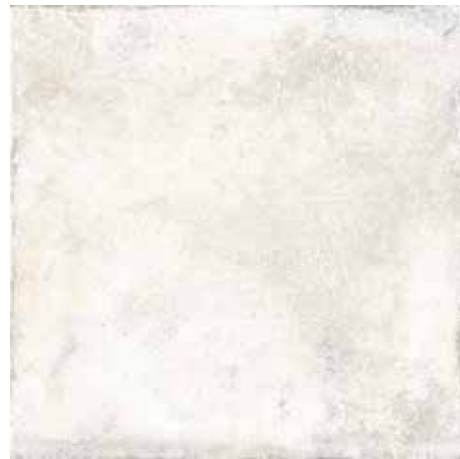


# CLASSICO E CONTEMPORANEO

Classical yet contemporary

**Esedra: una magia che rende il tempo percorribile in "entrambe le direzioni". Oggetti e concetti che segnano un'epoca ma hanno l'energia per tornare attuali in momenti successivi. La bellezza che riesce ad oltrepassare i limiti del tempo. Quella vera. Esedra è tutto questo: materia che recupera il sapore delle antiche lastre sbrecciate dalla mano dell'uomo, un fondamentale architettonico che ha dato vita e carattere a tante piazze medioevali che si rinnova in superfici di incredibile attualità.**

Esedra: a magic that allows time to be lived and enjoyed in both directions. Objects and concepts that trace a bygone era yet have the energy to bound back into the present. A beauty that manages to bypass the limits of time itself. The real definition of beauty. Esedra is all this: a material which reclaims the hand-chipped authenticity of yore, of the fundamental architecture that gave life and character to many a medieval square, yet which reinvents itself with stunningly contemporary timeliness.



## SUPERFICIE NATURALE

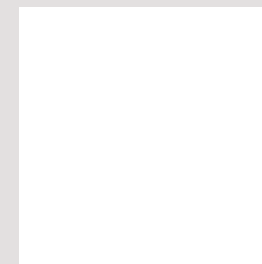
natural surface

1 BORDO NATURALE  
1 natural edge

4 COLORI  
4 colours



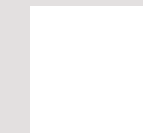
4 FORMATI  
4 sizes



60x60  
24"x24"



30x60  
12"x24"



30x30  
12"x12"



7,3x30  
3"x12"

## SUPERFICIE GRIP

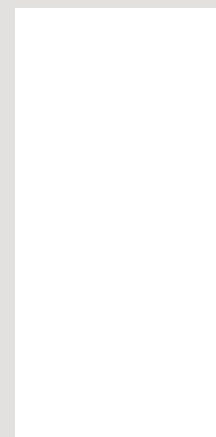
grip surface

1 BORDO NATURALE  
1 natural edge

3 COLORI  
3 colours



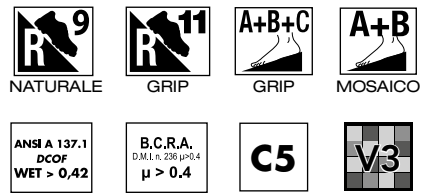
1 FORMATO  
1 size



50x100  
20"x40"



E S E D R A

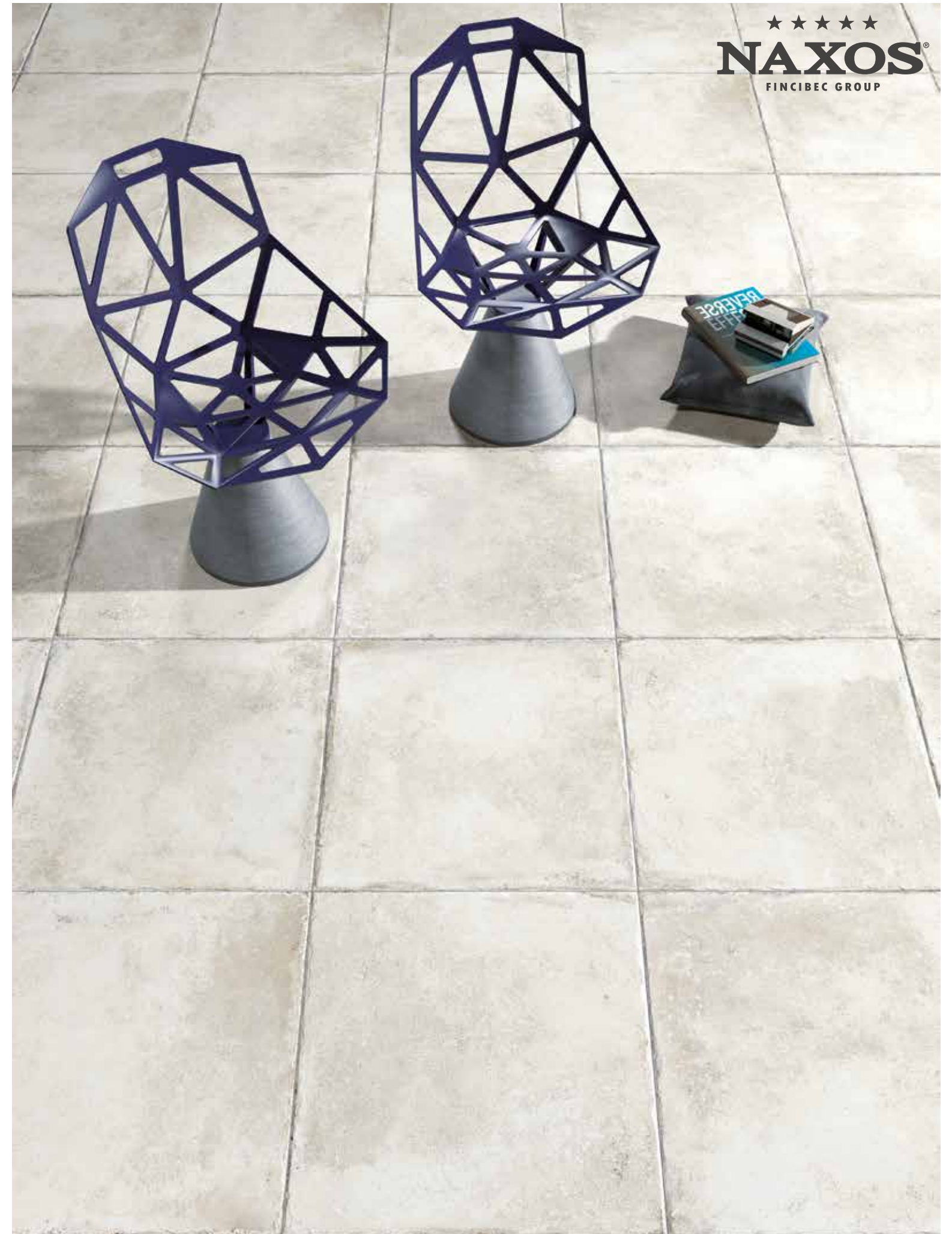


# OLIMPIA

gres fine porcellanato  
fine porcelain stoneware



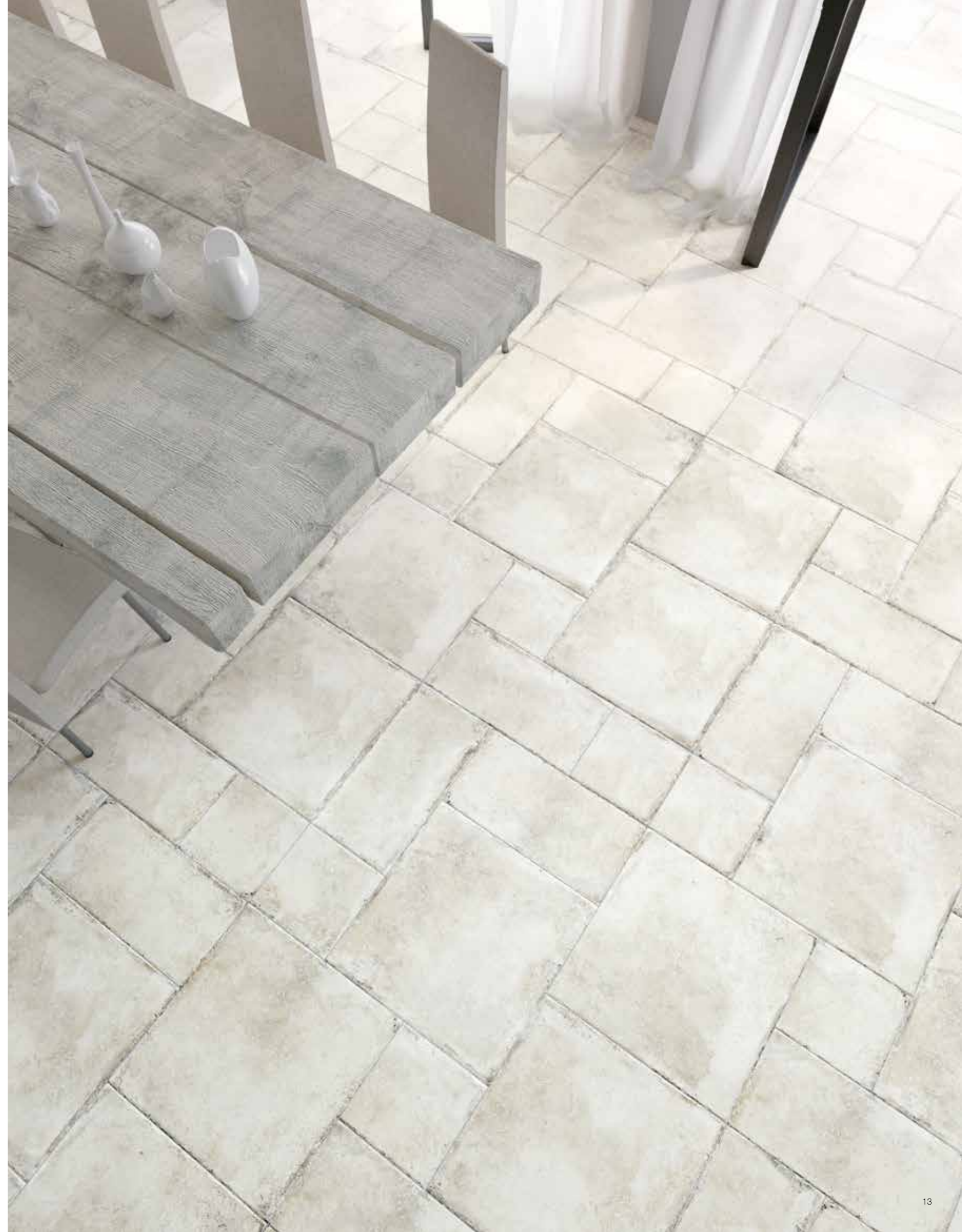
★★★★★  
**NAXOS**<sup>®</sup>  
FINCIBEC GROUP





Ambiente realizzato con: Olimpia 60x60 nat. - 30x60 nat. - 30x30 nat. - 50x100 grip  
Setting realized with: Olimpia 60x60 nat. - 30x60 nat. - 30x30 nat. - 50x100 grip



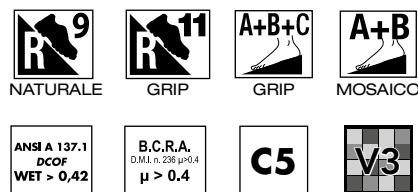
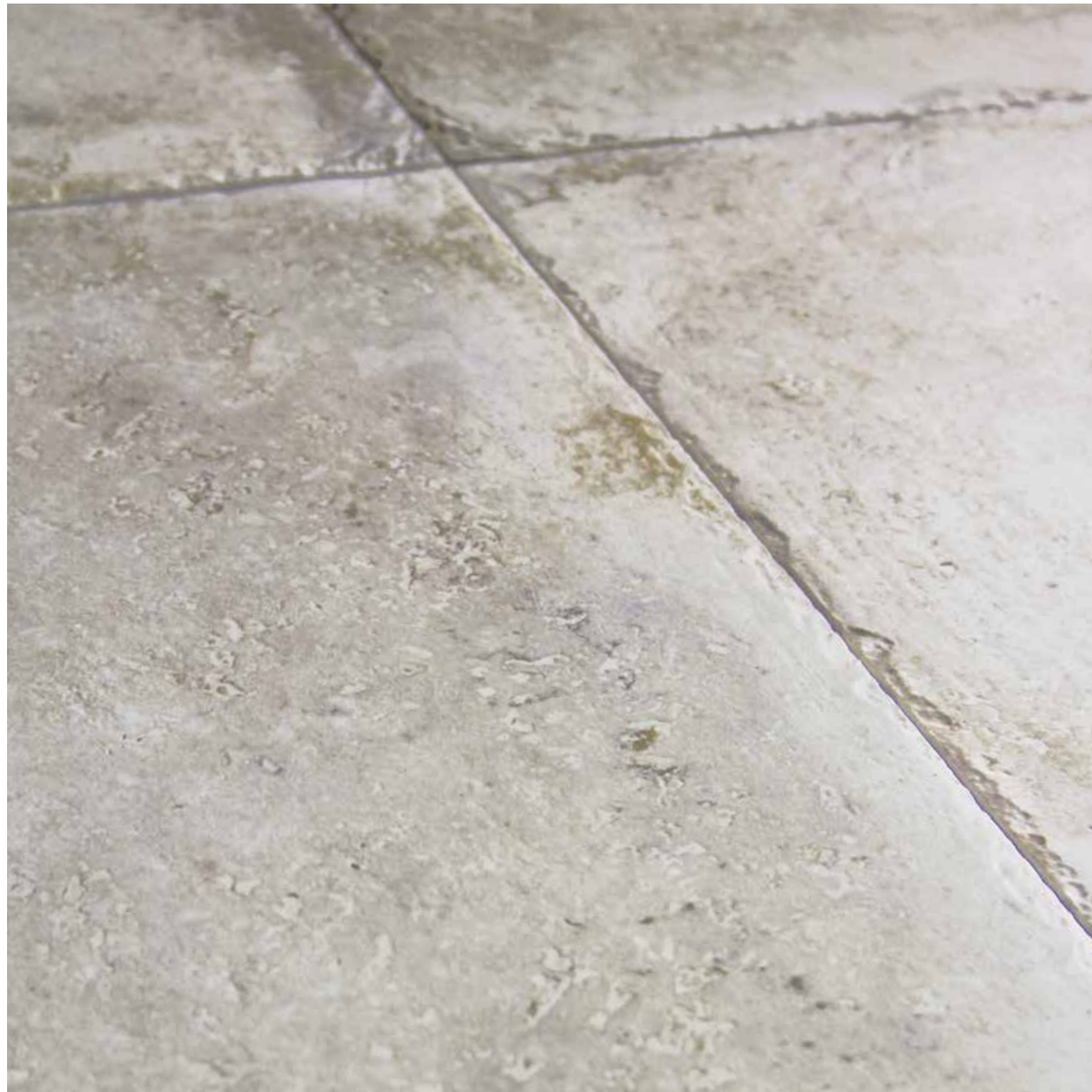




Ambiente realizzato con: Olimpia 50x100 grip  
Setting realized with: Olimpia 50x100 grip

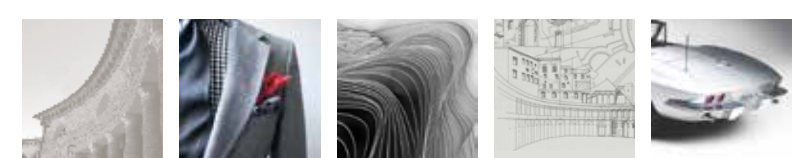
OLIMPIA  
gres fine porcellanato  
fine porcelain stoneware





# EFESO

gres fine porcellanato  
fine porcelain stoneware

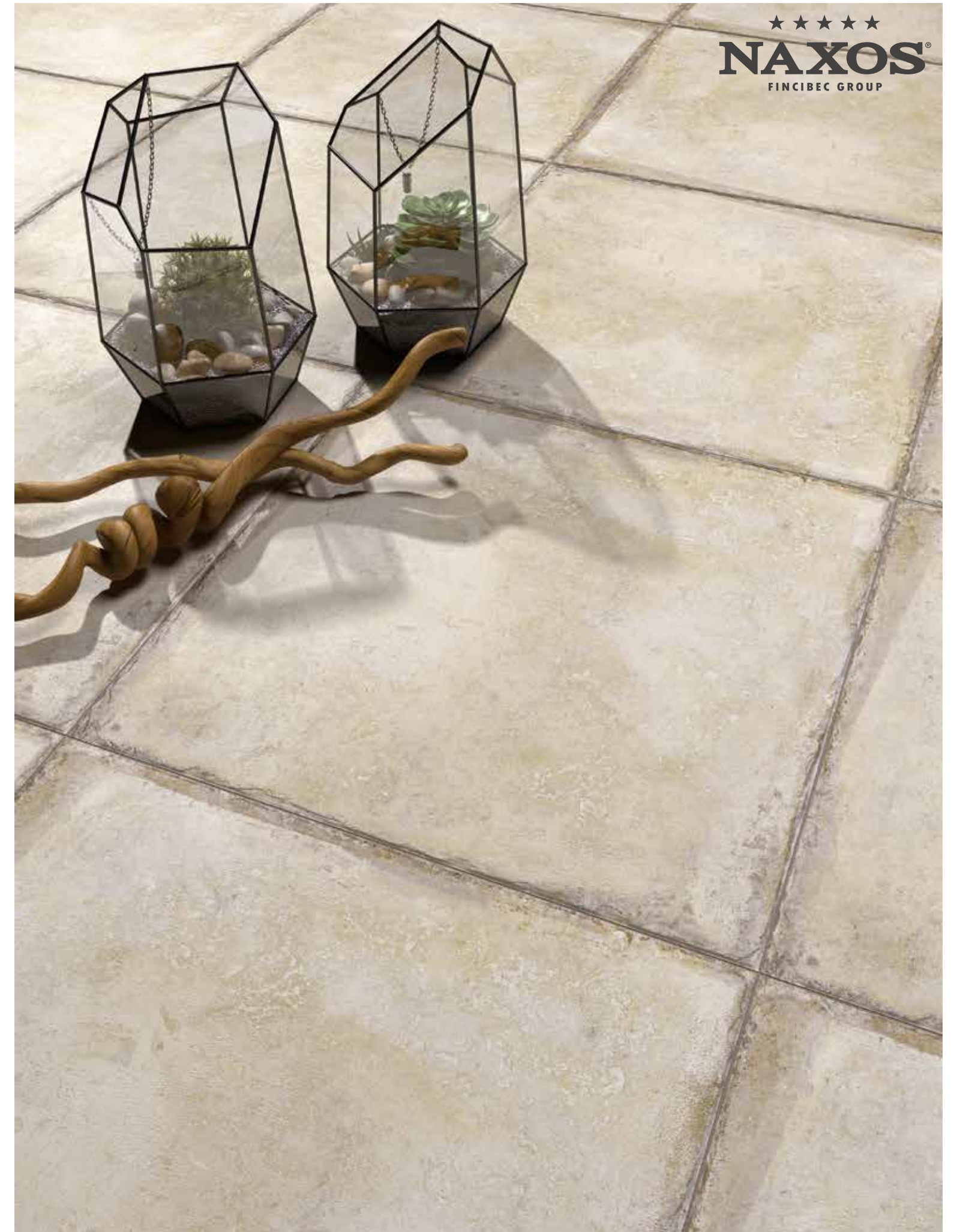
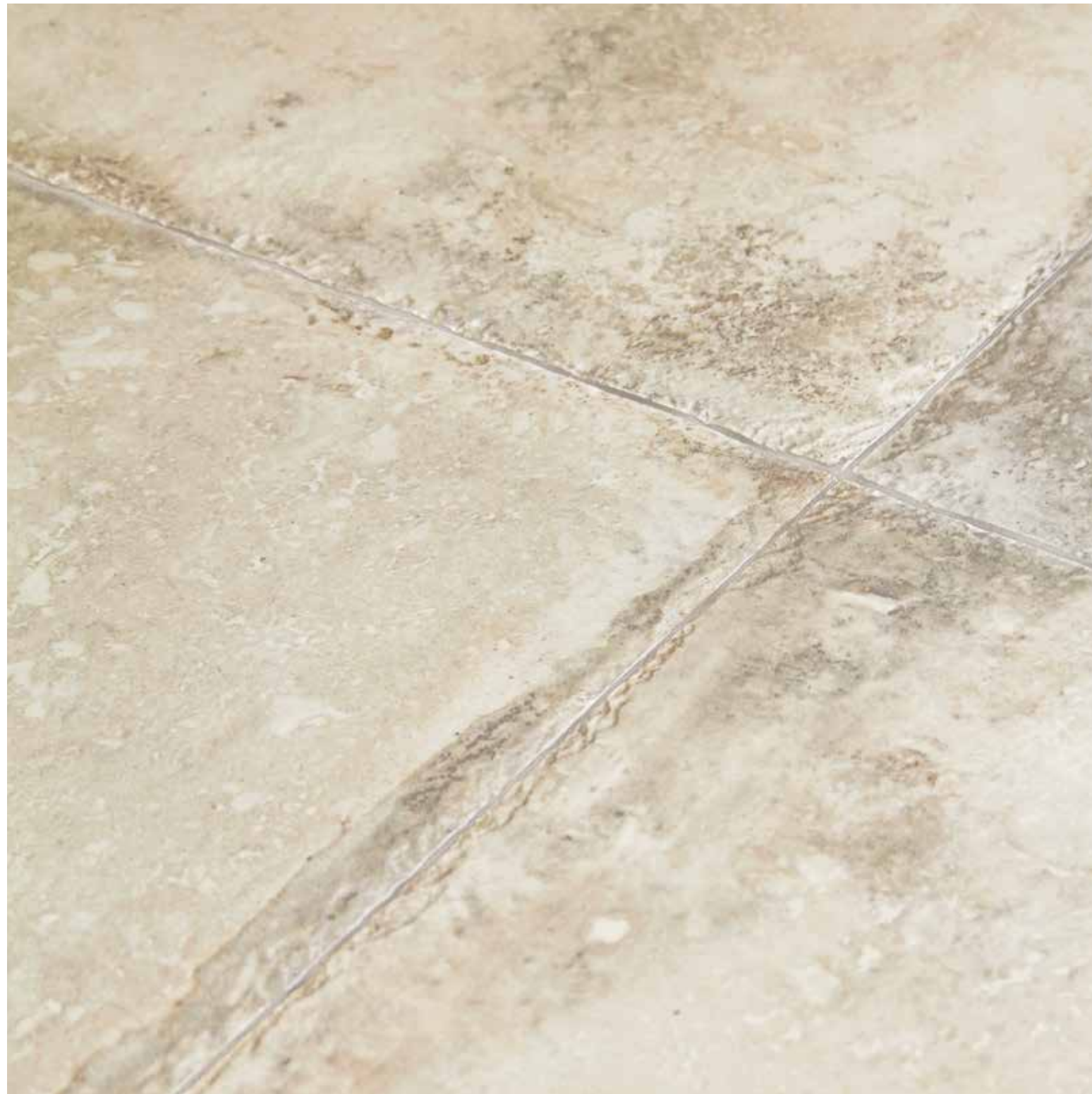




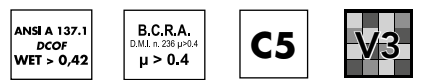
# EFESO

gres fine porcellanato  
fine porcelain stoneware





★★★★★  
**NAXOS**<sup>®</sup>  
 FINCIBEC GROUP



# PERGAMO

gres fine porcellanato  
 fine porcelain stoneware

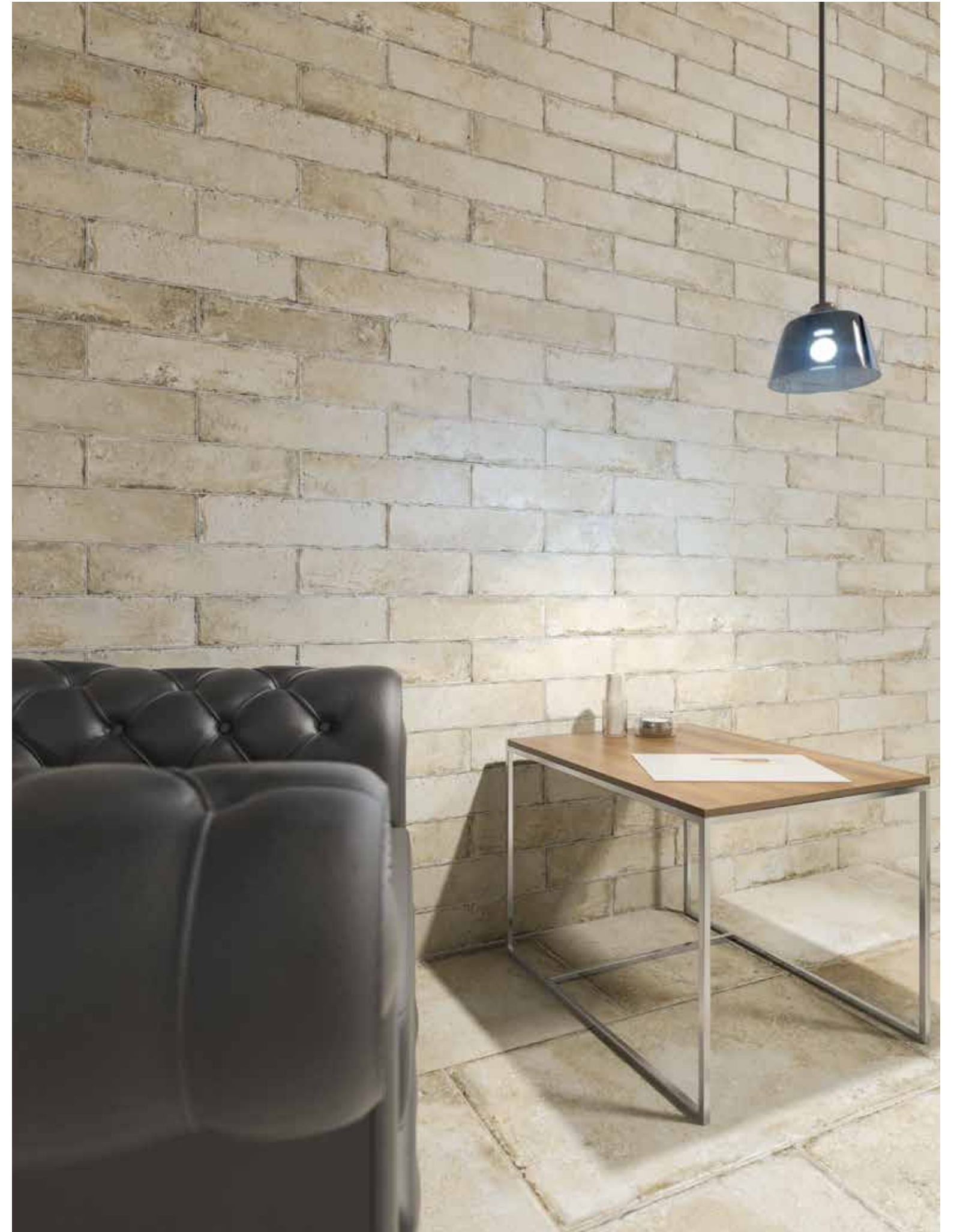




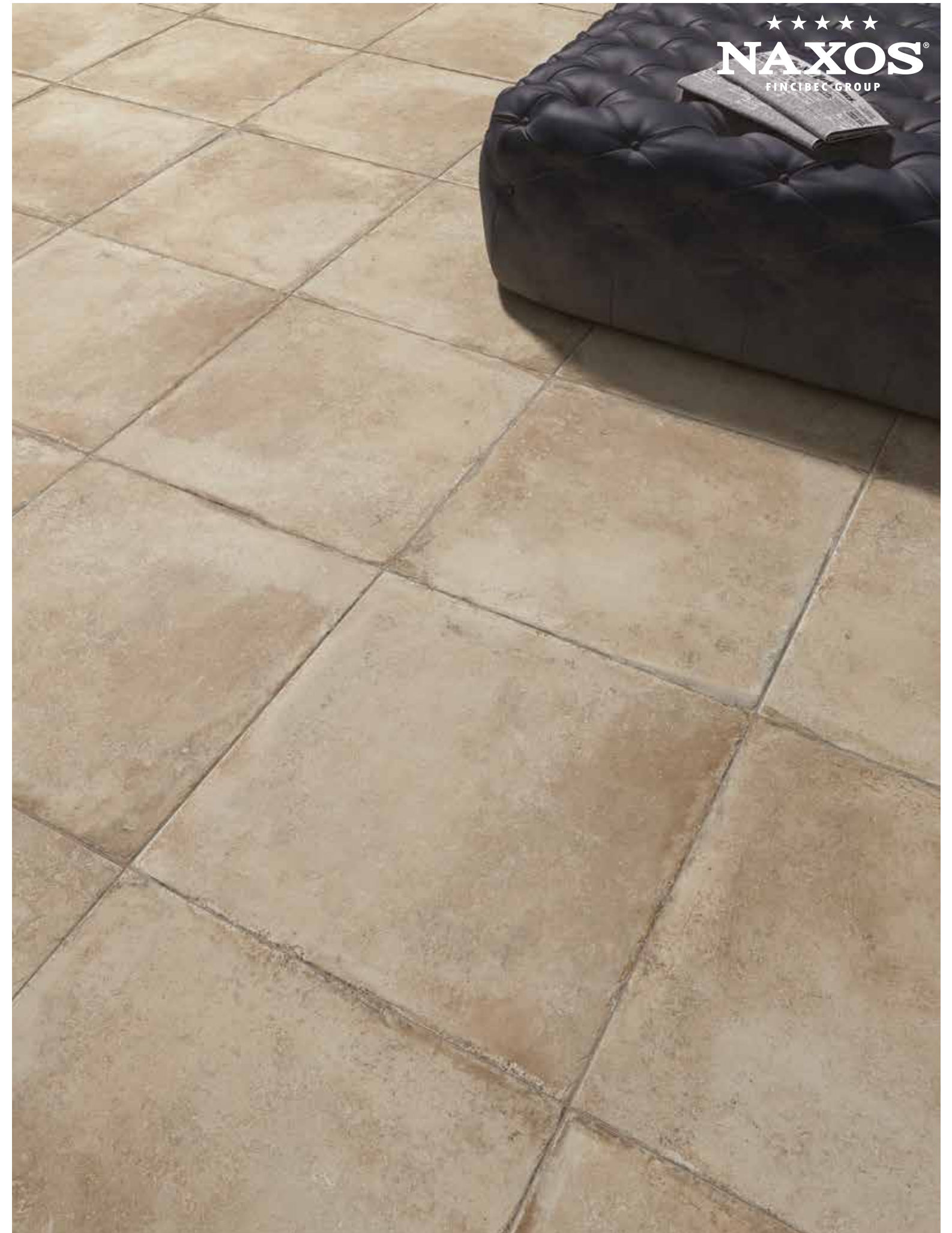


# PERGAMO

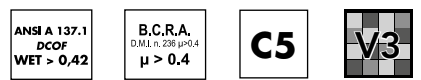
gres fine porcellanato  
fine porcelain stoneware







★★★★★  
**NAXOS**<sup>®</sup>  
 FINCIBEC GROUP



# DELFI

gres fine porcellanato  
 fine porcelain stoneware







# DELFI

gres fine porcellanato  
fine porcelain stoneware





E S E D R A

gres fine porcellanato  
fine porcelain stoneware



EFESO



OLIMPIA



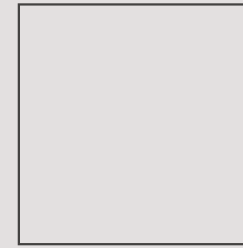
PERGAMO



DELFI

★★★★★  
**NAXOS**  
FINCIBEC GROUP

## SUPERFICIE NATURALE natural surface



60x60 - 24"x24"  $\nabla$  10 mm

91512 Olimpia  
91513 Pergamo  
91514 Efeso  
91515 Delfi

■ 93



30x60 - 12"x24"  $\nabla$  10 mm

91508 Olimpia  
91509 Pergamo  
91510 Efeso  
91511 Delfi

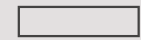
■ 81



30x30 - 12"x12"  $\nabla$  10 mm

93030 Olimpia  
93032 Pergamo  
93029 Efeso  
93027 Delfi

■ 75



7,3x30 - 3"x12"  $\nabla$  10 mm  
Mattoncino

91804 Olimpia  
91805 Pergamo  
91806 Efeso  
91807 Delfi

■ 166

## SUPERFICIE GRIP grip surface

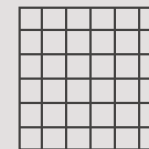


50x100 - 10"x40"  $\nabla$  10 mm

91886 Olimpia  
91887 Pergamo  
91888 Efeso

■ 129

## MOSAICI mosaics



4,7x4,7 - 1,8"x1,8"  
Mosaico su rete burattato . 30x30 - 12"x12"

91701 Olimpia  
91702 Pergamo  
91700 Efeso  
91699 Delfi

■ 193

## PEZZI SPECIALI special pieces



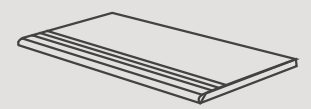
7,2x60 - 3"x24"  
Battiscopa  
naturale . natural

● 13



7,2x30 - 3"x12"  
Battiscopa  
naturale . natural

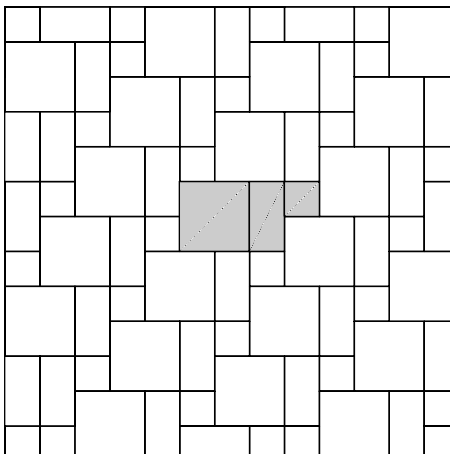
● 5



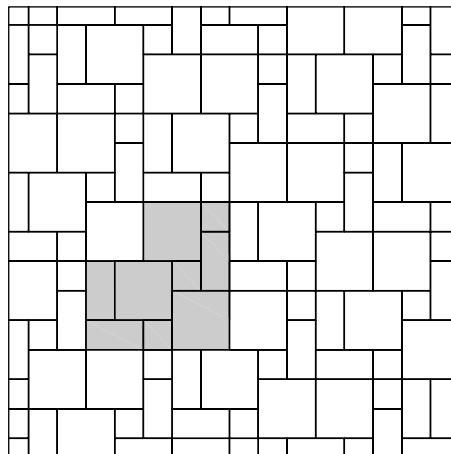
30x60 - 12"x24"  
Gradino  
naturale . natural

● 64

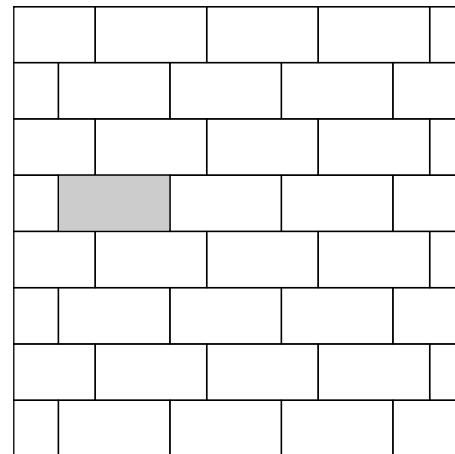
# SCHEMI DI POSA how to lay



	60x60	57,1%
	30x60	28,6%
	30x30	14,3%



	60x60	57,1%
	30x60	28,6%
	30x30	14,3%



	50x100	100%
--	--------	------

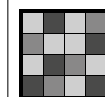
# VARIAZIONI CROMATICHE colours variations



**V1** Aspetto uniforme  
Even appearance



**V2** Lieve variazione  
Light variation



**V3** Media variazione  
Medium variation



**V4** Intensa variazione  
Strong variation

È indispensabile all'atto della posa, prelevare le piastrelle da più confezioni.

It is necessary to take the tiles from several different boxes when laying them.

# CATEGORIE D'IMPIEGO use classes



**C1** Piastrelle da pavimento consigliate per traffico leggero  
Floor tiles recommended for light traffic



**C2** Piastrelle da pavimento consigliate per traffico medio-leggero  
Floor tiles recommended for medium-light traffic



**C3** Piastrelle da pavimento consigliate per traffico medio  
Floor tiles recommended for medium traffic



**C4** Piastrelle da pavimento consigliate per traffico medio-pesante  
Floor tiles recommended for medium-heavy traffic



**C5** Piastrelle da pavimento consigliate per impieghi con forti sollecitazioni  
Floor tiles recommended for highly stressed uses


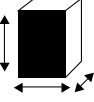

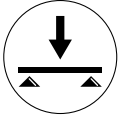



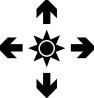






# IMBALLI packaging



	60x60	50x100	30x60	30x30 mosaico	30x30	7,3x30 mattoncino
Pc.	3	2	6	11	13	46
M <sup>2</sup>	1,08	1	1,08	1	1,17	1,007
Kg	23	21	22,50	20,3	22	20,5



	60x60	50x100	30x60	30x30 mosaico	30x30	7,3x30 mattoncino
Colli boxes	40	48	48	36	50	60
M <sup>2</sup>	43,2	48	51,84	36	58,5	60,42
Kg	920	1008	1080	730,8	1100	1230

 <b>*****</b> <b>NAXOS</b> <small>FINCIBEC GROUP</small> ISO 13006B1a EN 14411/G	<b>CARATTERISTICHE TECNICHE</b> TECHNICAL DATA CARACTÉRISTIQUES TECHNIQUES TECHNISCHE DATEN CARACTERÍSTICAS TÉCNICAS	<b>TIPO DI PROVA</b> STANDARD OF TEST NORME DU TEST TESTNORM TIPO DE PRUEBA	<b>VALORE NAXOS</b> NAXOS STANDARDS VALEUR NAXOS ERGEBNIS NAXOS VALOR DE NAXOS
	<b>DIMENSIONI</b> SIZES DIMENSIONS ABMESSUNGEN DIMENSIONES	ISO 10545.2	<b>A NORMA</b> ACCORDING TO NORM SELON LA NORME NACH NORM CONFORME
	<b>ASSORBIMENTO D'ACQUA</b> WATER ABSORPTION ABSORPTION D'EAU WASSERAUFNAHME ABSORCIÓN DEL AGUA	ISO 10545.3	$\leq 0,2\%$
	<b>SFORZO DI ROTTURA</b> MODULUS OF RUPTURE EFFORT DE RUPTURE BRUCHLAST ESFUERZO DE ROTURA	ISO 10545.4	$S \geq 1300 \text{ N}$
	<b>RESISTENZA A FLESSIONE</b> BREAKING STRENGTH RESISTANCE A LA FLEXION BIEGEFESTIGKEIT RESISTENCIA A LA FLEXIÓN	ISO 10545.4	$R \geq 35 \text{ N/MM}^2$
	<b>RESISTENZA AGLI SHOCK TERMICI</b> RESISTANCE TO THERMAL SHOCK RESISTANCE AUX CHOQUES THERMIQUE TEMPERATURWECHSELBESTÄNDIGKEIT RESISTENCIA A LOS CAMBIOS TÉRMICOS	ISO 10545.9	<b>GARANTITA</b> GUARANTEED GARANTIE GARANTIERT GARANTIZADA
	<b>RESISTENZA AL GELO</b> FROST RESISTANCE RESISTANCE AU GEL FROSTBESTÄNDIGKEIT RESISTENCIA A LA HELADA	ISO 10545.12	<b>GARANTITA</b> GUARANTEED GARANTIE GARANTIERT GARANTIZADA
	<b>COEFFICIENTE DI DILATAZIONE TERMICA LINEARE</b> THERMAL EXPANSION COEFFICIENT COEFFICIENT DE DILATATION THERMIQUE LINEARE WÄRMEAUSDEHNUNGSKOEFFIZIENT COEFICIENTE DE DILATACIÓN TERMICA LINEAR	ISO 10545.8	<b>A NORMA</b> ACCORDING TO NORM SELON LA NORME NACH NORM CONFORME
	<b>RESISTENZA ALL'ATTACCO CHIMICO</b> CHEMICAL RESISTANCE RESISTANCE CHIMIQUE BESTÄNDIGKEIT GEGEN CHEMICALIEN RESISTENCIA AL ATAQUE QUIMICO	ISO 10545.13	<b>A NORMA</b> ACCORDING TO NORM SELON LA NORME NACH NORM CONFORME
	<b>RESISTENZA ALLE MACCHIE</b> STAINS RESISTANCE RESISTANCE AUX TACHES FLECKENBESTÄNDIGKEIT RESISTENCIA A LAS MANCHAS	ISO 10545.14	<b>A NORMA</b> ACCORDING TO NORM SELON LA NORME NACH NORM CONFORME
	<b>RESISTENZA ALLO SCIVOLAMENTO</b> SLIP RESISTANCE RESISTANCE AU GLISSEMENT RUTSCHFESTIGKEIT RESISTENCIA AL DESLIZAMIENTO	<b>ANSI A 137.1 - DCOF</b> (Coefficiente di attrito dinamico) (Coefficient of kinetic friction)	<b>WET &gt; 0,42 NAT. GRIP</b>
		<b>B.C.R.A. (D.M. 236 <math>\mu &gt; 0.4</math>)</b>	<b>CUOIO ASCIUTTO <math>\mu &gt; 0.4</math> NAT. GRIP</b> DRY LEATHER
		<b>DIN 51130</b>	<b>GOMMA BAGNATA <math>\mu &gt; 0.4</math> NAT. GRIP</b> WET RUBBER
		<b>DIN 51097</b>	<b>A+B+C GRIP</b> <b>A+B MOSAICO</b>

Escluso pezzi speciali ed elementi decorativi With the exception of special pieces and decors  
 Per ulteriori informazioni consultare le schede tecniche dal sito [www.naxos-ceramica.it](http://www.naxos-ceramica.it) For further inquiries, refer to the data sheets on the web-site [www.naxos-ceramica.it](http://www.naxos-ceramica.it)

**Note Notes**

I prodotti possono essere modificati da Fincibec senza preavviso, respingendo ogni responsabilità su possibili danni diretti o indiretti causati da potenziali modifiche.  
 Fincibec reserves the right to modify its products without prior notice and cannot be held liable for direct or indirect damage caused by such modifications.

Verificare sempre la correttezza delle informazioni e dei dati relativi a codici, imballaggi e pesi, consultando il listino prezzi in vigore.  
 Always refer to the price list in force to ensure correct information and data on codes, packaging, and weight.

Le tonalità dei colori riportate nel catalogo sono indicative.  
 The colours shades, reported on the catalogue, are indicative.



FINCIBEC S.p.A.  
Uffici Comm.li, Stabilimento:

Strada Statale 569, 169  
41014 Solignano (MO) Italy

Magazzino:  
Strada Statale 569, 187  
41014 Solignano (MO) Italy  
Tel. +39 059.748811  
Fax +39 059.797376  
[www.naxos-ceramica.it](http://www.naxos-ceramica.it)  
[info@naxos-ceramica.it](mailto:info@naxos-ceramica.it)

Amministrazione:  
Via Valle d'Aosta, 47  
41049 Sassuolo (MO) Italy  
Tel. +39 0536.861300  
Fax +39 0536.861351  
[www.fincibec.it](http://www.fincibec.it)  
[info@fincibec.it](mailto:info@fincibec.it)

GRUPPO FIRE - Fire S.r.l

