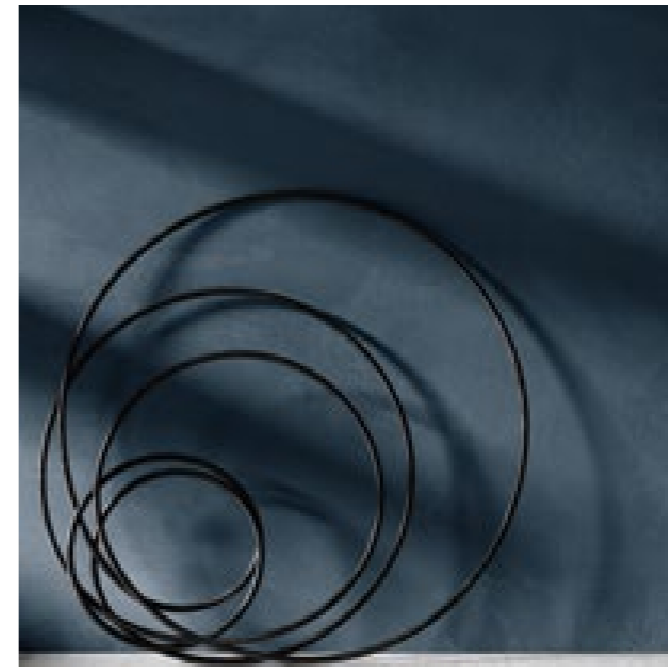


SET



ceramica
SANT'AGOSTINO

SET



I linguaggi contemporanei, non solo del progetto ma della stessa vita quotidiana, sono sempre più fluidi, nei valori estetici, sociali, economici. E nulla è più eclettico della materia ceramica evoluta, che sembra giocare liberamente - in un'alchimia di sintesi fra derivazioni, incroci e composizioni - con le altre materie: studiandole, interpretandole e plasmandole per renderle più adatte ad ogni esigenza del costruire e dell'abitare contemporanei.

SET è una vera e propria fusione di materiali diversi - cemento: SET CONCRETE; cemento-tessuto: SET DRESS e SET TARTAN; cemento con marmo: SET GEM; vernice: SET WALL; legno: METROWOOD; decorazione: METROSIGNS - che si incrociano fino ad unirsi l'uno con l'altro per dare vita a piccoli capolavori ceramici.

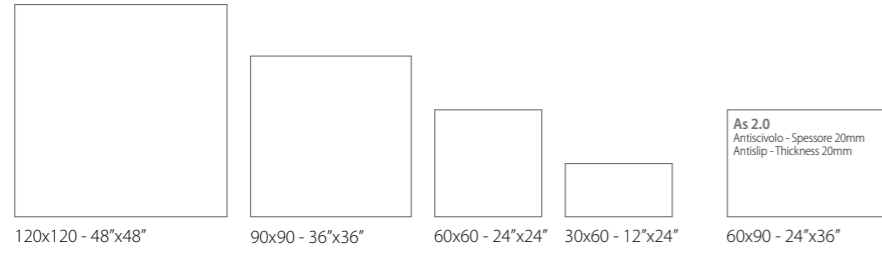
The contemporary languages, not only of the project but the same everyday life, are increasingly fluid, in the aesthetic values, social, economic. Nothing is more eclectic than the evolved ceramic matter, which seems to play free - in an alchemy of synthesis between derivations, intersections and compositions - with other materials: by studying, interpreting and shaping to make them more suitable for all the requirements of contemporary building and living.

SET is a true fusion of different materials - cement: SET CONCRETE; cement-fabric: SET DRESS and SET TARTAN; cement with marble: SET GEM; paint: SET WALL; wood: METROWOOD; decoration: METROSIGNS - that intersect to join up one to the other and give life to small ceramic masterpieces.

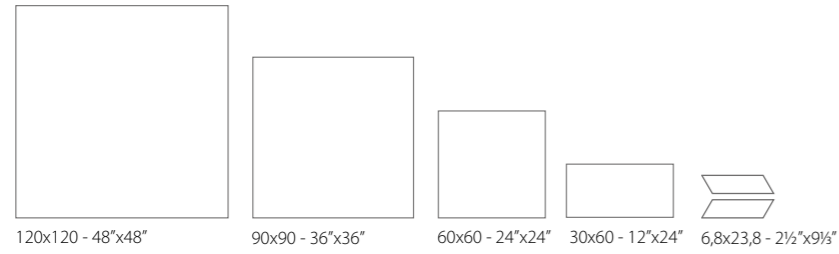


FORMATI • SIZES

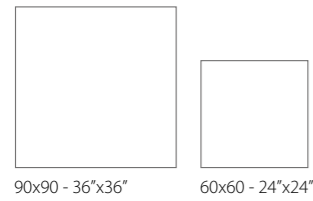
SET CONCRETE



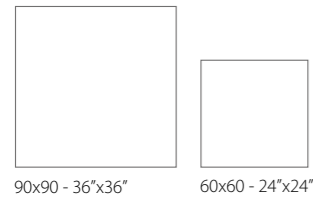
SET DRESS



SET GEM



SET TARTAN

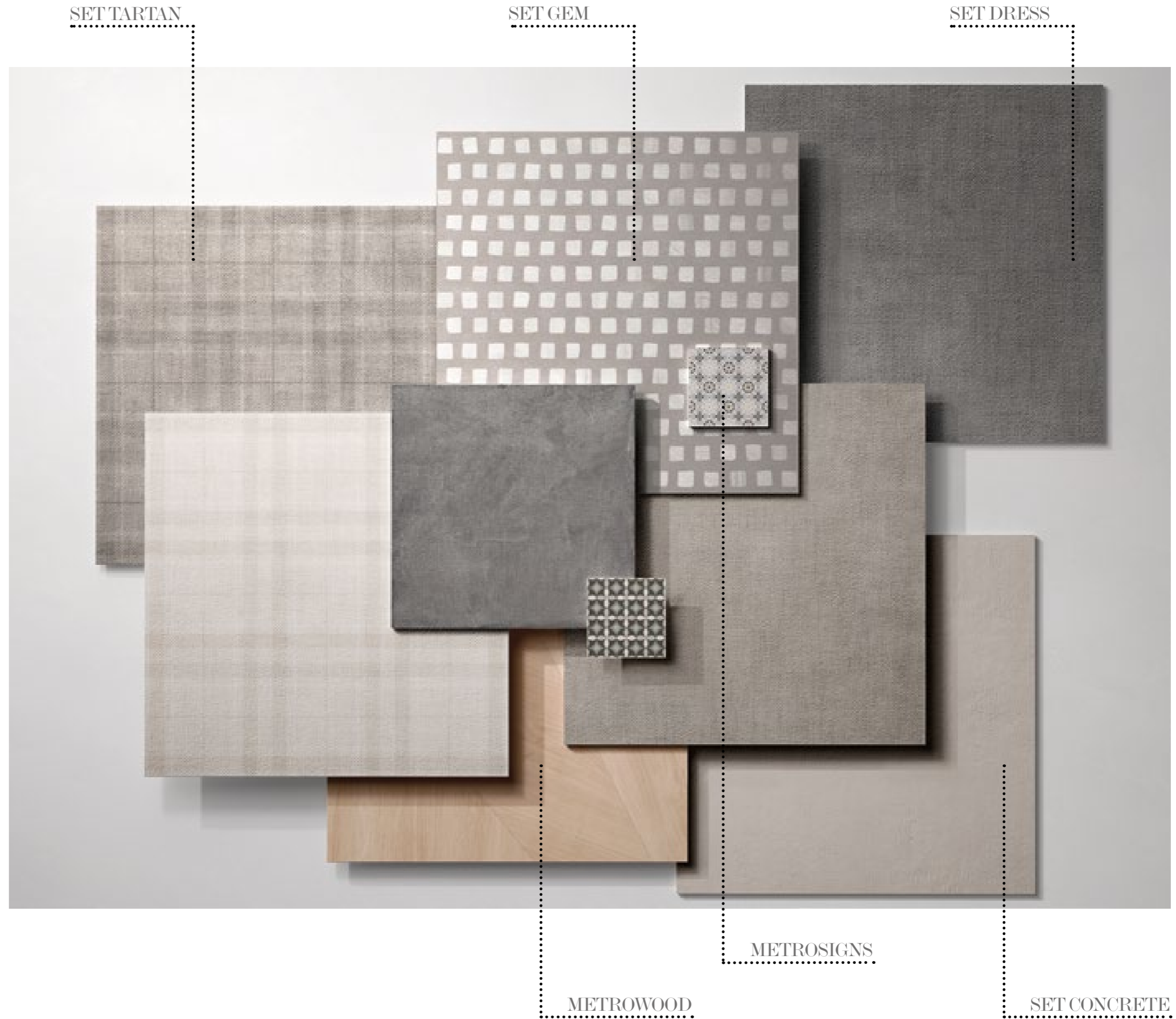


METROWOOD



Gres Porcellanato Rettificata

Porcelain Rectified
 Feinsteinzeug Kalibriert
 Grès cérame Rectifié
 Керамогранит Ректифицированная





LAVORAZIONE MANUALE DI CASSERI DI CEMENTO

6

Manual processing of
concrete structures

Manuelle Verarbeitung
von Zementverschaltungen

Travail artisanal du béton
brut de coffrage

Ручная обработка
цементных опалубок

Set Concrete Dark 120120



7



ARMATURA DI UN TAPPETO A RIGHE DI COTONE IMMERSO NEL CEMENTO

10

The weft of entwined stripes of a
cotton carpet set in concrete

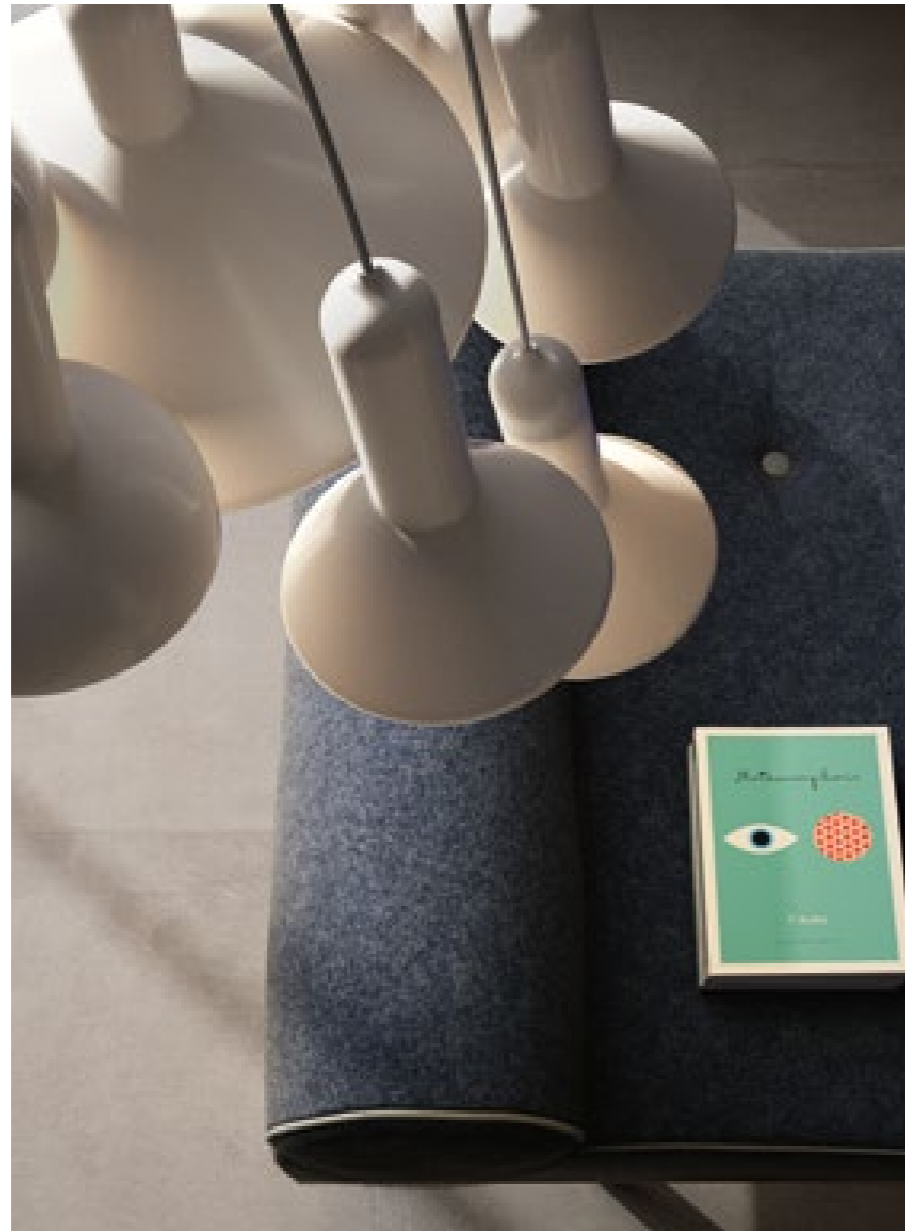
Bindung eines teppichs mit
Baumwollstreifen in zement getauchtn

Armure d'un tapis a rayures de coton
immerge' dans le beton

Армирование х/б подложкой в
полоску, погружённой в цемент

Set Dress Dark 120120





Set Concrete Grey 9090
Wall / Set Dress Grey 9090

L'ARTE DI COMPORRE IL SOFISTICATO EQUILIBRIO DELLE MATERIE NELLO SPAZIO CONTEMPORANEO

14

The art of creating a sophisticated balance of materials in contemporary space

Die Kunst, ein ausgeklügeltes Gleichgewicht zwischen den Rohstoffen herzustellen in zeitgenössischer Umgebung

L'art de composer un sophistiqué équilibre des matières dans l'espace contemporain

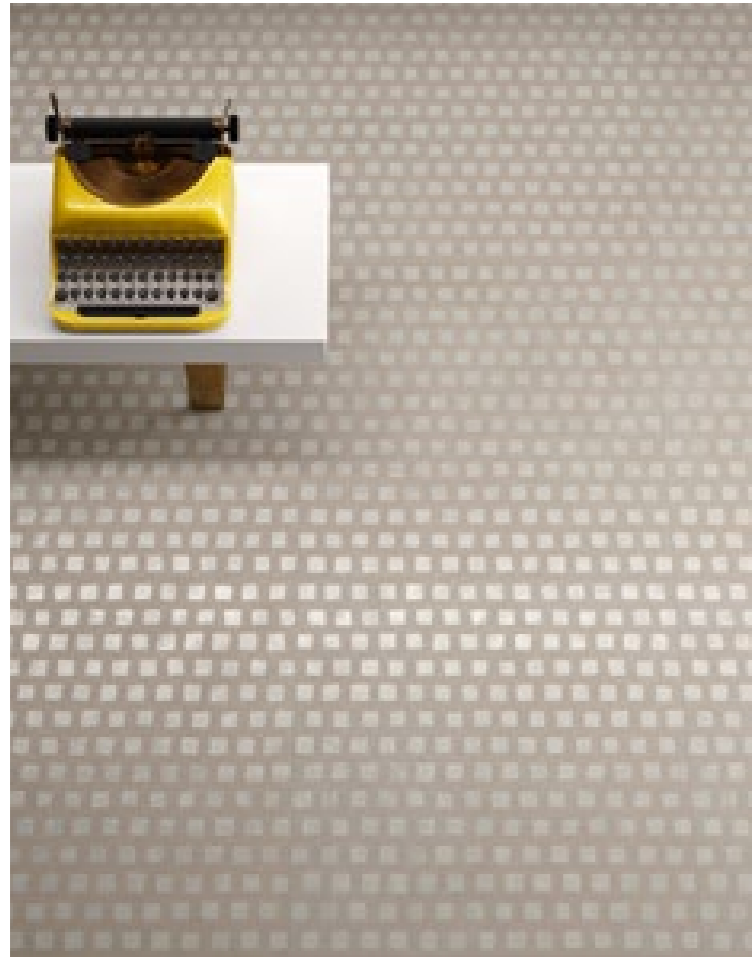
Искусство создавать изысканную гармонию материалов в современном пространстве

Set Concrete Pearl 9090

Wall / Set Gem Pearl 9090, Set Concrete Pearl 9090



15



> Set Gem Pearl 9090
Wall / Metrowood Natural 9090,
Bianco Lasa 60120 Kry (THEMAR Collection)





< Set Gem Pearl 9090
 Wall / Set Concrete Pearl 9090,
 Bianco Lasa 60120 Kry (THEMAR Collection)



Set Concrete Grey 120120
Wall / Set Concrete Grey 120120, Metrowood Natural 9090



Metrowood Natural 9090

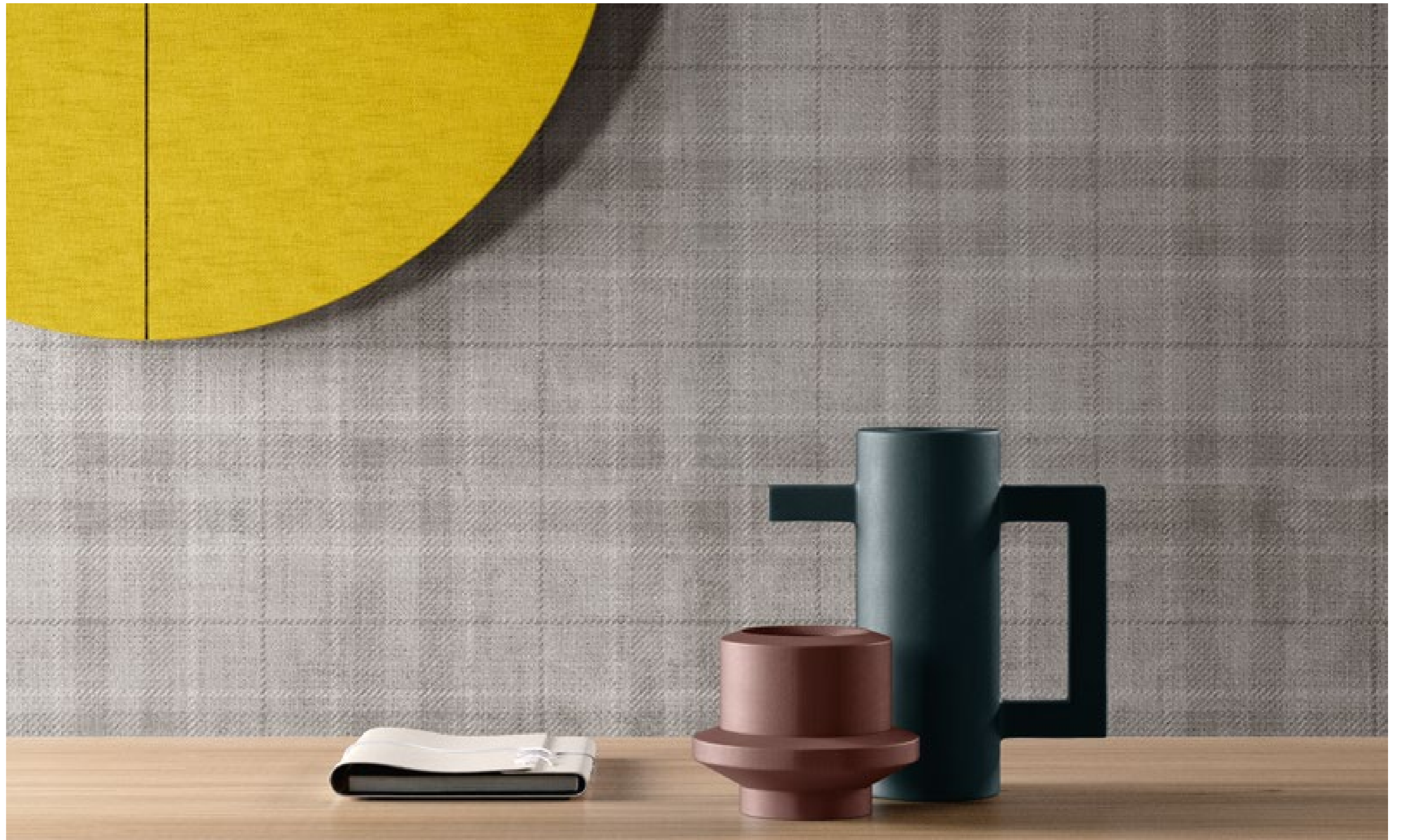
> Set Concrete Grey 120120





Set Tartan Grey 9090

Wall / Set Tartan Grey 9090, Set Concrete Grey 9090



Set Tartan Grey 9090



Set Tartan White 9090



> Set Tartan White 9090



Set Concrete Pearl 9090



> Set Concrete Pearl 9090

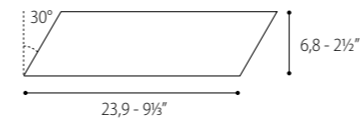
Wall / Set Wall White 1590



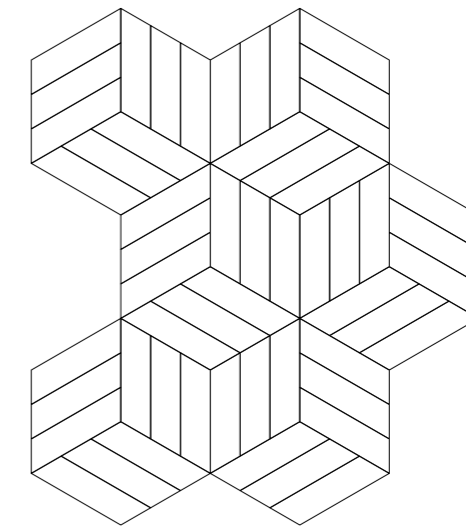
Set Concrete Dark 6060

Wall / Set Dress Pearl Chevron, Set Dress White Chevron

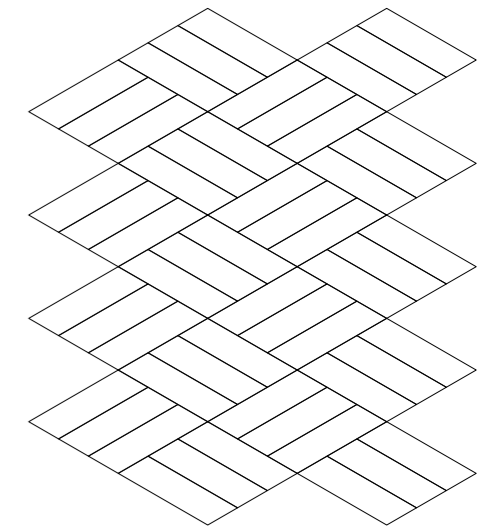
| Set Dress Chevron



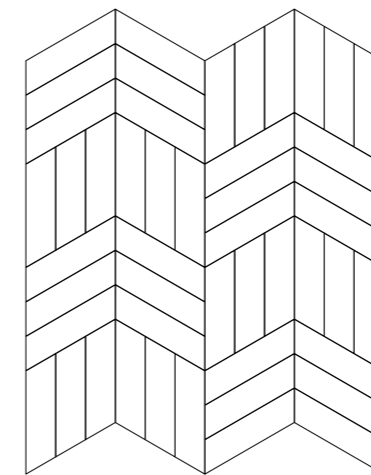
01



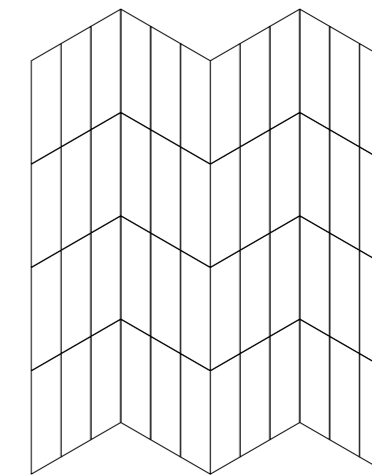
02



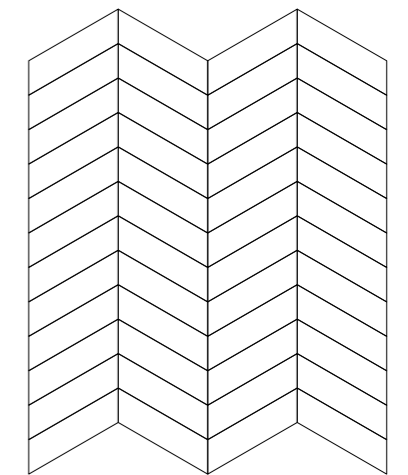
03



04



05



Lo spirito di prodotto ci guida ad esplorare le vie del design d'interni, incrociandole con la ricchezza di forma e sostanza dei volti sempre nuovi e diversi di una materia universale come la ceramica.

The product spirit takes us to explore the paths of interior design, crossing them with the richness in form and substance of the always new and different faces of a universal material like ceramics.

Durch unser Produktbewusstsein ergründen wir die Möglichkeiten des Innen-Designs denen wir mit stets neuartigem Formenreichtum und äußerlicher Substanz eines universellen Stoffes wie Keramik begegnen.

L'esprit du produit nous conduit à la recherche des chemins du design d'intérieur, en le mélangeant avec la richesse des formes et des éléments, toujours nouveaux et différents, d'une matière universelle comme la céramique.

Сама сущность изделия побуждает нас открывать всё новые пути интерьерного дизайна, скрещивая их с богатством форм и содержанием всегда новых и разных лицевых поверхностей такого универсального материала, как керамика.

PATCHWORK DI CEMENTINE CON 45 DISEGNI DIVERSI PER DECORARE A PAVIMENTO E PARETE OGNI TIPO DI AMBIENTE

34

Mix of cementine with 45 different patterns to decorate floor and wall in any kind of environment

Zement-Patchwork mit 45 verschiedenen Designs zur Dekoration von Boden und Wand jede Art von Umgebung

Combinaison de cementine avec 45 dessins pour décorer le sol et le mur de tout type de pièce

Лоскутная техника пэчворк в глазури с 45 разными рисунками для декорирования пола и стен в любой среде

Metrosigns

Wall / Set Dress Pearl 9090



35



Set Dress White 9090

> Set Dress White 9090

Wall / Set Dress White 9090, Metrosigns





Metrowood Natural 9090, Set Concrete White 3060

Floor / Metrosigns



Set Concrete Pearl 3060 , Set Wall White 1590

Floor / Metrowood Natural 9090

AS 2.0

40



Set Concrete Dark 6090 As 2.0

41



Set Concrete Pearl 6090 As 2.0

AS 2.0

Antiscivolo	Antislip	Trittsicher	Antidérapant	Противоскользящий
Spessore 20 mm	Thickness 20 mm	Stärke 20 mm.	Épaisseur 20 mm	Толщина 20 ММ
Resistente agli sbalzi termici	Resistant to thermal shock	Unempfindlich gegen Temperaturschwankungen	Résistant aux chocs thermiques	Устойчивый к перепадам температур
Ingelivo - Ignifugo	Frost resistant - Fire resistant	Frostsicher - Feuerfest	Ingélif - Résistant au feu	Морозостойкий
Inalterabile nel tempo	Time resistant	Zeitbeständig (lange Lebensdauer)	Inaltérable dans le temps	Огнеупорный
Facilissimo da posare	Easy to lay	Leichte Verlegung	Mise en œuvre très simple	Долговечный
Nel caso di posa a secco è semplice da riposizionare o rimuovere, non servono lavori di muratura	In case of dry tiling it's easy to replace or remove, no walling	Bei der trockenen Verlegung einfach zu positionieren oder zu entfernen, es sind keine Maurerarbeiten erforderlich	Dans le cas de pose à sec est facile à replacer ou enlever, ils ne sont pas nécessaires des travaux de maçonnerie	Простой в укладке: при укладке сухим методом его легко установить и снять, без кладочного раствора.
Pavimentazioni sopraelevate *	Raised floors *	Doppelböden *	Pose sur plots *	Мощение на приподнятом основании *

42



Rettificata
Rectified
Kalibriert
Rectifié
Ректифицированная

60x90 - 24"x36"



Posa a secco su erba
Dry laying on grass
Trockene Verlegung auf Grass
Pose sur pelouse
Сухая укладка на травяной газон



Posa a secco su ghiaia
Dry laying on gravel
Trockene Verlegung auf Kies
Pose sur gravillon
Сухая укладка на щебень



Posa a secco su sabbia
Dry laying on sand
Trockene Verlegung auf Sand
Pose sur sable
Сухая укладка на песок



Pavimentazioni sopraelevate
Raised floors
Doppelböden
Pose sur plots
Мощение на приподнятом основании



43

*** AVVERTENZE PER LA POSA SOPRAELEVATA**
Il formato 60x90 in 20 mm di spessore è ritenuto idoneo per la posa su massetto, su ghiaia, su sabbia, su erba, o su supporti ad una altezza massima di 2 cm utilizzando 6 supporti per lastra in modo da distribuire uniformemente i carichi. Per una sopraelevazione compresa tra i 2 ed i 10 cm è necessaria l'applicazione di una rete in fibra di vetro nella parte inferiore della lastra (foglio di acciaio zincato o rete plus per il formato 60x90). Una sopraelevazione superiore ai 10 cm è vincolata alla applicazione alla parte retrostante della lastra di un foglio di lamiera zincata.

*** WARNINGS FOR RAISED FLOOR LAYING**
Size 60x90 with 20 mm thickness is considered suitable for laying on screed, gravel, sand, grass or supports at a maximum height of 2 cm, using 6 supports per slab in order to distribute loads uniformly. For raised laying between 2 and 10 cm you must apply a fibre glass mesh to the rear of the slab (galvanised steel sheet or plus mesh for size 60x90). For raised floors of more than 10 cm, galvanised steel sheet must be applied to the rear of the slab.

*** HINWEISE FÜR DIE INSTALLATION ALS DOPPELBÖDEN**
Das Format 60x90 in 20 mm Stärke eist sich für die Verlegung auf Estrich, Kies, Sand, Gras oder Trägern mit einer maximalen Höhe von 2 cm, indem man 6 Stützen pro Platte verwendet, um die Lasten gleichmäßig zu verteilen. Für eine Verlegung in einer Höhe zwischen 2 und 10 cm muss ein Glasfasernetz auf der Unterseite der Platte angebracht werden (verzinkte Stahlfolie oder Plus-Netz beim Format 60x90). In einer Höhe über 10 cm darf nur verlegt werden, wenn man eine verzinkte Blechfolie auf der Rückseite der Platte anbringt.

*** MISES EN GARDE POUR LA POSE SURÉLEVÉE**
Le format 60x90 en 20 mm d'épaisseur est appropriés à la pose sur chape, gravier, sable, pelouse ou sur vérins à une hauteur maximum de 2 cm, en utilisant 6 vérins par plaque, de manière à répartir équitablement les charges. Pour une surélévation comprise entre 2 et 10 cm, il est nécessaire d'appliquer un filet en fibre de verre au dos de la plaque (feuille d'acier galvanisé ou filet « plus » pour le format de 60x90). Une surélévation de plus de 10 cm exige l'application d'une feuille de tôle galvanisée au dos de la plaque.

*** РЕКОМЕНДАЦИИ ПО УКЛАДКЕ ПЛИТ НА ФАЛЬШПОЛ**
Форматы плит 60x90 толщиной 20 мм считаются пригодными для укладки на стяжку, гравий, песок, траву или на основания высотой не более 2 см при использовании 6 стоек для каждой плиты для равномерного распределения нагрузок. Для поднятия уровня пола на высоту от 2 до 10 см необходимо приклеивать к нижней стороне плит сетку из стекловолокна (лист оцинкованной стали или сетку plus для формата 60x90). При поднятии уровня пола на высоту более 10 см обязательно следует крепить к нижней стороне плит лист из оцинкованной стали.

TECHNICAL INFORMATION

Gres porcellanato

Porcelain

Feinsteinzeug

Grès cérame

Керамогранит

Rettificato

Rectified

Kalibriert

Rectifié

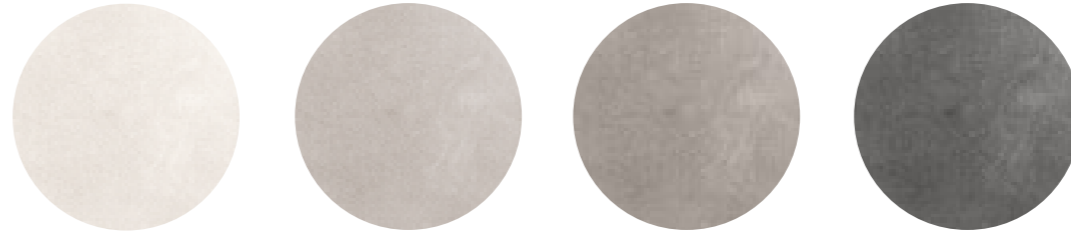
Ректифицированная



RET	V2		5	A+B	R10	ASTM	DOF		10mm	EN 14411 APPENDICE G Bla GL
As 2.0	RET	V2		5	A+B	R11		20mm	EN 14411 APPENDICE G Bla UGL	

Colori - Colours - Farben - Couleurs - Цвета

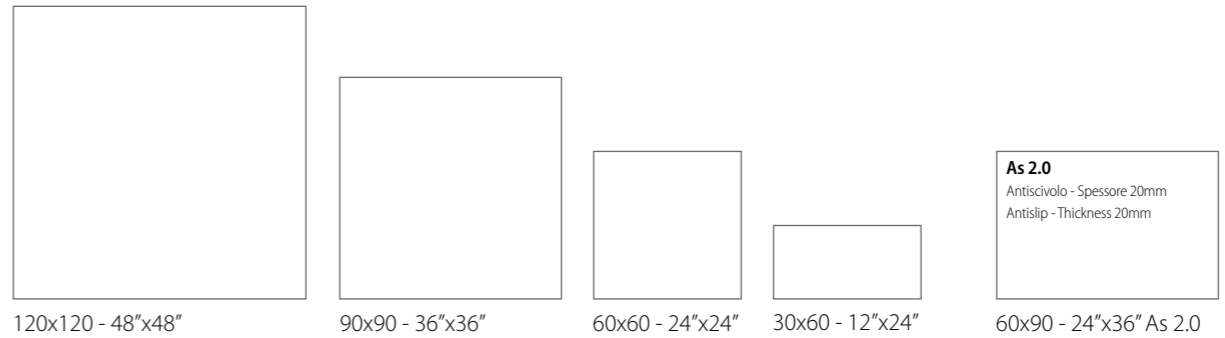
Set Concrete White Set Concrete Pearl Set Concrete Grey Set Concrete Dark



Set Concrete White 120120 Set Concrete White 9090 Set Concrete White 6060 Set Concrete White 3060	Set Concrete Pearl 120120 Set Concrete Pearl 9090 Set Concrete Pearl 6060 Set Concrete Pearl 3060	Set Concrete Grey 120120 Set Concrete Grey 9090 Set Concrete Grey 6060 Set Concrete Grey 3060	Set Concrete Dark 120120 Set Concrete Dark 9090 Set Concrete Dark 6060 Set Concrete Dark 3060
Set Concrete White 6090 As 2.0 Mosaico Set Concrete White	Set Concrete Pearl 6090 As 2.0 Mosaico Set Concrete Pearl	Set Concrete Grey 6090 As 2.0 Mosaico Set Concrete Grey	Set Concrete Dark 6090 As 2.0 Mosaico Set Concrete Dark

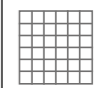
Formato Size Formate Format Форматы	Numero grafiche Number of patterns Grafische Nummer Nombre d'images Количество графических оформлений
120x120 - 48"x48"	30
90x90 - 36"x36"	40
60x60 - 24"x24"	55
30x60 - 12"x24"	110
60x90 - 24"x36" As 2.0	45

Formati - Sizes - Formate - Formats - Форматы



Su rete
On net
Auf Netz
Sur trame
Ha сетке

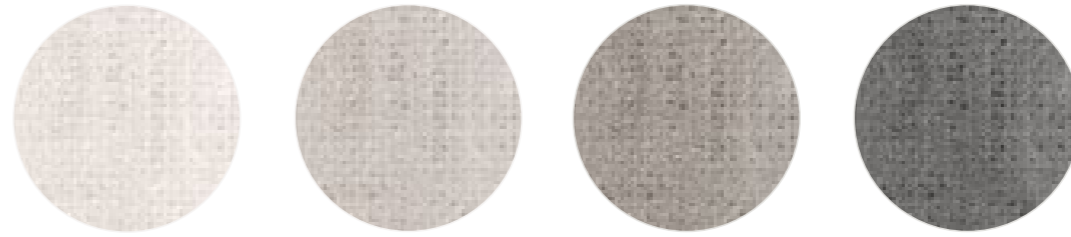
30x30 - 12"x12"



Mosaico Set Concrete

Colori - Colours - Farben - Couleurs - Цвета

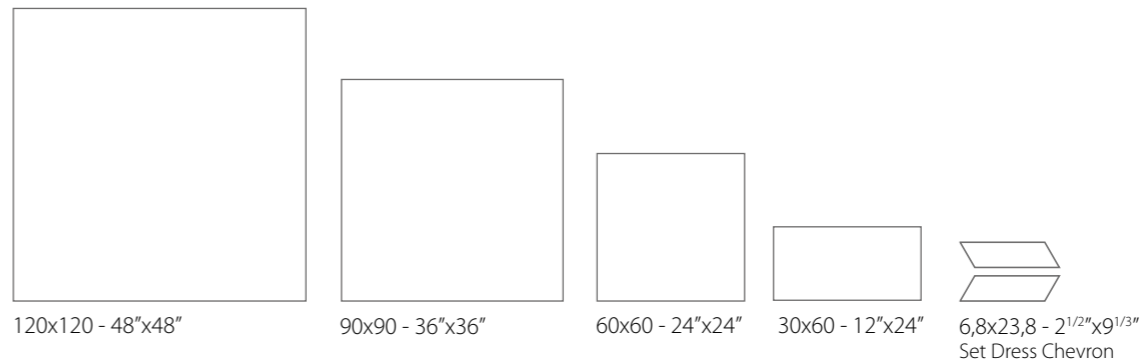
Set Dress White Set Dress Pearl Set Dress Grey Set Dress Dark



Set Dress White 120120 Set Dress White 9090 Set Dress White 6060 Set Dress White 3060	Set Dress Pearl 120120 Set Dress Pearl 9090 Set Dress Pearl 6060 Set Dress Pearl 3060	Set Dress Grey 120120 Set Dress Grey 9090 Set Dress Grey 6060 Set Dress Grey 3060	Set Dress Dark 120120 Set Dress Dark 9090 Set Dress Dark 6060 Set Dress Dark 3060
Set Dress White Chevron Mosaico Set Dress White	Set Dress Pearl Chevron Mosaico Set Dress Pearl	Set Dress Grey Chevron Mosaico Set Dress Grey	Set Dress Dark Chevron Mosaico Set Dress Dark

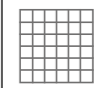
Formato Size Formate Format Форматы	Numero grafiche Number of patterns Grafische Nummer Nombre d'images Количество графических оформлений
120x120 - 48"x48"	30
90x90 - 36"x36"	40
60x60 - 24"x24"	55
30x60 - 12"x24"	110

Formati - Sizes - Formate - Formats - Форматы

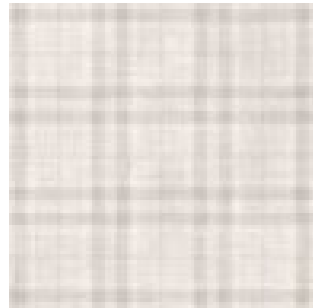


Su rete
On net
Auf Netz
Sur trame
Ha сетке

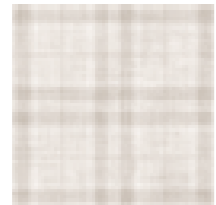
30x30 - 12"x12"



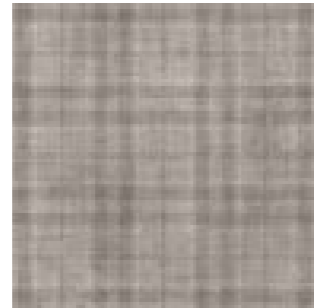
Mosaico Set Dress



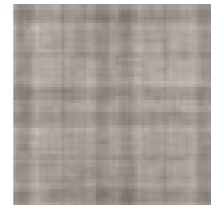
Set Tartan White 9090
90x90 - 36"x36"



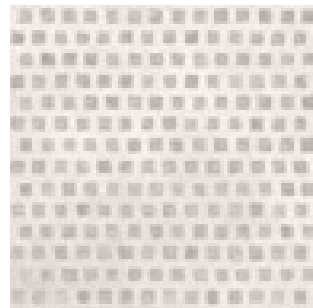
Set Tartan White 6060
60x60 - 24"x24"



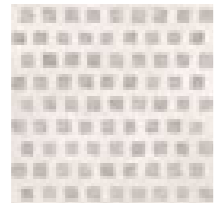
Set Tartan Grey 9090
90x90 - 36"x36"



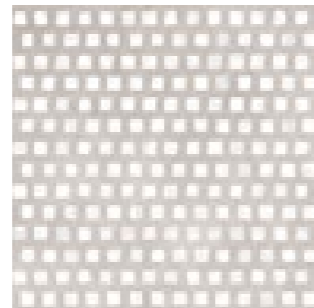
Set Tartan Grey 6060
60x60 - 24"x24"



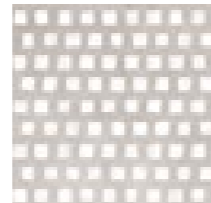
Set Gem White 9090
90x90 - 36"x36"



Set Gem White 6060
60x60 - 24"x24"



Set Gem Pearl 9090
90x90 - 36"x36"



Set Gem Pearl 6060
60x60 - 24"x24"



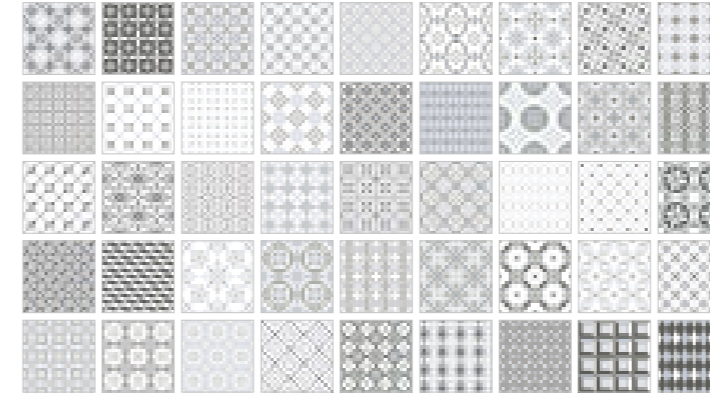
Metrowood Natural 9090
90x90 - 36"x36"



Set Wall White 1590
15x90 - 6"x36"



Ang. Set Wall White 1590
15x74 - 6"x30"



Metrosigns RET V4 4 R9 B.C.R. DCOF 10mm EN 14411 APPENDICE G Bla GL

La decorazione **Metrosigns** si compone di **45 varianti grafiche**.
The décor **Metrosigns** consists of **45 graphic variations**.
Die Dekoration **Metrosigns** umfasst **45 grafische Varianten**.
Metrosigns est composé par **45 décors différents**.
Декор **Metrosigns** включает в себя **45 графических вариантов**.

Metrosigns
20x20 - 8"x8"



ceramica
SANT'AGOSTINO

Via Statale, 247 - 44047 S. Agostino (FE) ITALY

T. +39 0532 844111

F. Italia + 39 0532 846113

F. Export + 39 0532 844209

info@ceramicasantagostino.it

www.ceramicasantagostino.it



#AgostinoLover