

HYDRAULIC

Collection

Kerlife
CERAMICAS

45X45 CM / 18"X18"
[PRE-CUT 22.5X22.5 CM / 9"X9"]

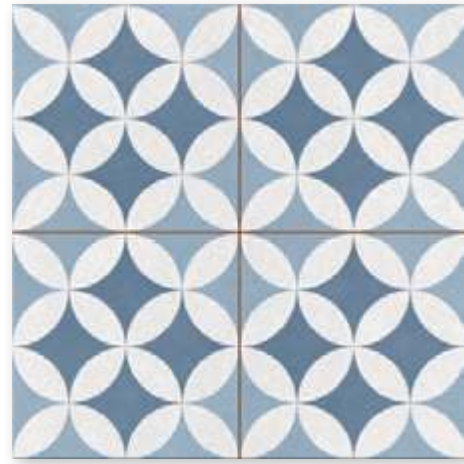
Floor Tile Matt Finish
R10 - DCOF: 0.72W



INDEX CONTENTS

HESTER	4
GRACE	6
OXFORD	8
WILLIAM	10
LYS	12
LEAH	14
ANDY	16
MERCHANDISING	18
TECHNICAL SECTION	19

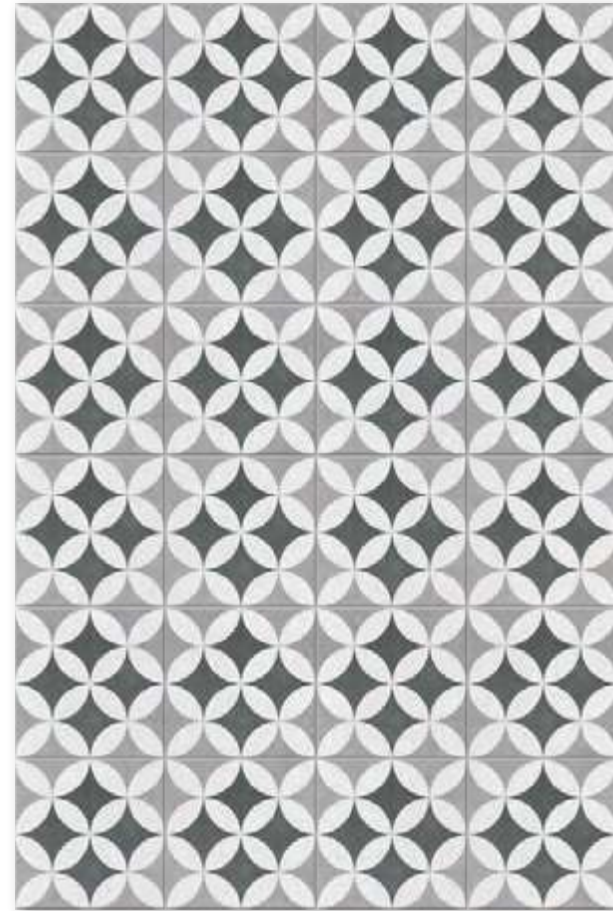
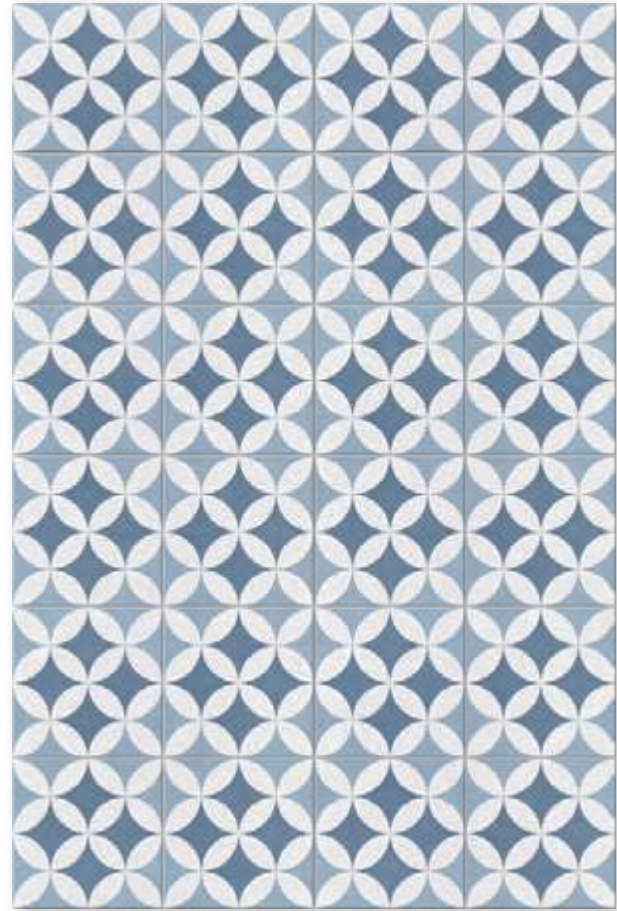
HESTER



HESTER **OCEAN** 45X45
[PRE-CUT 22.5X22.5 CM]



HESTER **SILVER** 45X45
[PRE-CUT 22.5X22.5 CM]



Red Body



Matt Finish (R10)



Pre-cut



Floor Tile



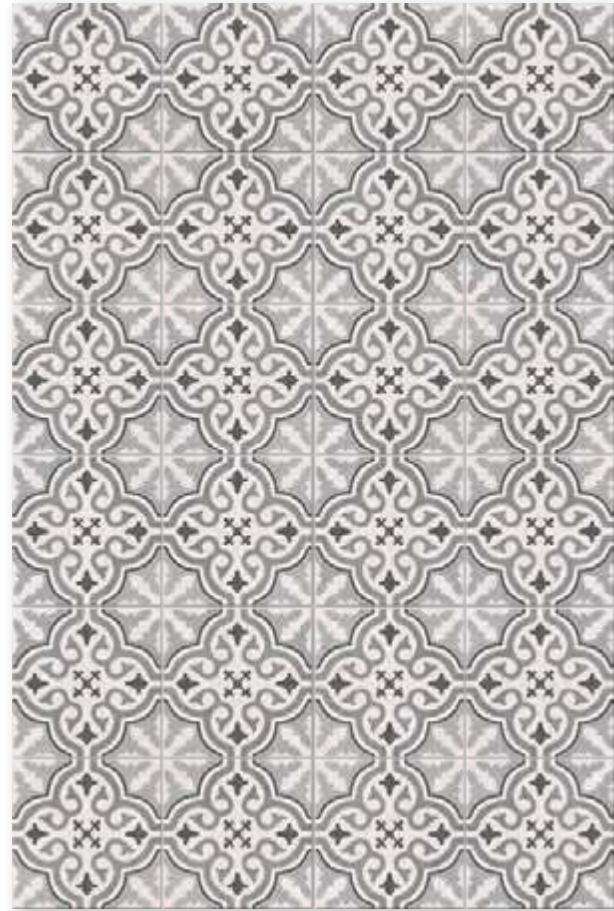
GRACE



GRACE **OCEAN** 45X45
[PRE-CUT 22.5X22.5 CM]



GRACE **SILVER** 45X45
[PRE-CUT 22.5X22.5 CM]



Red Body



Matt Finish (R10)



Pre-cut



Floor Tile



GRACE silver 45x45



GRACE **MIX** 45X45
[PRE-CUT 22.5X22.5 CM]



OXFORD



OXFORD MIX 45X45
[PRE-CUT 22.5X22.5 CM]



Red Body



Matt Finish (R10)



Pre-cut



Floor Tile



WILLIAM



WILLIAM OCEAN 45X45
[PRE-CUT 22.5X22.5 CM]



WILLIAM SILVER 45X45
[PRE-CUT 22.5X22.5 CM]



Red Body



Matt Finish (R10)



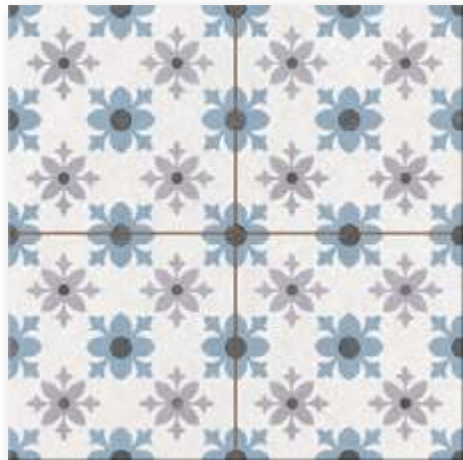
Pre-cut



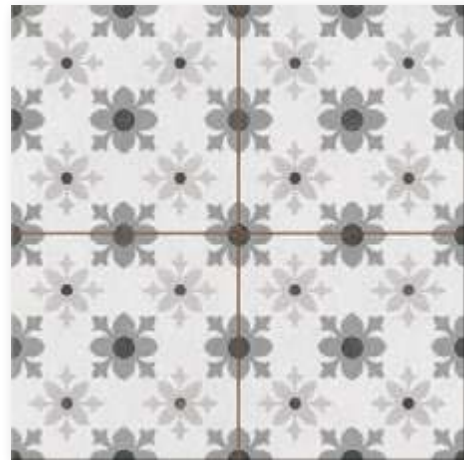
Floor Tile



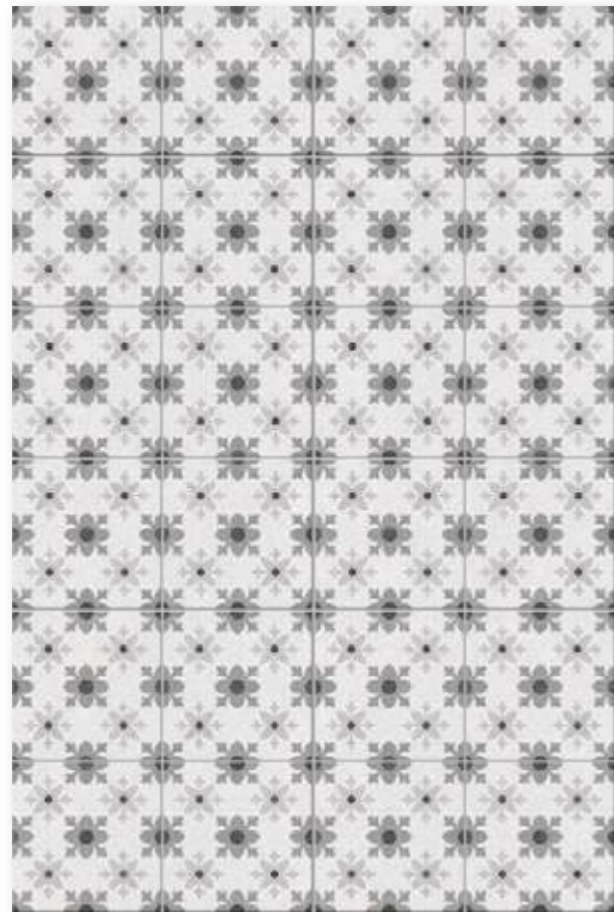
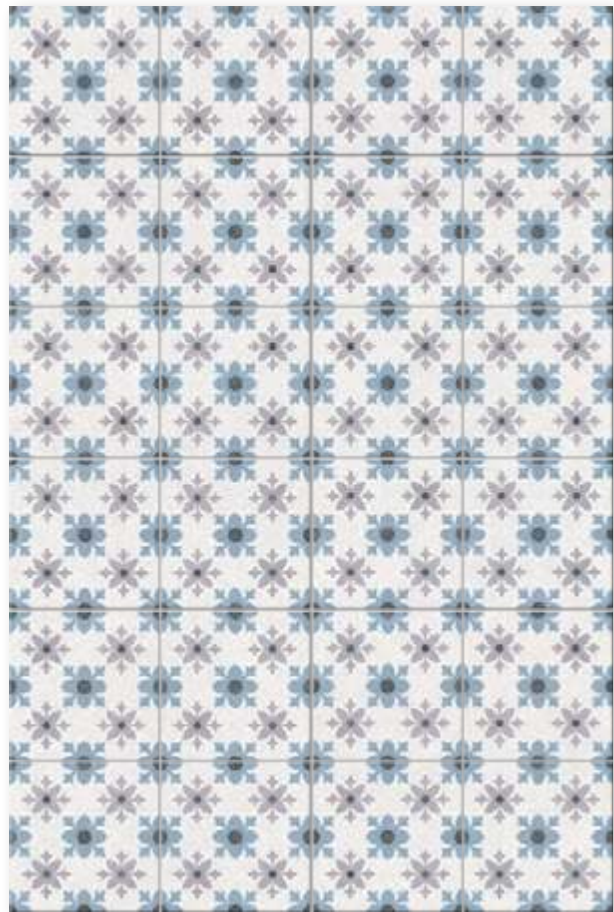
LYS



LYS OCEAN 45X45
[PRE-CUT 22.5X22.5 CM]



LYS SILVER 45X45
[PRE-CUT 22.5X22.5 CM]



Red Body



Matt Finish (R10)



Pre-cut



Floor Tile



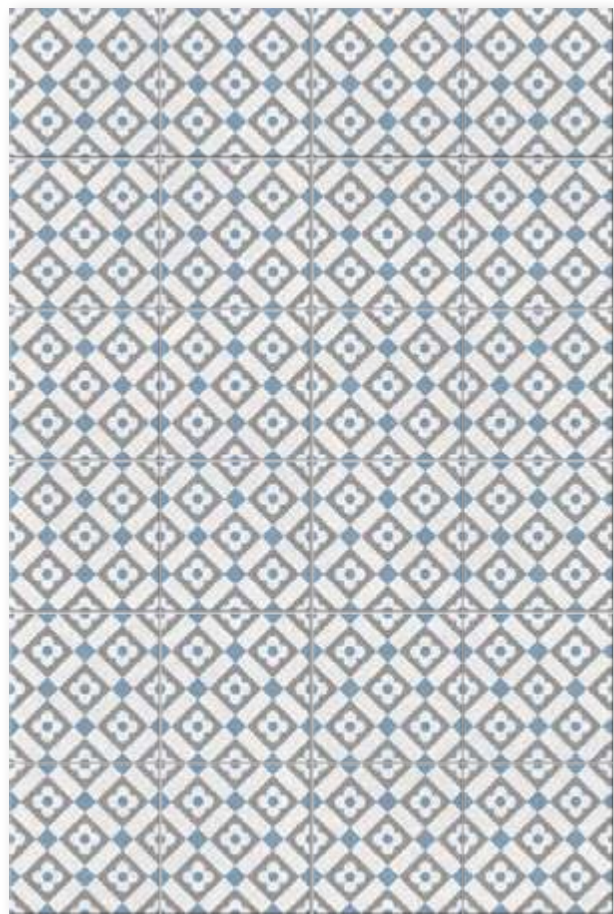
Kerlife

LYS silver 45x45

LEAH



LEAH OCEAN 45X45
[PRE-CUT 22.5X22.5 CM]



Red Body



Matt Finish (R10)



Pre-cut



Floor Tile



Kerlife
ceramics

ANDY

9 different graphics packaged randomly



ANDY MIX 45X45
[PRE-CUT 22.5X22.5 CM]



Red Body



Matt Finish (R10)



Pre-cut



Floor Tile



EXHIBITOR - MERCHANDISING



Capacity: 12 pieces

Width: 500mm / 20"
Length: 600mm / 24"
Height: 1055mm / 42"

TECHNICAL SECTION

TECHNICAL SHEET

Highly interesting: Technical specifications are only valid for those products classified as first choice.

Body Technical Specifications		TEST METHOD	Standard Value	Test Result
	Length and Width	ISO 10545-2 / ASTM C499	+/- 0.6%	Pass
	Thickness	ISO 10545-2 / ASTM C499	+/- 5%	Pass
	Straightness of sides	ISO 1 0545-2 / ASTM C485	+/- 0.5%	Pass
	Surface Planarity	ISO 10545-2 / ASTM C485	+/- 0.5%	Pass
	Squareness/Rectangularity	ISO 10545-2 / ASTM C502	+/- 0.6%	Pass
	Water Absorption	ISO 10545-3 / ASTM C373	3% < E < 6%	4% < E < 4.5%
	Bending Strength	ISO 10545-4 / ASTM C648	R ≥ 22 N/mm ²	R ≥ 24 N/mm ²
	Modulus of Rupture	ISO 10545-4 / ASTM C482	S ≥ 1100 N	S = 1200 N
	Frost Resistance	ISO 10545-12 / ASTM C1026	Resist	Pass
	Linear Thermal Expansion Coefficient	ISO 10545-8 / ASTM C372	9*10 ⁻⁶ K ⁻¹ max	Pass
	Thermal Shock Resistance	ISO 10545-9	Resist	Pass
Technical Specifications of Surface		TEST METHOD	Standard Value	Standard Value
	Slipperiness	UNE-ENV-12633	CTE	Class 2
		BS 7976-2: 2002	PTV	LOW (40)
		AS/NZS 4586: 2013	Pendulum SRV	P3
		DIN 51130:2014	Inclined plane	R10
		ANSI A137.1:2012	≥ 0.42W	0.72W
	Surface Abrasion Resistance (PEI)	ISO 10545-7	not required	IV
	Surface Hardness (MOHS Scale)	UNE 67-101	not required	8
	Acids and Alkalis Resistance	ISO 10545-13 / ASTM C650	GLA / GLA	Pass
	Staining Resistance	ISO 10545-14 / ASTM C650	≥ 3	4
	Crazing Resistance	ISO 10545-11	Resist	Pass
	Surface Quality	ISO 10545-2	≥ 95%	Pass

PACKING LIST

SIZE	BOX			EUROPALLET		
	PCS	M2 / SQFT	KG	BOXES	M2 / SQFT	KG / lb
45x45x1 CM / 18"x18"x0.4"	5	1.00 / 10.76	20.00	66	66.00 / 710.42	1340.00 / 2954.19

FITTING RECOMMENDATIONS

You should always read the manufacturer’s recommendations and the data sheets for all of the products and materials you use. It is important to have qualified professional tilers carry out the work to ensure each project is performed with the necessary quality and best end result in terms of technical features and appearance.

Select the right type of tile for the project based on the technical and functional requirements of the surface to be tiled. The manufacturer states what each tile is intended to be used for based on its characteristics. Take the following into account when selecting the tile: mechanical requirements, slip resistance, frost resistance, chemical resistance and dimensional characteristics.

After you have selected the right tile for each project, examine the base it will be fitted to and select the adhesive and grout. All of these criteria together will determine the most appropriate tiling technique for each project.

It is very important to adhere to adequate setting times and to allow enough time for the surfaces to cure so they can properly bear the loads and prevent possible stress and structural movement that could be transmitted to the outer layers.

INSTALLATION JOINTS. A physical separation between adjoining tiles required of 1mm/0.04” to offset sizing deviations in ceramic tiles and to absorb stress and disperse vapour from strata beneath. All ceramic tiling must be designed with installation joints suited to the characteristics of the tiles.

KER LIFE CERAMICAS S.L. reserves the right to modify and/or discontinue certain models listed in this catalog without notice. Due to the printing process colors shown in this catalog should be considered approximate; they may vary slightly from the original. The total or partial reproduction of this catalog (photographs, text, illustrations, designs, graphic representations, etc.) without the express authorization of KER LIFE CERAMICAS S.L. is forbidden.

KerLife Cerámicas

Ctra.Onda-Villarreal km. 2
12200 Onda (Castellón) Spain
Tel. +34 964 104 140
www.kerlife.com
kerlife@kerlife.com