

RIVIERA

15x30 · 6"x12"



The Workshop
FACTORY



INTERIOR
INSIDE



BAÑO
BATHROOM



COCINA
KITCHEN



ESPACIO PÚBLICO
PUBLIC SPACE

MAINZU
cerámica



Riviera Café 15x30 · 6"x12" · Antibes 15x30 · 6"x12"
Sand Bali Stone 20x20 · 8"x8" (Ver serie completa en / Check complete serie in PORCELAIN BOOK COLLECTIONS 2022 OPTYM)



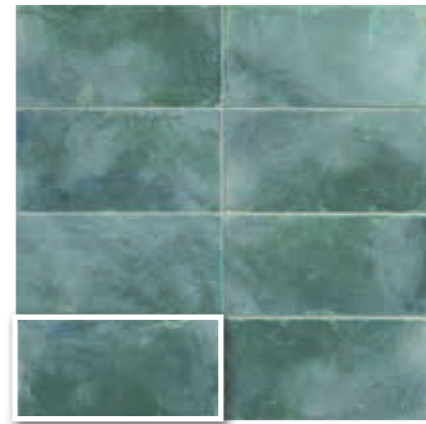
Marsella 15x30 · 6"x12" · Riviera Blanc 15x30 · 6"x12"
Bottega Terra 20x20 · 8"x8" (Ver serie completa en / Check complete serie in www.mainzu.com)

15x30 · 6"x12"

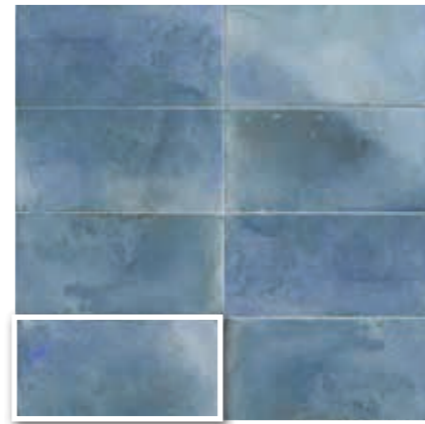
15x30 · 6"x12"



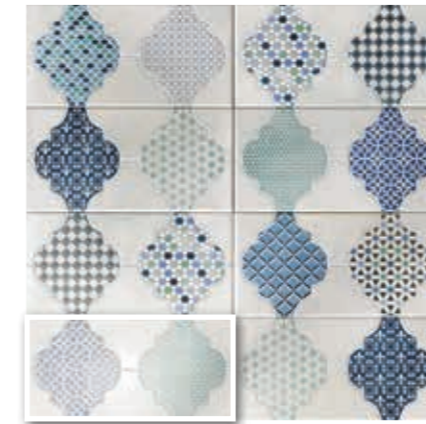
RIVIERA BLANC
15x30 (M 190) 6"x12"



RIVIERA TURQUOISE
15x30 (M 190) 6"x12"



RIVIERA BLEU
15x30 (M 190) 6"x12"



CASSIS
15x30 (M 220) 6"x12"



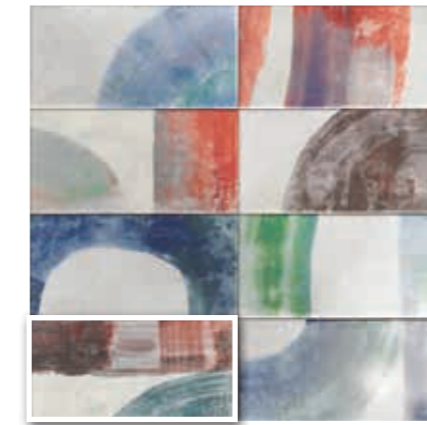
ANTIBES
15x30 (M 220) 6"x12"



MARSELLA
15x30 (M 220) 6"x12"



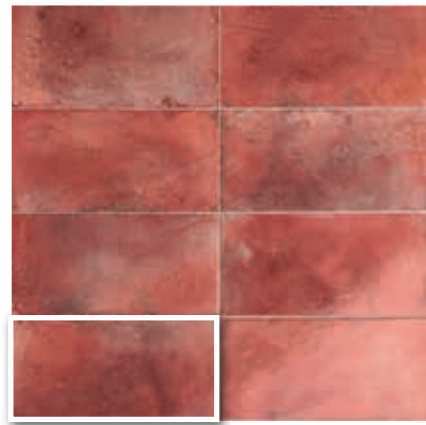
TOLON
15x30 (M 220) 6"x12"



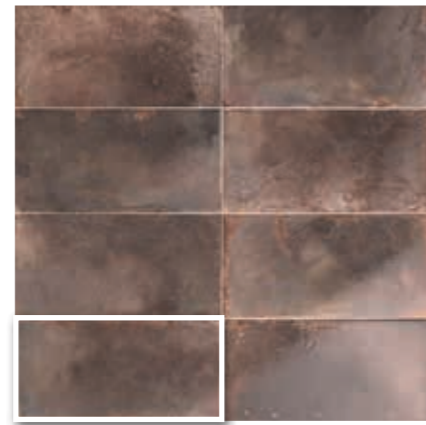
CANNES
15x30 (M 220) 6"x12"



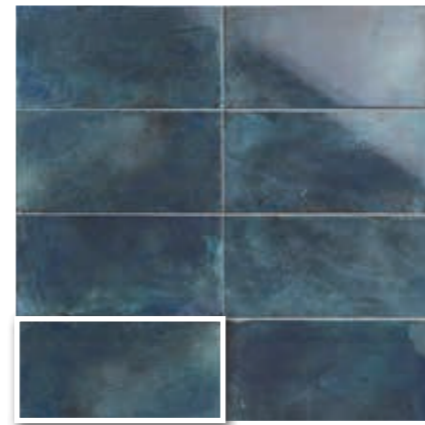
Riviera Rouge 15x30 · 6"x12" · Cannes 15x30 · 6"x12"
Bottega Bianco 20x20 · 8"x8"



RIVIERA ROUGE
15x30 (M 190) 6"x12"



RIVIERA CAFÉ
15x30 (M 190) 6"x12"



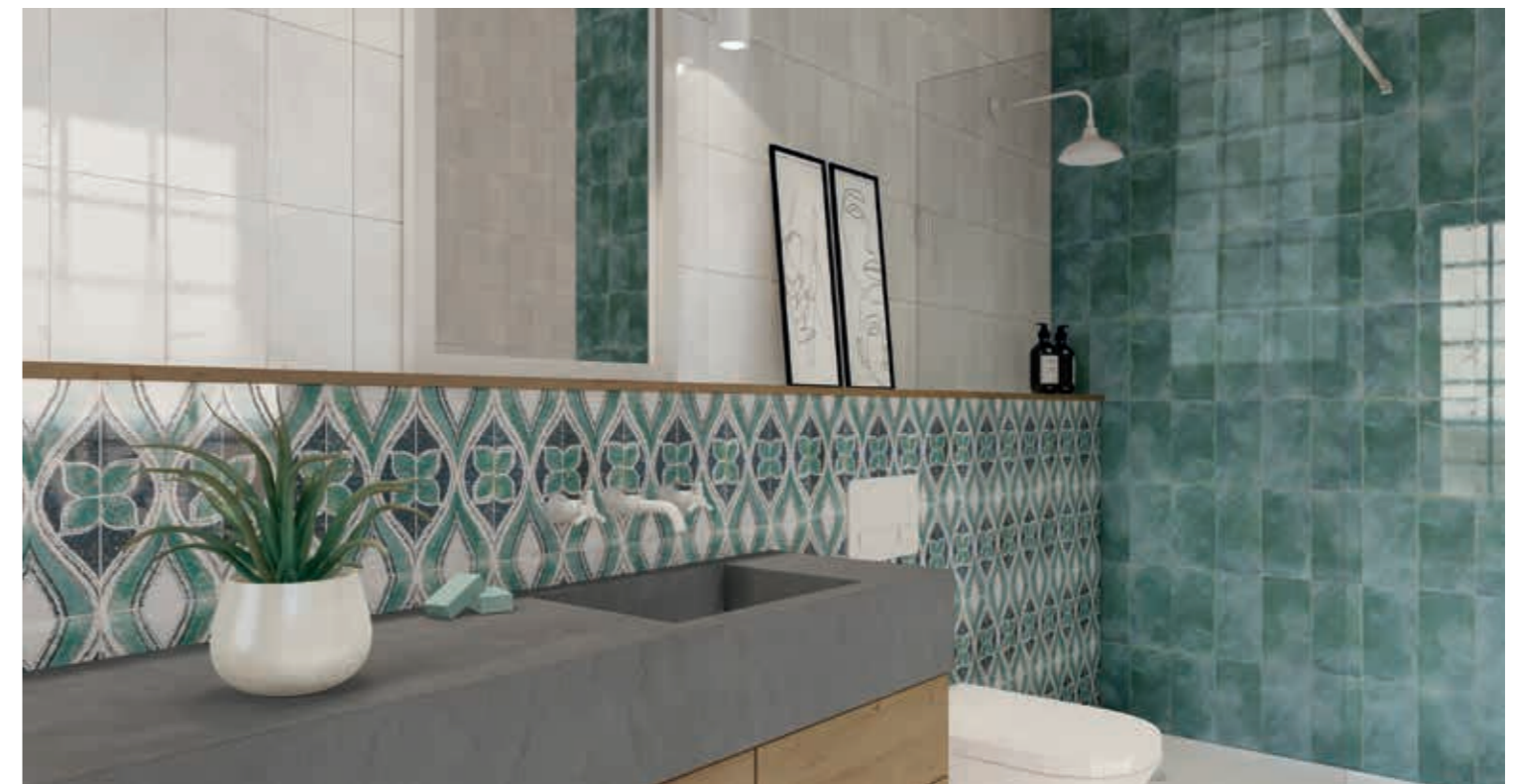
RIVIERA MARINE
15x30 (M 190) 6"x12"

15x30 6"x12"

15x30 6"x12"



Cassis 15x30 · 6"x12" · Riviera Marine 15x30 · 6"x12" · Scudo Azurro 20x20 · 8"x8"



Riviera Blanc 15x30 · 6"x12" · Riviera Turquoise 15x30 · 6"x12" · Tolon 15x30 · 6"x12"

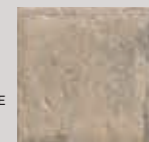
PAVIMENTO SUGERIDO
RECOMMENDED FLOOR TILE

OPTYM PORCELAIN TILE MATE / MATT R10 CLASE II

NORLAND



NORLAND WHITE
20x20 · 8"x8"
(M 280)

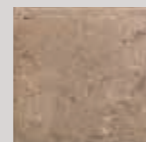


NORLAND BEIGE
20x20 · 8"x8"
(M 280)

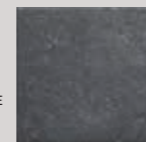


NORLAND GREY
20x20 · 8"x8"
(M 280)

BALI STONE



SAND BALI STONE
20x20 · 8"x8"
(M 280)



LAVA BALI STONE
20x20 · 8"x8"
(M 280)

Ver serie completa en / Check complete serie in:
PORCELAIN BOOK COLLECTIONS 2022 OPTYM

| MEDIDAS | PIEZAS / CAJA | PIEZAS / M ² | M ² / CAJA | CAJA / PALLET | PESO / M ² | PESO / PIEZA | PESO / CAJA | M ² / PALLET | PESO / PALLET | VENTA |
|--------------------|---------------|-------------------------|-----------------------|---------------|-----------------------|--------------|-------------|-------------------------|---------------|----------------|
| 15 x 30 · 6" x 12" | 22 | 22 | 1 | 80 | 13,85 | 0,63 | 13,85 | 80 | 1,107 | M ² |