

Rigo

PROGETTO ITALIANO
41
zero
42

RIGO
FIGURES
1FINISH/NATURAL
1SIZE/5,5X35,5CM-2"X14"
4COLORS/WHITE/GREY/MUD/BLACK
THE CONTEMPORARY CHARM OF WOOD'S IMPERFECTIONS

PROGETTO ITALIANO
41
zero
42

41zero42 è una storia giovane, aperta al futuro. E' un collettivo italiano di professionalità, che insegue il concetto di bello basato sull'eccellenza delle performances, attenta nel cercare un equilibrio tra ricerca, innovazione, tendenze e mercato. Diretta da un team di giovani manager che si muove a livello internazionale per affrontare nuove sfide e possibilità.

Le idee e l'approccio sono liberi dalle logiche passate che hanno sin qui orientato le collezioni ceramiche.

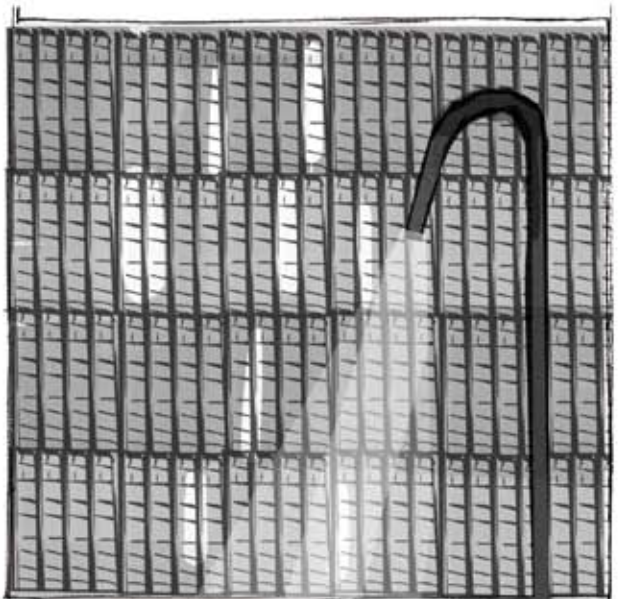
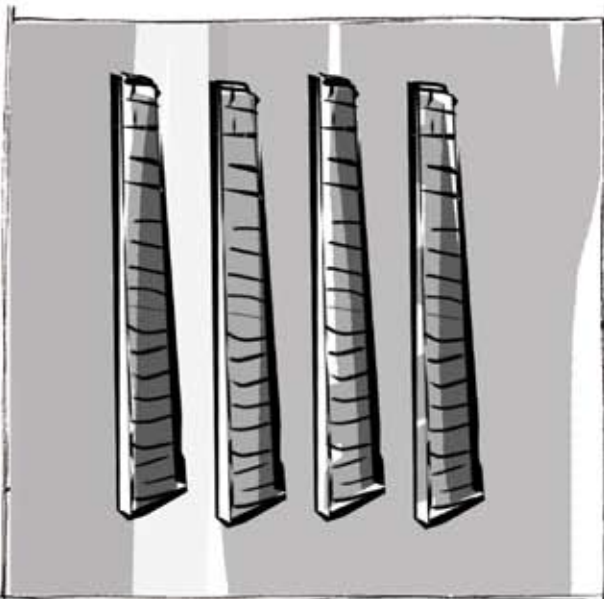
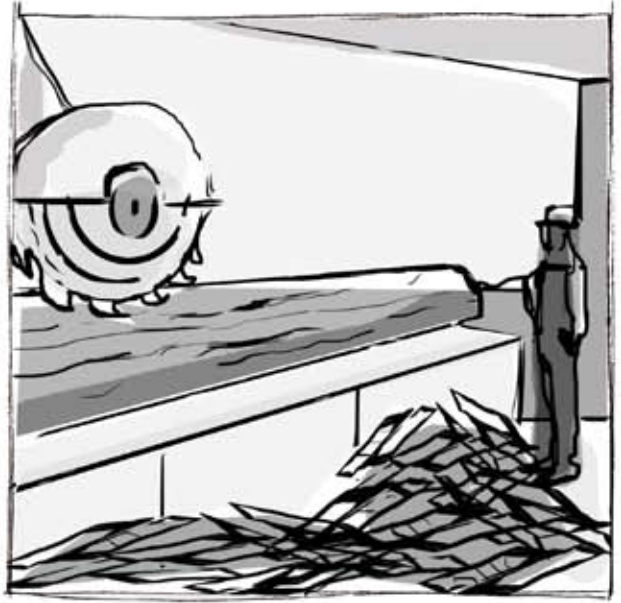
Negli ultimi anni il mondo ceramico si è evoluto e trasformato.

Ricerca e tecnologia hanno favorito una nuova dimensione alle piastrelle, prima ignorate dai progettisti e considerate solamente quale alternativa economica dei prodotti nobili, sono oggi considerate in molti casi, una opzione primaria da valutare nella offerta tra legni, pietre, malte e altri prodotti da pavimentazione e rivestimento.

La fusione tra: tecnologia, resa estetica, performances, praticità di utilizzo, ricerca, innovazione e made in italy sono la mission di **41zero42**.

41zero42 is a young project open to the future; an Italian team of professionals that focuses on the concept of beauty based on the excellence of performances, bearing in mind an even balance between research, innovation, trends and market demands. The enterprise is directed by a team of young managers who work internationally to face new challenges and potentials. The ideas and the approach are free from past logics that have conditioned the ceramic tile.

The world of ceramic tiles has evolved and changed over recent years. Research and technology have renewed tiles, which in the past were ignored by designers and were considered just an economic alternative to more noble products, but which are now considered a primary option in many cases, to be taken into consideration among the offers of wood, stone and mortar and other floor and tile products. The merging of technology, appearance, performance, practical use, research, innovation and "made in Italy" is the mission of **41zero42**.



L'eleganza della semplicità.

Un processo di rivalorizzazione e recupero di piccole porzioni di legno, scartate durante le lavorazioni principali.

Si esaltano così, in questo modo, le molteplici venature, di questo materiale: una marea di linee impercettibili disposte in una trama sottile e avviluppata, precedentemente nascosta alla vista del più attento osservatore.

Rigo diviene la nostra riproposizione in materia ceramica della pura essenza lignea.

In 4 colorazioni: Black, White, Grey e Mud su un supporto tutta massa, per rendere protagonista solo la materia e la sua lavorazione.

The elegance in simplicity.

A process of upgrading and recycling of small portions of wood initially discarded.

This is how the veins are enhanced, by the multiple cuts of this material: a tide of imperceptible lines arranged on a thin texture previously hidden, only to be noticed by the sight of the most careful observer.

Rigo becomes our proposal in ceramic material of pure wood essence.

In 4 colors: Black, White, Grey and Mud on a full body, to make only material and its processing the real protagonist.





Rigo White







Rigo Grey



NOTES

NOTES



HOLDER M-167-CA-X

CRYPTOGRAPHIC ABC'S

ARTICLE VI - The Shifted Substitution Cipher
Another of the Polybius ciphers - though not belonging to the Vigenere Family - is the Shifted Substitution, which employs numbers to represent letters. The numbers are derived from a 25 square, known as the Polybius Square, and some attention is forthcoming in order to account for the entire alphabet of 26 letters in a block of but 25 cells. It is general assumed; but occasionally it is found that Q & V would be, with digits assigned across the top and down the left side.

1 2 3 4 5
6 7 8 9 10
11 12 13 14 15
16 17 18 19 20
21 22 23 24 25

Thus A is represented by 11; I by 21; and T by 44. However, all Polybius squares are not normally eight to explain this (there are well, which may also apply to other types of ciphers.

When the "keyword alphabet" is used, it means that the normal alphabet sequence has been disrupted in some manner. The commonest way of doing this is to choose a keyword, with or without repeated letters, jot it down and then add the remaining letters of the alphabet which have been unused. For example, suppose the keyword: DRILLING OF EDIFICE is selected, repeated letters are omitted, and the remaining letters D R I L L I N G O F E D I F I C E are added, now, this new or "keyword" alphabet is set up as a Polybius square thus:

D R I L L
E D F O G
H A B C K
M N P Q R

If, for some reason, a further mixed alphabet is required, a process known as a transposition block is employed. Take for example, the keyword BLACKBIRD which is set up, as follows:

B L A C K B I R D
E F O G H I J
K L M N O P Q R S

and the resulting alphabet is taken off in columns from 1 up to produce B O V L E F A C D Y K H S R D M P I G T B U.

The Polybius square then would be:
B O V L E F A C D Y K H S R D M P I G T B U
and it would still have the 1 2 2 5 5 at the top and at the side.

Using a normal or standard square, and using TEXT for the keyword as before, set with the same square text, select from the square the digits which





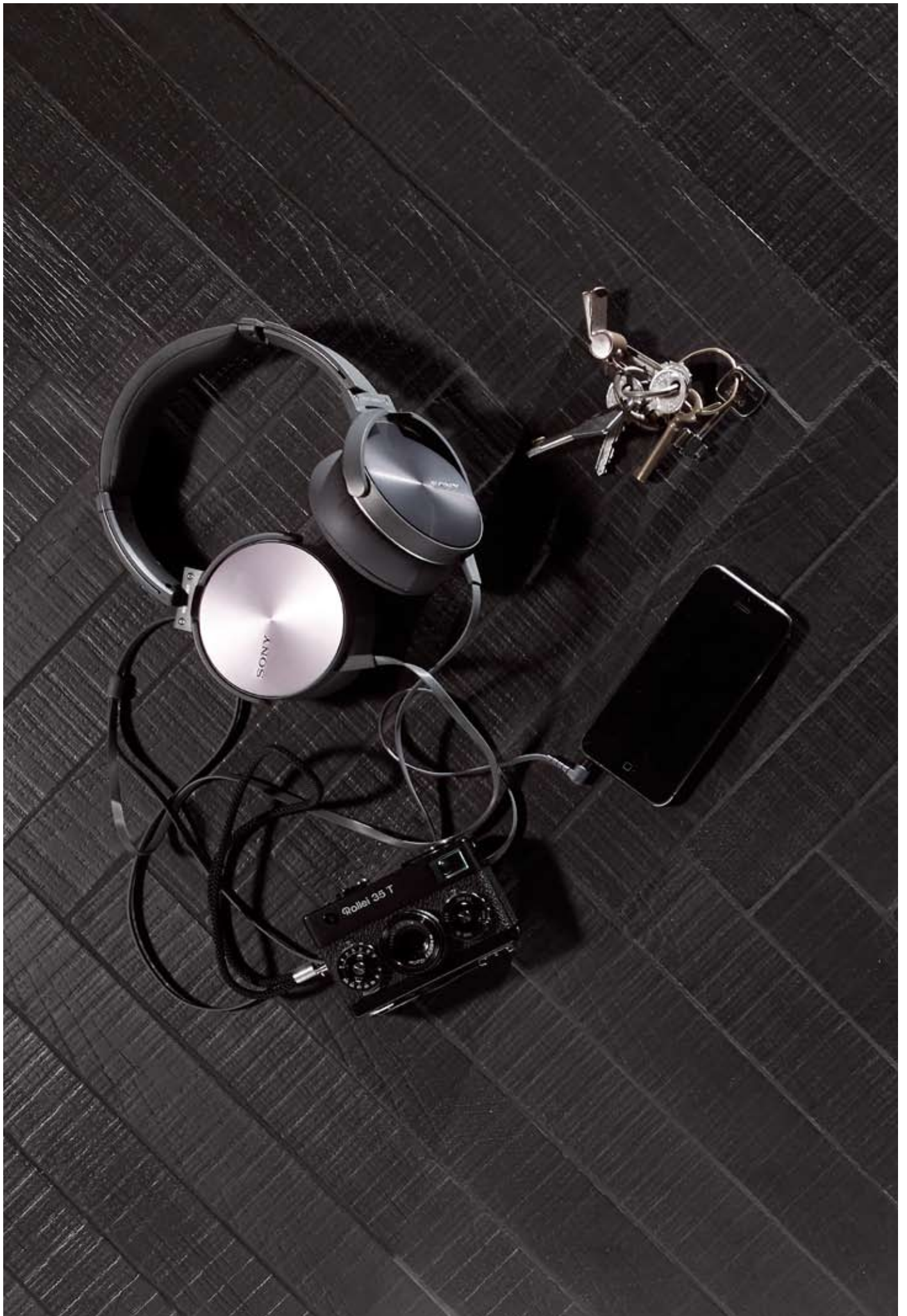
Rigo Mud



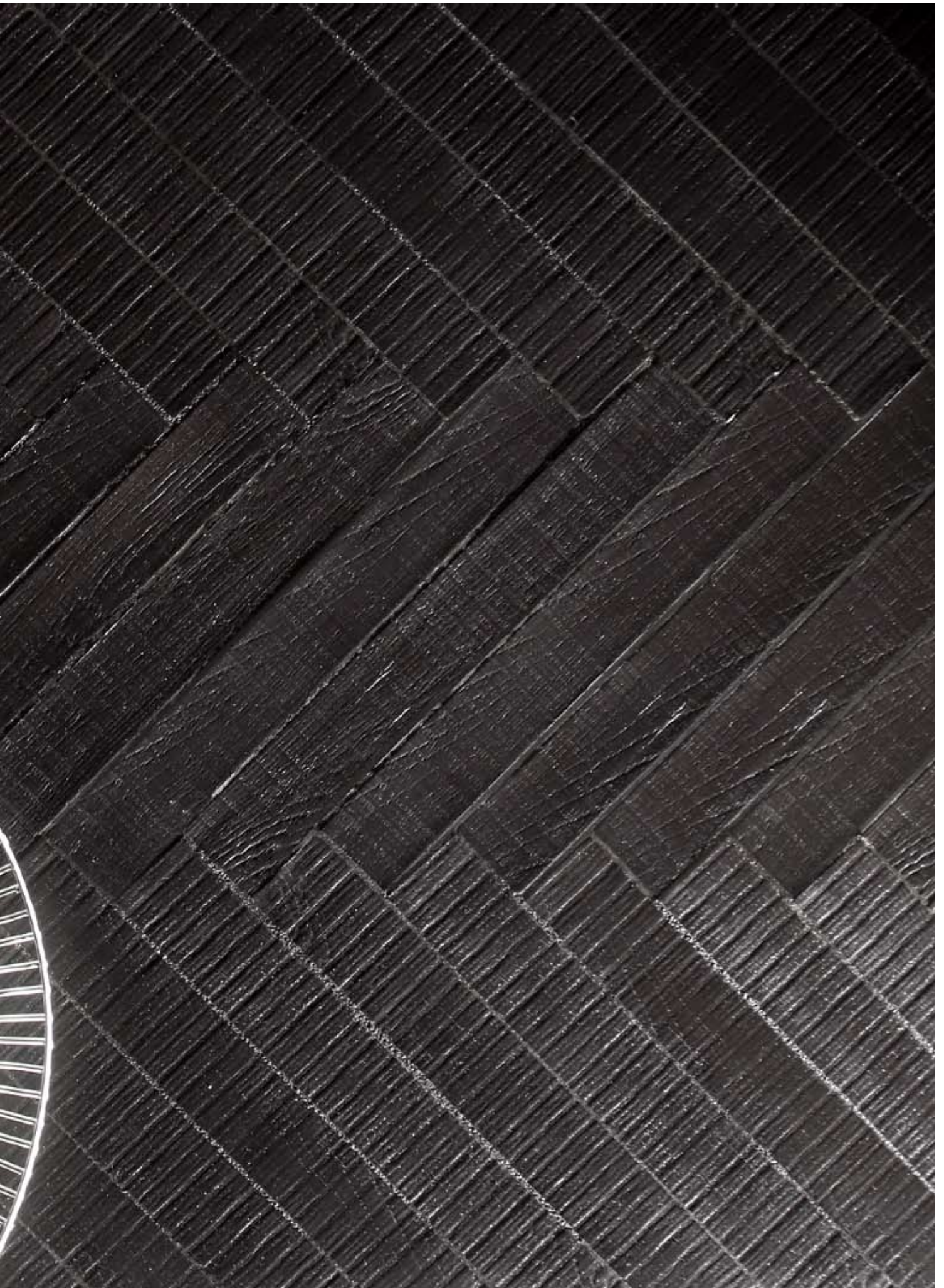




Rigo Black







INFO TECH >

SERIES **RIGO**

TECHNOLOGY **FULL BODY EXTRUDED PORCELAIN (UGL)**

FINISH **NATURAL**

FEATURES **SLIGHT SHADE AND CALIBER VARIATIONS ARE AN INTRINSIC PROPERTY OF THIS ARTISAN PORCELAIN**

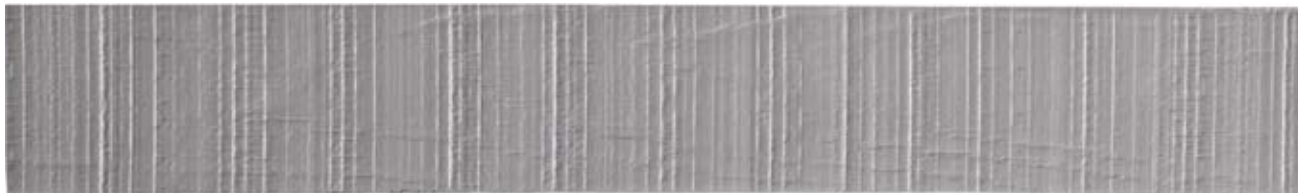
SIZE **5,5X35,5CM/2"X14"**

THICKNESS **8mm**

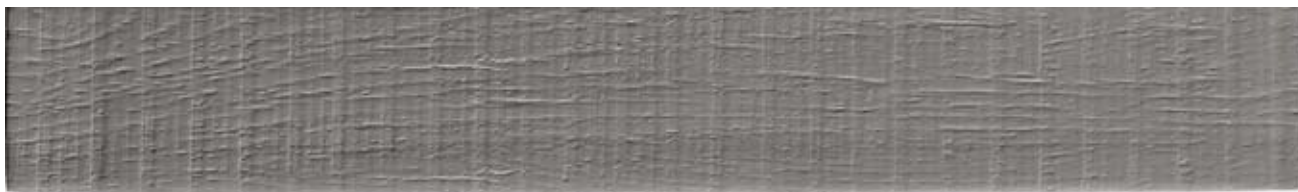
CODE/COLORS



4100233 Rigo White



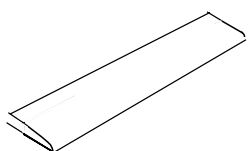
4100234 Rigo Grey



4100235 Rigo Mud



4100236 Rigo Black



5,5x36cm ^{2"x14"} Pezzo speciale a becco di civetta disponibile su qualsiasi dei quattro lati, su ordinazione speciale.

5,5x36cm ^{2"x14"} Finishing bullnose piece available on any of the four edge on a special order basis.

Rigo	pcs	m ²	kg/box	Box/pal	m ² /pal	kg/pal
Field Tile	52	0,923	16,28	40	36,92	651,2

Raccomandiamo di stuccare in tinta al materiale

MADE IN ITALY 

The manufacturer recommends using a grout joint of a matching color.



NORMA STANDARD	CARATTERISTICHE FEATURES	VALORE PRESCRITTO VALUE REQUIRED	RIGO
ISO 10545/2	DIMENSIONI - SIZE lunghezza e larghezza - length and width spessore - thickness rettilinearità degli spigoli - straightness of edges ortogonalità - wedging planarità - flatness	± 2 % ± 10 % ± 0,6 % ± 1 % ± 1,5 %	± 2 % ± 10 % ± 0,6 % ± 1 % ± 1,5 %
ISO 10545/3	assorbimento d'acqua water absorption	<0,5 %	0,3 %
ISO 10545/9	resistenza agli sbalzi termici thermal shock	nessuna alterazione visibile no visible alteration	resiste resistant
ISO 10545/12	resistenza al gelo frost/freeze resistance	nessuna alterazione visibile no visible alteration	resiste resistant
ISO 10545/13	resistenza agli attacchi chimici chemical resistance	nessuna alterazione visibile no visible alteration	resiste resistant
ISO 10545/4	resistenza alla flessione breaking strength	≥ 28 N/ mm ²	30 N/ mm ²
ISO 10545/6	Resistenza all'abrasione profonda resistance to deep abrasion	< 275 mm ³	< 165 mm ³
ISO 10545/14	resistenza alle macchie stain resistance	≥ CLASSE 3	4
DIN 51130	scivolosità anti-slip		R10



NORMA STANDARD	CARATTERISTICHE FEATURES	VALORE PRESCRITTO VALUE REQUIRED	RIGO
ISO 10545/2	DIMENSIONI - SIZE lunghezza e larghezza - length and width spessore - thickness rettilinearità degli spigoli - straightness of edges ortogonalità - wedging planarità - flatness	± 2 % ± 10 % ± 0,6 % ± 1 % ± 1,5 %	± 2 % ± 10 % ± 0,6 % ± 1 % ± 1,5 %
ASTM C373	water absorption	<0,5 %	0,3 %
ASTM C484	thermal shock	unaffected	unaffected
ASTM C1026	frost/freeze resistance	unaffected	unaffected
ASTM C650	chemical resistance		unaffected
DCOF	dynamic coefficient of friction	> 0,42	0,69
ASTM C1243	Resistance to deep abrasion of unglazed tiles	< 175 mm ³ (0,011 in ³)	< 165 mm ³
ASTM C1378	stain resistance	≥ CLASSE 3	5
ANSI A137.1	aesthetic classes	V0-V4	V3

UGL



AVVERTENZE

RIGO è prodotta per estrusione in modo totalmente artigianale, pertanto differenze superficiali, di tono o di calibro sono da considerarsi caratteristiche proprie del materiale..

ISTRUZIONI DI POSA

- 1 POSARE IL MATERIALE UTILIZZANDO APPOSITI COLLANTI PER CERAMICA.
- 2 TRATTANDOSI DI MATERIALE TRAFILATO DI FORMA NON REGOLARE, SISTEMARE LE FUGHE CON APPOSITI DISTANZIATORI (CUNEI)
- 3 STUCCARE TONO SU TONO
- 4 LISCIARE LE FUGHE CON UNA SPUGNA

Per nessun motivo saranno accolte contestazioni su materiale posato per danni visibili prima della posa.

I colori e le caratteristiche estetiche dei materiali illustrati nel presente catalogo sono da ritenersi puramente indicativi.

Le tabelle con i dati riferiti ai contenuti per scatole ed ai pesi degli imballi sono aggiornate al momento della stampa del catalogo, pertanto i dati elencati possono subire variazioni.

Il nostro personale di vendita è a vostra disposizione per dettagli e chiarimenti sui nostri prodotti.

ADVICE

RIGO is an extruded and handmade product; therefore any surface difference or any diversity in shade and caliber should be considered as peculiar of the product.

LAYING INSTRUCTIONS

- 1 LAY THE TILES USING A GLUE FOR CERAMIC TILES/PORCELAIN STONEWARE
- 2 BEING THE TILES AN EXTRUDED PRODUCT WITH IRREGULAR EDGES, FIX THE JOINTS USING THE APPROPRIATE SPACERS (WEDGE)
- 3 PLASTER THE JOINTS USING A MATCHING GROUT
- 4 LEVEL THE JOINTS USING A SPONGE

Claims on items which have already been laid won't be accepted, for any reason for any damage visible before laying .

41zero42 reserves the right to modify the mentioned products without notice, declining all responsibility on direct or indirect damages caused by eventual modification.

Colours and aesthetical features of the materials as illustrated in this catalogue are to be regarded as mere indications.

The tables containing the details of the content per box and the weight of packing are updated at the time the catalogue is printed; therefore the listed data may change.

Our sales department is at your disposal for any question you may have concerning our products.



**MADE
IN
ITALY**

CREDITS

ILLUSTRATION Ottavia Bruno // www.ottaviabrunoillustrator.com/
GRAPHIC PROJECT 41zero42

Printed in italy
Aprile 2014

PROGETTO ITALIANO

**41
zero
42**

41zero42 srl

Via Monte Mongigatto 24 int.11,
41042 Fiorano Modenese (MO) Italy

Tel +39 0536 839350 Fax +39 0536 839360

info@41zero42.it

www.41zero42.it